

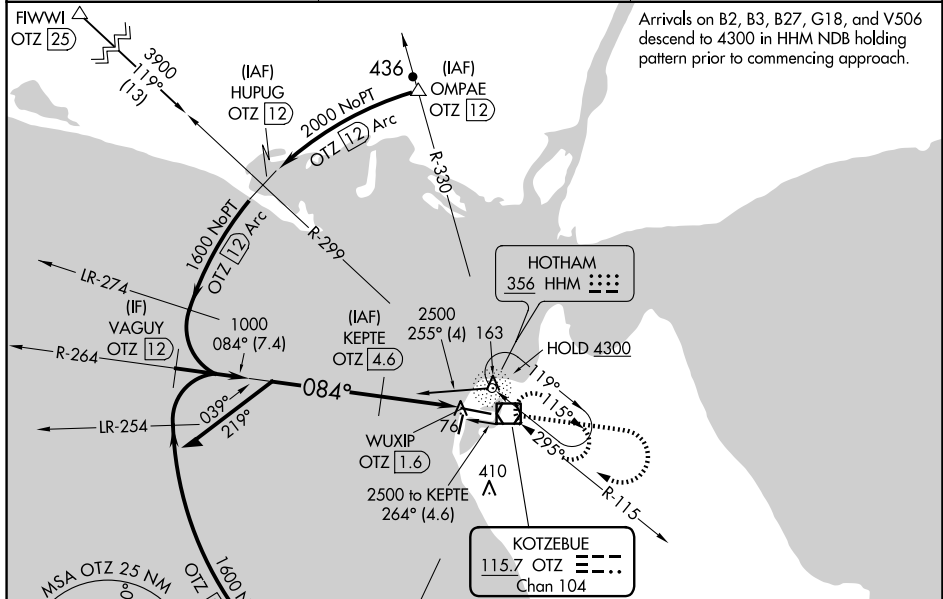
VOR/DME OTZ 115.7 Chan 104	APP CRS 084°	Rwy ldg 5900 TDZE 13 Apt Elev 15
--	------------------------	--

VOR RWY 9

RALPH WIEN MEML (OTZ) (PAOT)

DME required.	MISSED APPROACH: Climb to 1500 then climbing right turn to 2000 direct OTZ VOR/DME and hold, continue climb-in-hold to 2000.
<p>⚠ Circling Rwy 18, 36 NA at night, Circling Rwy 27 at night, operational VGSI required, remain on or above VGSI glidepath until threshold. Rwy 9 helicopter visibility reduction below RVR 4000 NA.</p>	

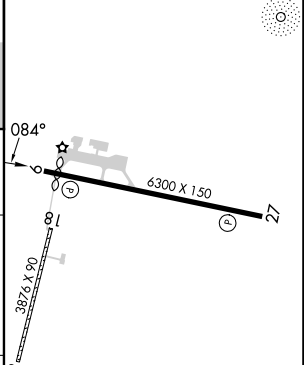
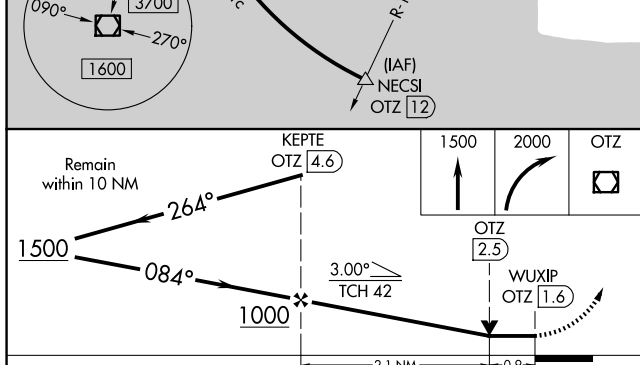
AFIS 135.45	ANCHORAGE CENTER 119.2 263.0	KOTZEBUE RADIO 123.6 (CTAF) 0
-----------------------	--	--



AK, 20 FEB 2025 to 17 APR 2025

AK, 20 FEB 2025 to 17 APR 2025

ELEV 15	TDZE 13
---------	---------



CATEGORY	A	B	C	D
S-9	340/55 327 (400-1)		340/50 327 (400-1)	
C CIRCLING	520-1 505 (600-1)		720-2 705 (800-2)	720-2 1/4 705 (800-2 1/4)

REIL Rws 9 and 27 **0**
HIRL Rwy 9-27 **0**
MIRL Rwy 18-36 **0**