

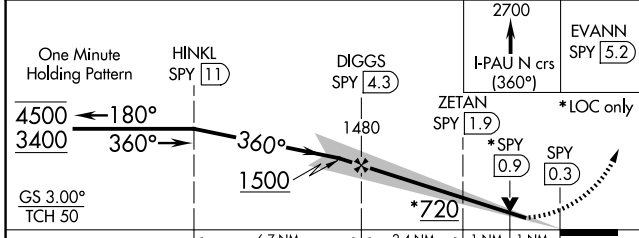
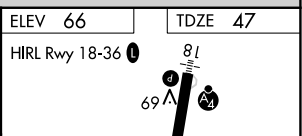
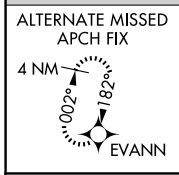
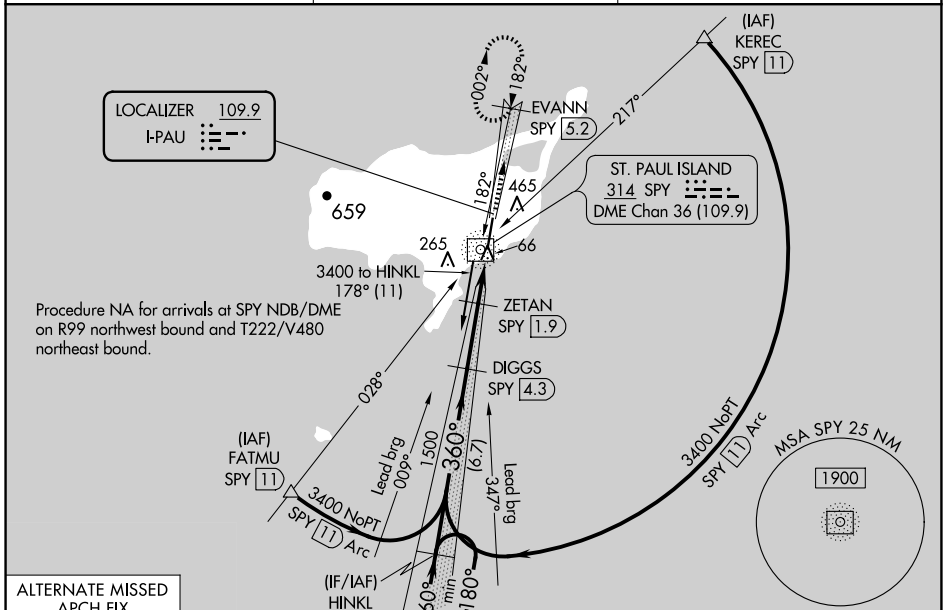
LOC I-PAU 109.9	APP CRS 360°	Rwy ldg TDZE Apt Elev	6500 47 66
---------------------------	------------------------	-----------------------------	---------------------------------------

ILS or LOC RWY 36

ST PAUL ISLAND (SNP)(PASN)

ADF and DME required for procedure entry. DME required.	MALSF	MISSED APPROACH: Climb to 2700 on I-PAU north course (360°) to EVANN/SPY 5.2 DME and hold, continue climb-in-hold to 2700.
<p>V Circling NA west of Rwy 18-36. Inop table does not apply to S-ILS.</p> <p>A When local altimeter setting not received, procedure NA. DME from SPY NDB/DME. Simultaneous reception of I-PAU and SPY DME required.</p>		

ASOS 135.75	ANCHORAGE CENTER 119.1 339.8	CTAF 122.3
-----------------------	--	----------------------



CATEGORY	A	B	C	D
S-ILS 36		247- ³ / ₄	200 (200- ³ / ₄)	
S-LOC 36		380- ³ / ₄	333 (400- ³ / ₄)	
C CIRCLING	800-1 734 (800-1)		800-2 734 (800-2)	800-2 ¹ / ₄ 734 (800-2 ¹ / ₄)

ELEV 66	TDZE 47												
HIRL Rwy 18-36													
<table border="1"> <tr> <td>Knots</td> <td>60</td> <td>90</td> <td>120</td> <td>150</td> <td>180</td> </tr> <tr> <td>Min:Sec</td> <td>4:24</td> <td>2:56</td> <td>2:12</td> <td>1:46</td> <td>1:28</td> </tr> </table>		Knots	60	90	120	150	180	Min:Sec	4:24	2:56	2:12	1:46	1:28
Knots	60	90	120	150	180								
Min:Sec	4:24	2:56	2:12	1:46	1:28								

AK, 20 FEB 2025 to 17 APR 2025

AK, 20 FEB 2025 to 17 APR 2025