

LOC I-PAU <b>109.9</b>	APP CRS <b>180°</b>	Rwy ldg TDZE Apt Elev	<b>6500</b> <b>66</b> <b>66</b>
---------------------------	------------------------	-----------------------------	---------------------------------------

# LOC/DME BC RWY 18

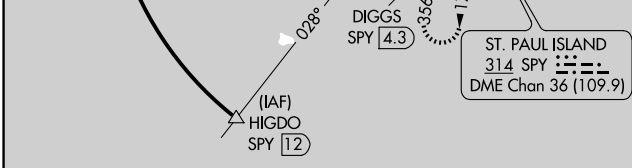
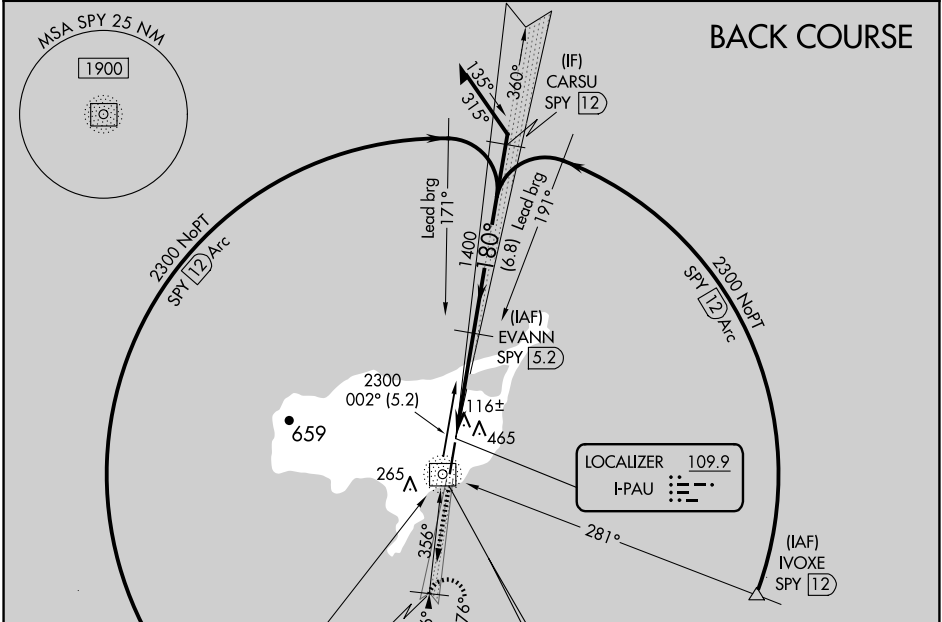
ST PAUL ISLAND (SNP) (PASN)

**▼** Inoperative table does not apply. Circling NA west of Rwy 18-36. Rwy 18 helicopter visibility reduction below 1 SM NA. DME from SPY NDB/DME. Simultaneous reception of I-PAU and SPY DME required.

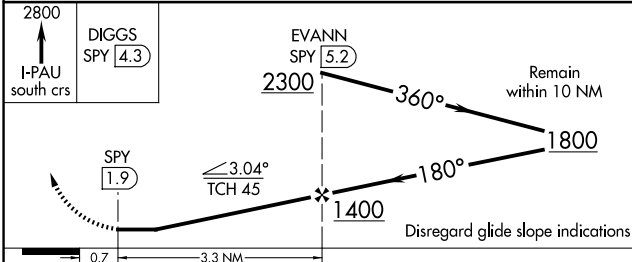
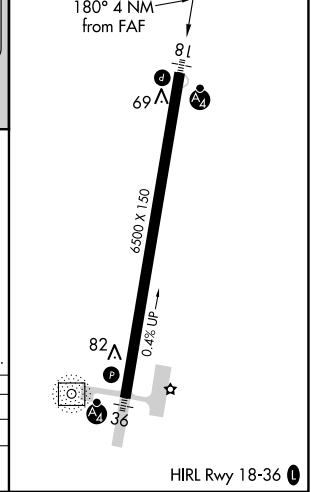


**MISSED APPROACH:** Climb to 2800 via I-PAU south course to DIGGS/SPY 4.3 DME and hold, continue climb-in-hold to 2800.

ASOS <b>135.75</b>	ANCHORAGE CENTER <b>119.1 339.8</b>	CTAF <b>122.3 0</b>
-----------------------	--	------------------------



ELEV 66	TDZE 66
---------	---------



CATEGORY	A	B	C	D
S-18	580-1	514 (600-1)	580-1½	514 (600-1½)
<b>CIRCLING</b>	800-1	734 (800-1)	800-2	800-2¼
			734 (800-2)	734 (800-2¼)

AK, 20 FEB 2025 to 17 APR 2025

AK, 20 FEB 2025 to 17 APR 2025