

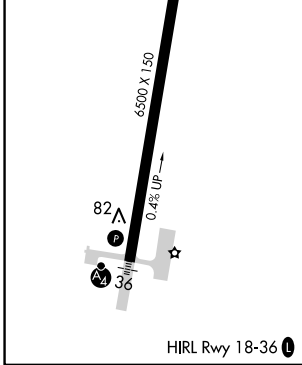
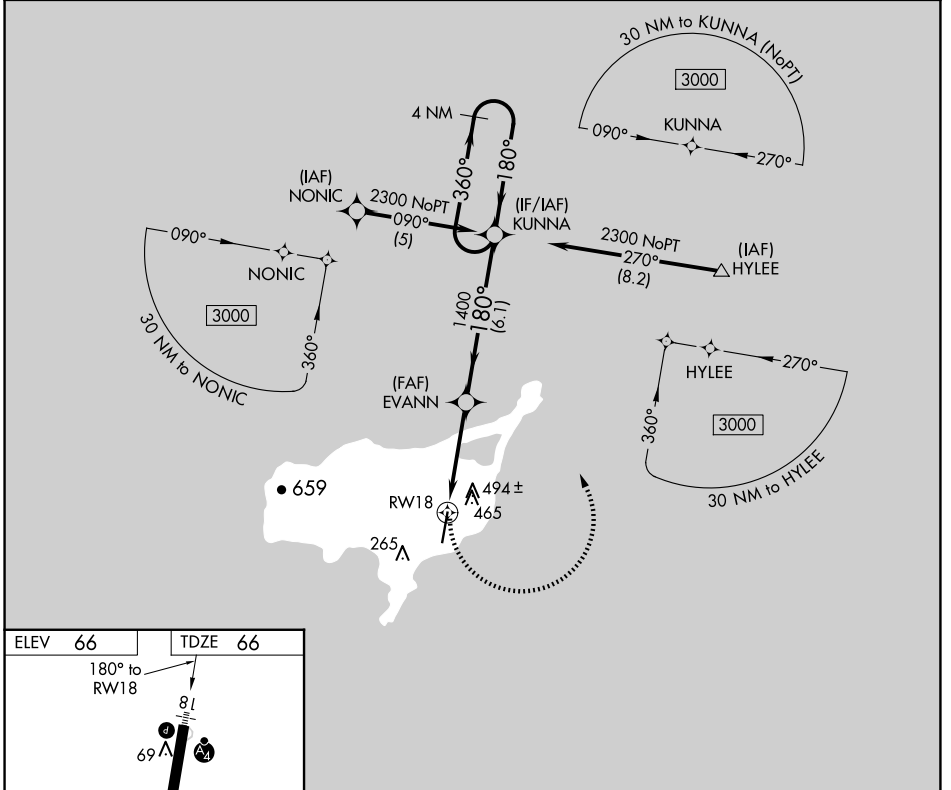
APP CRS 180°	Rwy Idg TDZE Apt Elev	6500 66 66
------------------------	-----------------------------	---------------------------------------

RNAV (GPS) RWY 18

ST PAUL ISLAND (SNP) (PASN)

RNP APCH. ⚠ Inoperative table does not apply. ⚠ Circling NA west of Rwy 18-36. Rwy 18 helicopter visibility reduction below 1 SM NA.	MALSF 	MISSED APPROACH: Climbing left turn to 2300 direct KUNNA and hold.
---	-----------	--

ASOS 135.75	ANCHORAGE CENTER 119.1 339.8	CTAF 122.3
-----------------------	--	----------------------



2300	KUNNA	KUNNA 4 NM Holding Pattern		
EVANN	1400	KUNNA		
RWY 18	3.04° TCH 45	180°	360°	
4 NM	6.1 NM	180°	2300	
CATEGORY	A	B	C	D
LNAV MDA	740-1	674 (700-1)	740-1¾ 674 (700-1¾)	740-2 674 (700-2)
CIRCLING	800-1	734 (800-1)	800-2 734 (800-2)	800-2¼ 734 (800-2¼)

AK, 20 FEB 2025 to 17 APR 2025

AK, 20 FEB 2025 to 17 APR 2025