

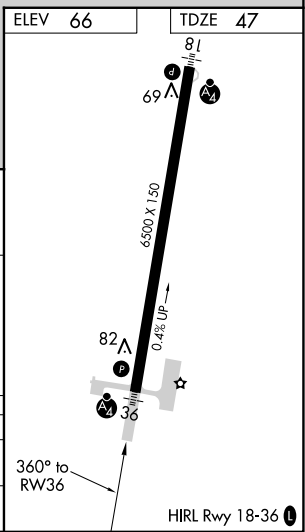
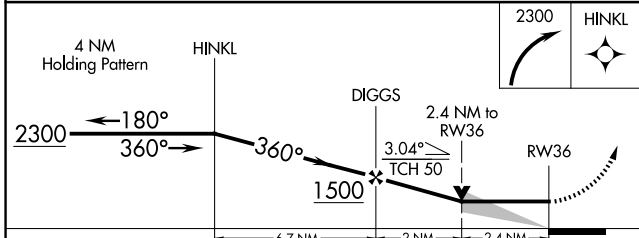
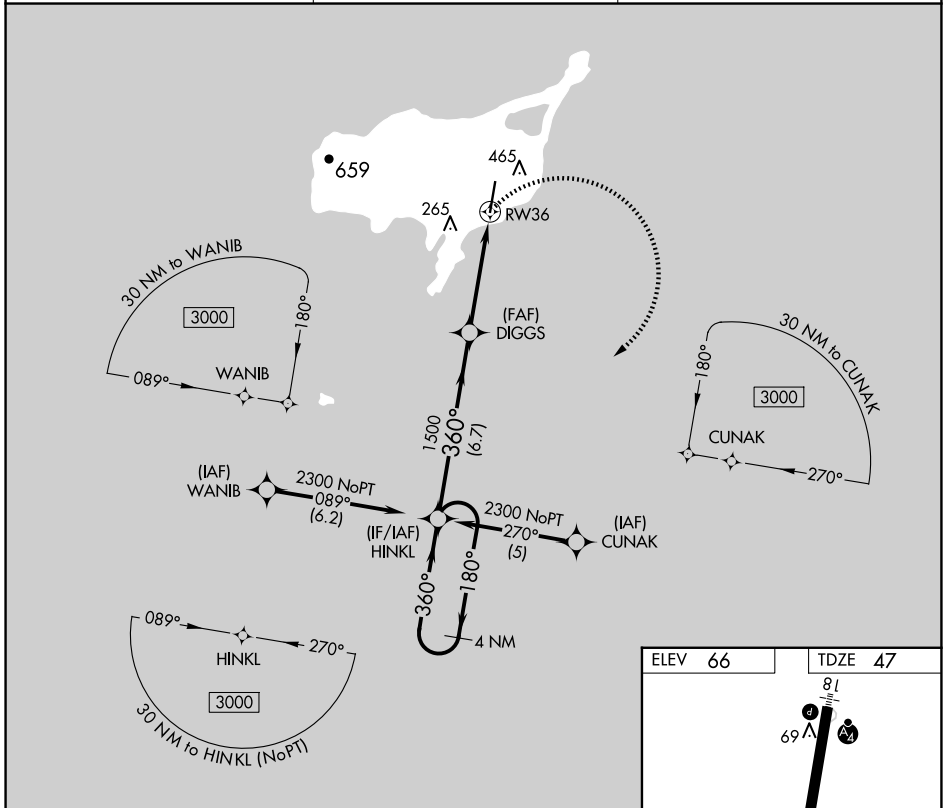
APP CRS 360°	Rwy Idg 6500
	TDZE 47
	Apt Elev 66

RNAV (GPS) RWY 36

ST PAUL ISLAND (SNP) (PASN)

RNP APCH.	MALSF	MISSED APPROACH: Climbing right turn to 2300 direct HINKL and hold.
Inoperative table does not apply. Circling NA west of Rwy 18-36.		

ASOS 135.75	ANCHORAGE CENTER 119.1 339.8	CTAF 122.3
-----------------------	--	----------------------



CATEGORY	A	B	C	D
LNVA MDA	840-1 793 (800-1)	840-1¼ 793 (800-1¼)	840-2¼ 793 (800-2¼)	840-2½ 793 (800-2½)
CIRCLING	840-1 774 (800-1)	840-1¼ 774 (800-1¼)	840-2¼ 774 (800-2¼)	840-2½ 774 (800-2½)

AK, 20 FEB 2025 to 17 APR 2025

AK, 20 FEB 2025 to 17 APR 2025