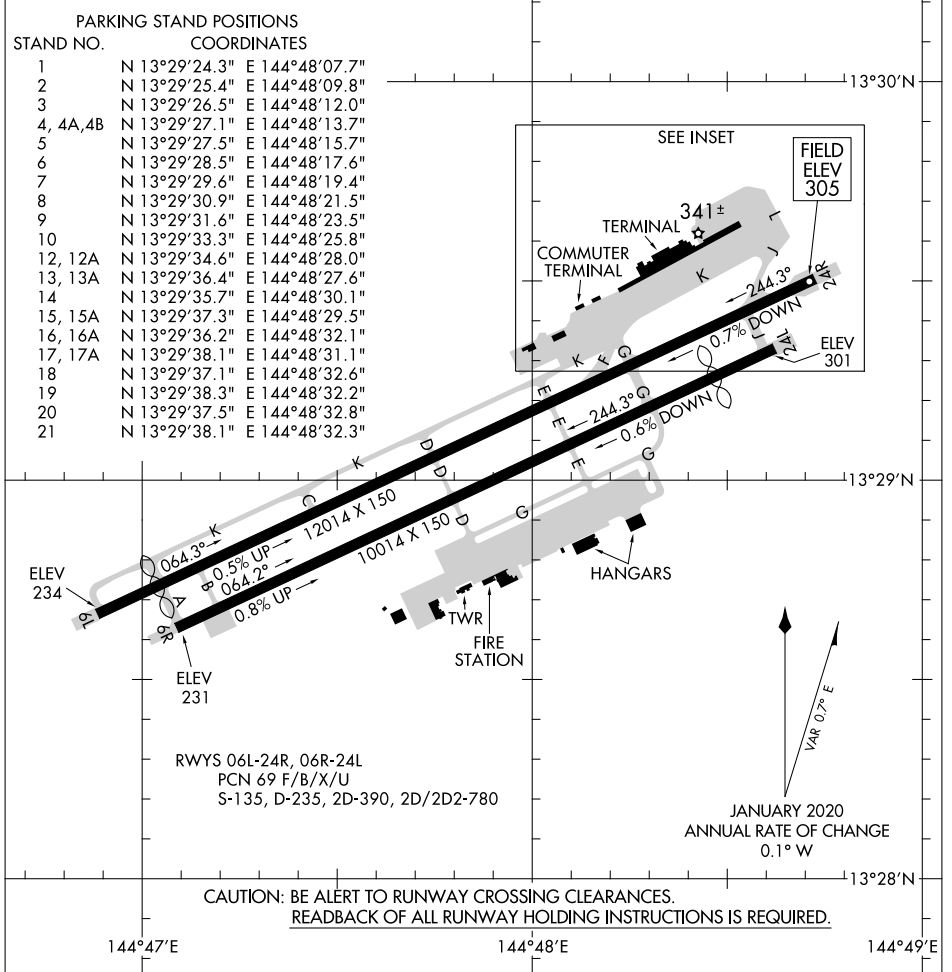
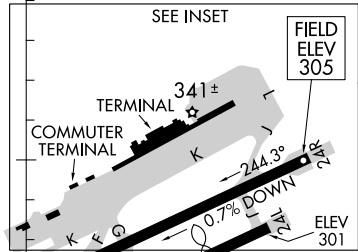


ATIS 119.0  
 AGANA TOWER 118.1 340.2  
 GND CON 121.9 336.4  
 CLNC DEL 121.9

D

**PARKING STAND POSITIONS**

STAND NO.	COORDINATES
1	N 13°29'24.3" E 144°48'07.7"
2	N 13°29'25.4" E 144°48'09.8"
3	N 13°29'26.5" E 144°48'12.0"
4, 4A, 4B	N 13°29'27.1" E 144°48'13.7"
5	N 13°29'27.5" E 144°48'15.7"
6	N 13°29'28.5" E 144°48'17.6"
7	N 13°29'29.6" E 144°48'19.4"
8	N 13°29'30.9" E 144°48'21.5"
9	N 13°29'31.6" E 144°48'23.5"
10	N 13°29'33.3" E 144°48'25.8"
12, 12A	N 13°29'34.6" E 144°48'28.0"
13, 13A	N 13°29'36.4" E 144°48'27.6"
14	N 13°29'35.7" E 144°48'30.1"
15, 15A	N 13°29'37.3" E 144°48'29.5"
16, 16A	N 13°29'36.2" E 144°48'32.1"
17, 17A	N 13°29'35.7" E 144°48'31.1"
18	N 13°29'37.1" E 144°48'32.6"
19	N 13°29'38.3" E 144°48'32.2"
20	N 13°29'37.5" E 144°48'32.8"
21	N 13°29'38.1" E 144°48'32.3"



CAUTION: BE ALERT TO RUNWAY CROSSING CLEARANCES.  
 READBACK OF ALL RUNWAY HOLDING INSTRUCTIONS IS REQUIRED.

144°47'E

144°48'E

144°49'E

PAC. 20 FEB 2025 to 17 APR 2025

PAC. 20 FEB 2025 to 17 APR 2025