

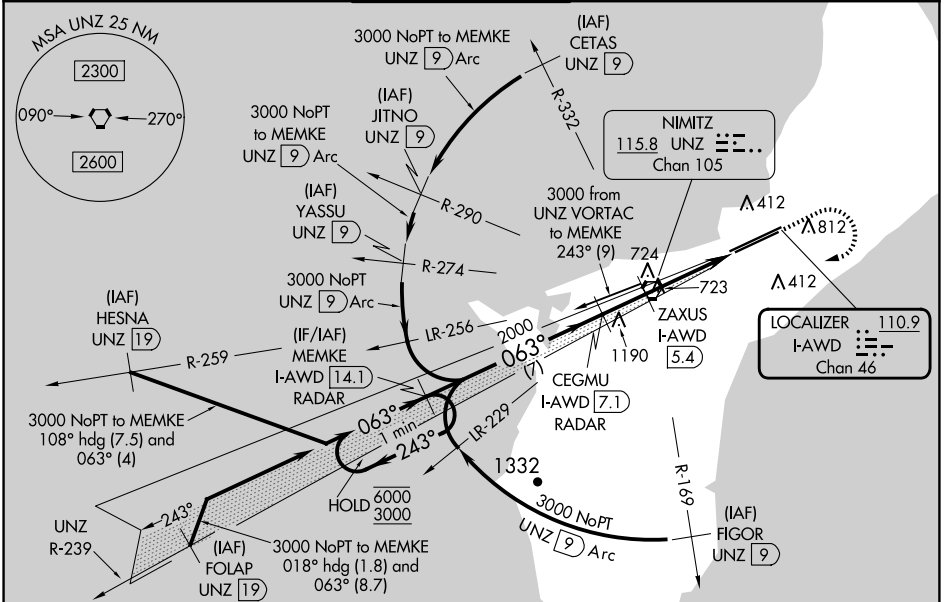
LOC/DME I-AWD <b>110.9</b> Chan <b>46</b>	APP CRS <b>063°</b>	Rwy Idg <b>10014</b> TDZE <b>258</b> Apt Elev <b>305</b>
-------------------------------------------------	------------------------	----------------------------------------------------------------

# ILS or LOC RWY 6R

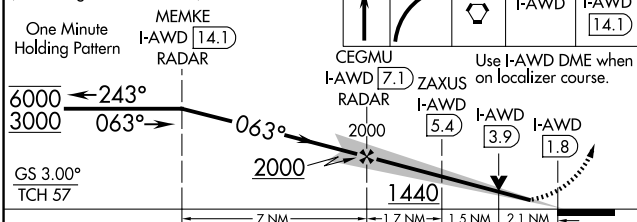
GUAM INTL (GUM)(PGUM)

DME or RADAR required.	MALSR	MISSED APPROACH: Climb to 2100 then climbing right turn to 3000 direct UNZ VORTAC and on I-AWD to MEMKE/I-AWD 14.1 DME/RADAR and hold.
<p><b>⚠</b> Circling NA southeast of Rwy 6R-24L. Rwy 6R helicopter visibility reduction below ¼ SM NA. Inop table does apply to S-LOC 6R Cat C and D. ZAXUS fix minimums (DME required): For inop ALS, increase S-LOC 6R Cat A and B visibility to 1 SM and Cats C and D to 2 SM.</p>		

ATIS <b>119.0</b>	GUAM CERAP <b>119.8 269.0</b>	AGANA TOWER <b>118.1 340.2</b>	GND CON <b>121.9 336.4</b>	CLNC DEL <b>121.9</b>
----------------------	----------------------------------	-----------------------------------	-------------------------------	--------------------------



VGSI and ILS glidepath not coincident (VGSI Angle 3.00/TCH 76).



CATEGORY	A	B	C	D
S-ILS 6R	603-¾ 345 (300-¾)			
S-LOC 6R	1440-¾ 1182 (1200-¾)	1440-1 1182 (1200-1)	1440-3	1182 (1200-3)
<b>C</b> CIRCLING	1440-1¼ 1135 (1200-1¼)	1440-1½ 1135 (1200-1½)	1440-3 1135 (1200-3)	NA
ZAXUS FIX MINIMUMS (DME REQUIRED)				
S-LOC 6R	980-¾ 722 (700-¾)	980-1⅝ 722 (700-1⅝)		
<b>C</b> CIRCLING	980-1 675 (700-1)	980-2 675 (700-2)	NA	

ELEV 305	<b>D</b> TDZE 258
HIRL all Rwys	
FAF to MAP 5.3 NM	
Knots	60 90 120 150 180
Min:Sec	5:18 3:32 2:39 2:07 1:46

PAC, 20 FEB 2025 to 17 APR 2025

PAC, 20 FEB 2025 to 17 APR 2025