

APP CRS	Rwy Idg	<b>10014</b>
<b>063°</b>	TDZE	<b>258</b>
	Apt Elev	<b>305</b>

# RNAV (RNP) Z RWY 6R

GUAM INTL (GUM)(PGUM)

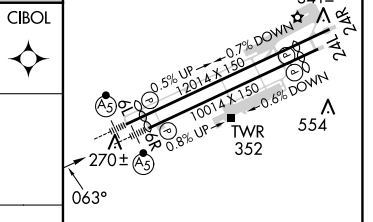
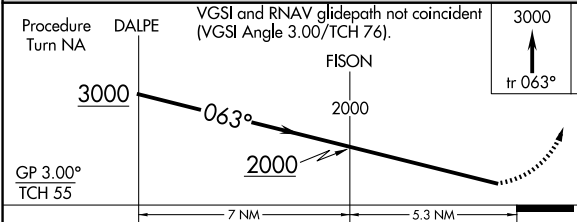
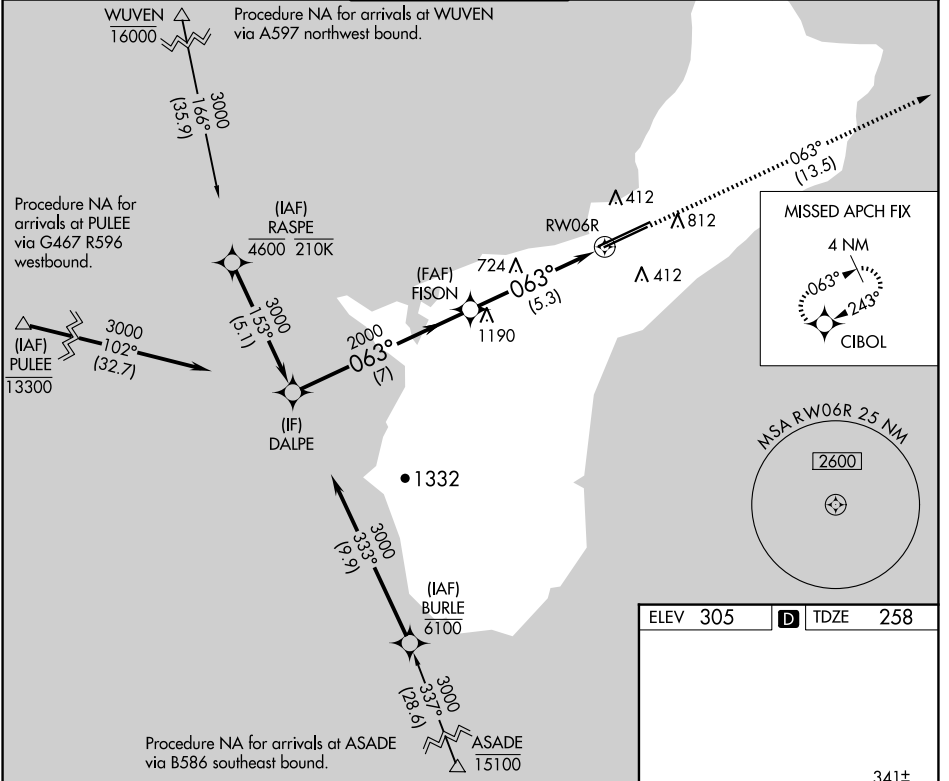
RNP AR APCH - GPS.

▼ For uncompensated Baro-VNAV systems, procedure NA below 19°C or above 48°C. For inop ALS, increase RNP 0.30 all Cats visibility to 1½ SM. Inop table does not apply to RNP 0.30.\*  
 \*Missed approach requires a minimum climb of 285 feet per NM to 1400.

MALSR 

MISSED APPROACH: Climb to 3000 via track 063° to CIBOL and hold.

ATIS	GUAM CERAP	AGANA TOWER	GND CON	CLNC DEL
<b>119.0</b>	<b>119.8 269.0</b>	<b>118.1 340.2</b>	<b>121.9 336.4</b>	<b>121.9</b>



CATEGORY	A	B	C	D
RNP 0.30* DA		511-¾	253 (300-¾)	
RNP 0.30 DA		656-¾	398 (400-¾)	

**AUTHORIZATION REQUIRED**

HIRL all Rwys

PAC, 20 FEB 2025 to 17 APR 2025

PAC, 20 FEB 2025 to 17 APR 2025