

# RNAV (GPS) Y RWY 24L

GUAM INTL (GUM)(PGUM)

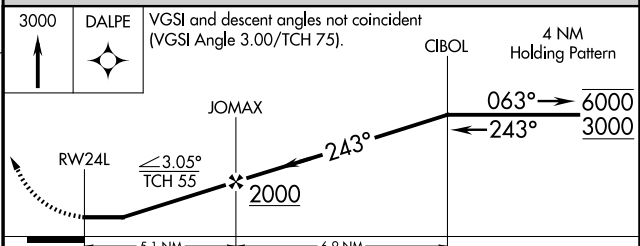
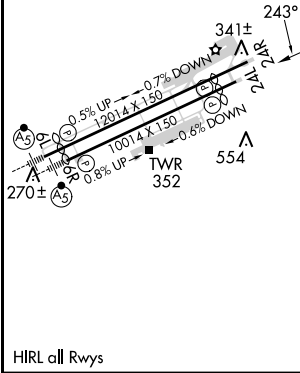
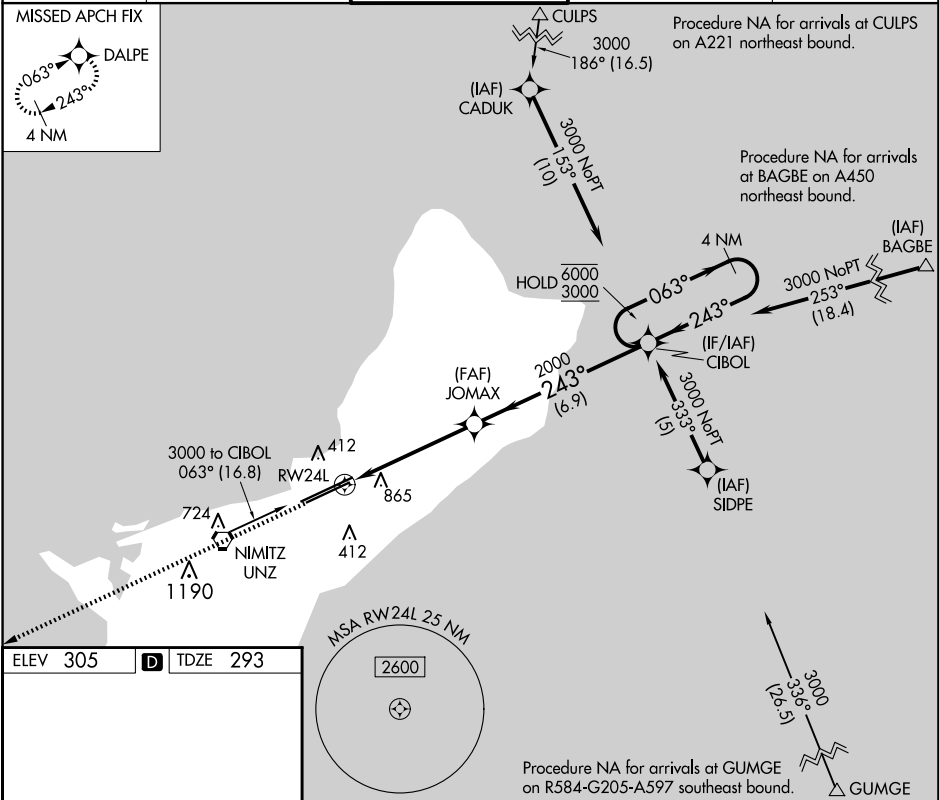
APP CRS	Rwy Idg	<b>8710</b>
<b>243°</b>	TDZE	<b>293</b>
	Apt Elev	<b>305</b>

RNP APCH - GPS.

**⚠** Circling NA southeast of Rwy 6R-24L. Rwy 24L helicopter visibility reduction below 3/4 SM NA.

MISSED APPROACH: Climb to 3000 direct DALPE and hold.

ATIS <b>119.0</b>	GUAM CERAP <b>119.8 269.0</b>	AGANA TOWER <b>118.1 340.2</b>	GND CON <b>121.9 336.4</b>	CLNC DEL <b>121.9</b>
----------------------	----------------------------------	-----------------------------------	-------------------------------	--------------------------



CATEGORY	A	B	C	D
LNAV MDA	1180-1¼	887 (900-1¼)	1180-2¾ 887 (900-2¾)	1180-3 887 (900-3)
<b>C</b> CIRCLING	1180-1¼	875 (900-1¼)	1180-2¾ 875 (900-2¾)	NA

PAC, 20 FEB 2025 to 17 APR 2025

PAC, 20 FEB 2025 to 17 APR 2025