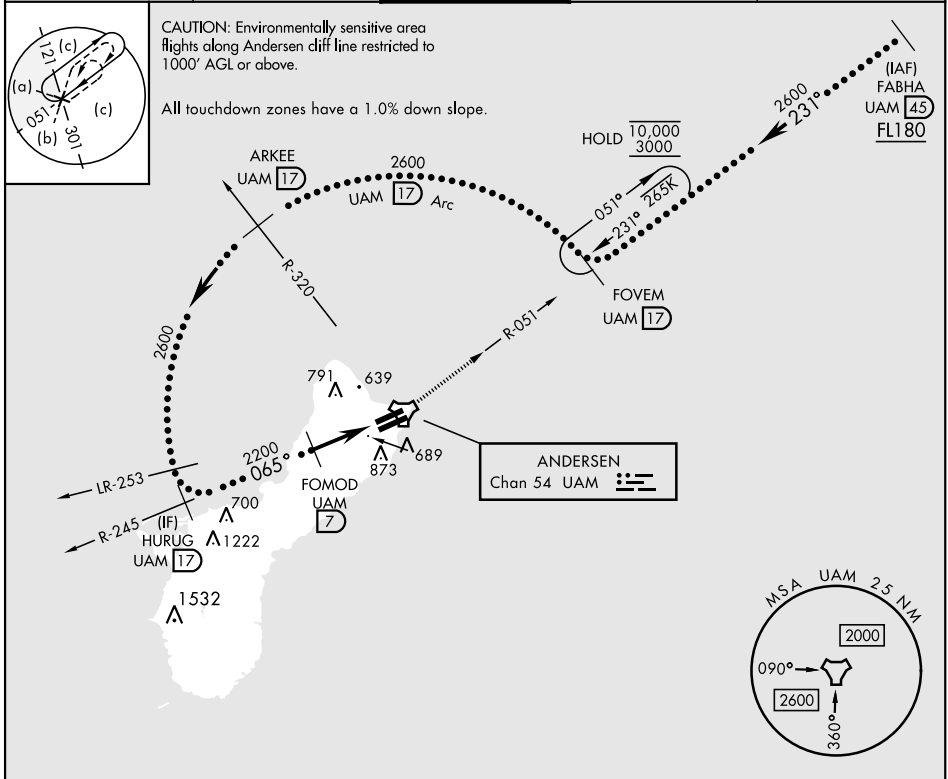


HI-TACAN X RWY 06L

TACAN UAM Chan 54	APCH CRS 065°	Rwy ldg 10,528 TDZE 539 Arpt Elev 617	[USAF]	ANDERSEN AFB (PGUA)
RADAR or DME required			SALS (A2)	MISSED APPROACH: Climb to 3000, intercept UAM R-051 to FOVEM and hold.

ATIS 118.175 254.325	GUAM APP CON 119.8 269.0	TOWER 126.2 233.7	GND CON 121.7 275.8	CLNC DEL 126.725 256.7
--------------------------------	------------------------------------	-----------------------------	-------------------------------	----------------------------------



EMERG SAFE ALT 100 NM 2900

ELEV 617 | TDZE 539

HURUG R-246 UAM **17** (2600)
FOMOD UAM **7** (2200)
TACAN (3.3, 2.5)
ITUME UAM **2.5**

FOVEM UAM **17** (3000)
UAM R-051

CATEGORY	A	B	C	D	E
S-06L*	1040/40	501 (500-¾)	1040/1¼	501 (500-1¼)	
CIRCLING**	1060-1 443 (500-1)	1080-1 463 (500-1)	1240-1¾ 623 (700-1¾)	1240-2 623 (700-2)	1240-2¼ 623 (700-2¼)

HIRL all rwys

065°
06L
06R
735 TWR
0.7% UP
0.52% x 200
0.4% UP
11,200 x 200

HI-TACAN X RWY 06L

PAC, 20 FEB 2025 to 17 APR 2025

PAC, 20 FEB 2025 to 17 APR 2025