

YIGO, GUAM I, GUAM

# RNAV (GPS) RWY 24R

APCH CRS <b>244°</b>	Rwy Idg TDZE Arprt Elev	<b>10,528</b> <b>617</b> <b>617</b>
-------------------------	-------------------------------	---

- (USAF)

ANDERSEN AFB (PGUA)

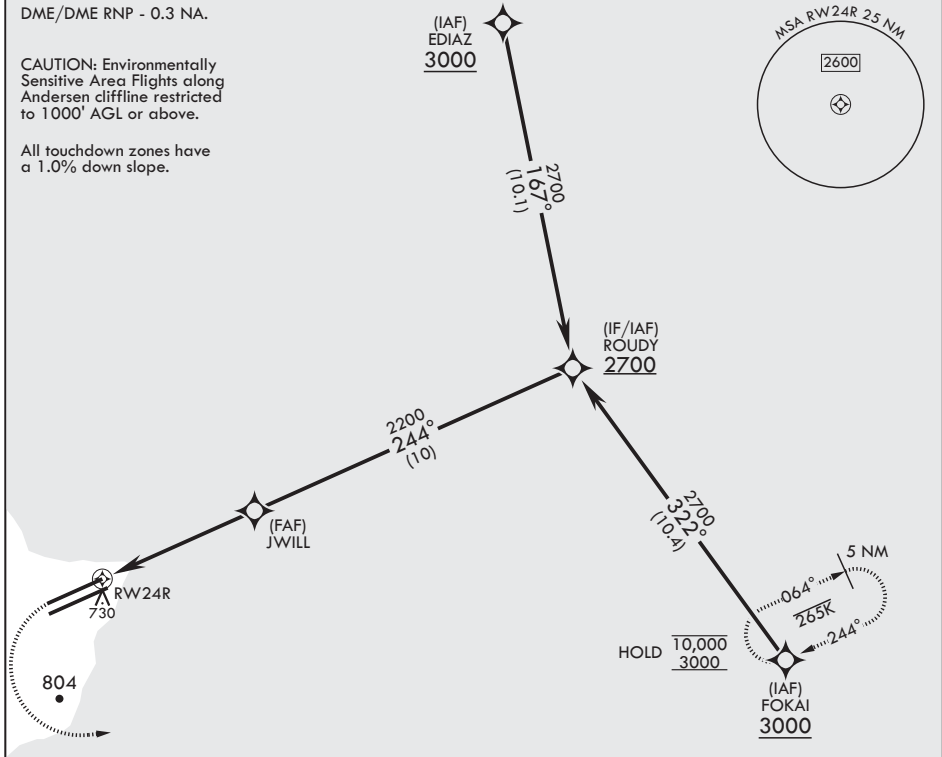
RNP APCH	ALSF-1	MISSED APPROACH: Climb to 1200, then climbing left turn to 3000 direct FOKAI and hold.
<p>▼ * When ALS inop, increase RVR to 55, vis to 1 mile. ** Circling not authorized NW of Rwy 06L-24R.</p>		

ATIS <b>118.175 254.325</b>	GUAM APP CON/DEP CON <b>119.8 269.0</b>	TOWER <b>126.2 233.7</b>	GND CON <b>121.7 275.8</b>	CLNC DEL <b>126.725 256.7</b>
--------------------------------	--	-----------------------------	-------------------------------	----------------------------------

DME/DME RNP - 0.3 NA.

CAUTION: Environmentally Sensitive Area Flights along Andersen cliffline restricted to 1000' AGL or above.

All touchdown zones have a 1.0% down slope.



EMERG SAFE ALT 100 NM 2900

  	ELEV 617	TDZE 617																		
<table border="1"> <thead> <tr> <th>CATEGORY</th> <th>A</th> <th>B</th> <th>C</th> <th>D</th> <th>E</th> </tr> </thead> <tbody> <tr> <td>LNAV MDA*</td> <td>960/24 343 (400-½)</td> <td>960/30 343 (400-¾)</td> <td>1240-1 623 (700-1¾)</td> <td>1240-2 623 (700-2)</td> <td>1240-2 1/4 623 (700-2 1/4)</td> </tr> <tr> <td>CIRCLING**</td> <td>1060-1 443 (500-1)</td> <td>1080-1 463 (500-1)</td> <td></td> <td></td> <td></td> </tr> </tbody> </table>	CATEGORY	A	B	C	D	E	LNAV MDA*	960/24 343 (400-½)	960/30 343 (400-¾)	1240-1 623 (700-1¾)	1240-2 623 (700-2)	1240-2 1/4 623 (700-2 1/4)	CIRCLING**	1060-1 443 (500-1)	1080-1 463 (500-1)				<p>HIRL all Rwys</p>	
CATEGORY	A	B	C	D	E															
LNAV MDA*	960/24 343 (400-½)	960/30 343 (400-¾)	1240-1 623 (700-1¾)	1240-2 623 (700-2)	1240-2 1/4 623 (700-2 1/4)															
CIRCLING**	1060-1 443 (500-1)	1080-1 463 (500-1)																		

YIGO, GUAM I, GUAM

13°35'N - 144°56'E

ANDERSEN AFB (PGUA)

Amdt 1 17JUN21  
TERPS

# RNAV (GPS) RWY 24R

PAC, 20 FEB 2025 to 17 APR 2025

PAC, 20 FEB 2025 to 17 APR 2025