

YIGO, GUAM I, GUAM

# RNAV (GPS) RWY 06R

APCH CRS	Rwy Idg	11,200
064°	TDZE	557
	Arprt Elev	617

- (USAF)

ANDERSEN AFB (PGUA)

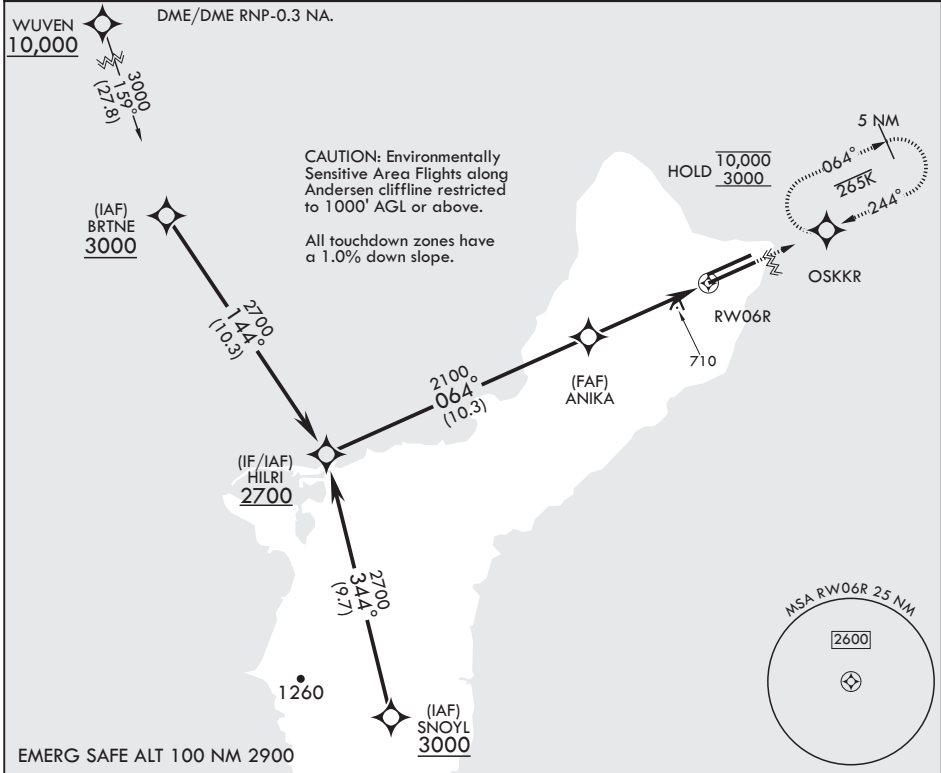
RNP APCH



MISSED APPROACH: Climb to 3000 direct OSKKR and hold.

▼ \* When ALS inop, increase CAT AB RVR to 55, vis to 1 mile; CAT CDE vis to 1 3/8 miles.  
 \*\* Circling not authorized NW of Rwy 6L-24R.

ATIS	GUAM APP CON/DEP CON	TOWER	GND CON	CLNC DEL
118.175 254.325	119.8 269.0	126.2 233.7	121.7 275.8	126.725 256.7



HILRI	3000	OSKKR	ELEV 617	TDZE 557	
2700	064°	ANIK A	2100	1.4 NM to RWY 06R	
	3.00° TCH 44			4.7 NM	
CATEGORY	A	B	C	D	E
LNAV MDA*	1040/24 483 (500-½)		1040/50 483 (500-1)		
CIRCLING**	1060-1 443 (500-1)	1080-1 463 (500-1)	1240-1¾ 623 (700-1¾)	1240-2 623 (700-2)	1240-2¼ 623 (700-2¼)

YIGO, GUAM I, GUAM

13°35'N - 144°56'E

ANDERSEN AFB (PGUA)

Amdt 1 17JUN21 TERPS

# RNAV (GPS) RWY 06R

PAC, 20 FEB 2025 to 17 APR 2025

PAC, 20 FEB 2025 to 17 APR 2025