

NDB/DME RWY 15

NDB/DME EHM 385 Chan 18 (Y)	APCH CRS 182°	Rwy ldg TDZE 456 Arprt Elev 531
---	-------------------------	--

[USAF]

CAPE NEWENHAM LRRS (PAEH)

<p>▼ Night operations not authorized.</p>	<p>MISSED APPROACH: Climbing right turn to 4500, intercept EHM NDB 002° bearing to ELPEE and hold, continue climb in holding to 4500.</p>
<p>ANCHORAGE CENTER 124.2 251.1</p>	<p>CAPE NEWENHAM RADIO 126.2</p>

**MILITARY CERTIFIED
AIRCRAFTS OR AUTHORIZED
CONTRACT AIRCRAFT
ONLY**

NOT FOR CIVIL USE

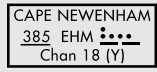
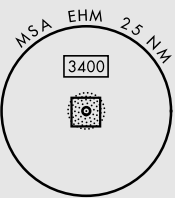
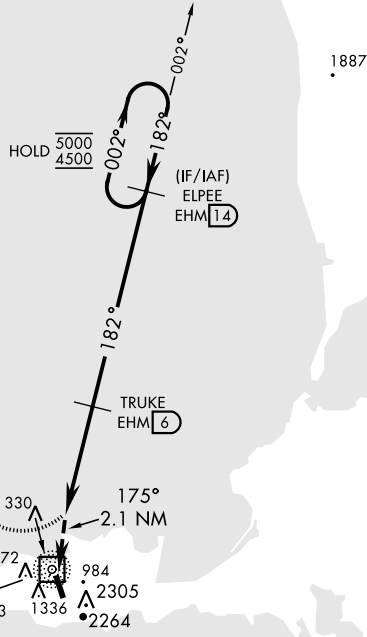
CAUTION:

1. Rwy located on slope of 2306' mountain. High terrain both sides and S end of Rwy.

2. Successful go-around improbable if initiated past the MAP.

Uncontrolled Airspace below 700' AGL within 7 NM of Cape Newenham airport.

Terrain, 235' MSL, 200' from threshold, 1611' left of course.



EMERG SAFE ALT 100 NM 7100

<p>4500 brg 002°</p>	<p>ELPEE EHM 14</p>	<p>VGSI and descent angles not coincident (VGSI 3.00/TCH 45)</p>	<p>ELPEE 14</p>	<p>ELEV 531</p>	<p>TDZE 456</p>
<p>NDB/DME Fly Visual 175° 2.1 NM</p> <p>CILAS 2</p> <p>TRUKE 6</p> <p>2200</p> <p>3.00° TCH 41</p> <p>2.1 NM 4 NM</p>			<p>5000 182° 4500</p> <p>182° 4500</p> <p>175°</p> <p>7.7% UP</p> <p>3945 x 150</p> <p>33</p>		
CATEGORY	A	B	C	D	
S-15	1240-2½	784	(800-2½)	NOT AUTHORIZED	
CIRCLING	NOT AUTHORIZED				
			REIL Rwy 15 Land Rwy 15 tkof Rwy 33		

NDB/DME RWY 15

AK, 20 FEB 2025 to 17 APR 2025

AK, 20 FEB 2025 to 17 APR 2025