

# NDB/DME RWY 2

NDB CZF <b>275</b>	APCH CRS <b>051°</b>	Rwy ldg TDZE Arprt Elev <b>3925</b> <b>444</b> <b>467</b>
-----------------------	-------------------------	---

[USAF]

CAPE ROMANZOF LRRS (PACZ)

<p>▼ Night operations not authorized. Helicopter vis reduction below 1 mile not authorized. Circling not authorized.</p>	<p>MISSED APPROACH: Climb left turn to 3600 to intercept CZF NDB 231° bearing to MOTRS/12 DME and hold.</p>
--	---

<p>ANCHORAGE CENTER <b>124.5 266.8</b></p>	<p>CTAF <b>126.2</b></p>	<p>KENAI RADIO <b>122.1</b></p>
--	------------------------------	-------------------------------------

CAUTION: Final Approach Course intersects extended runway centerline 4520' prior to threshold. Missed approach requires use of RNAV or ATC RADAR monitoring.

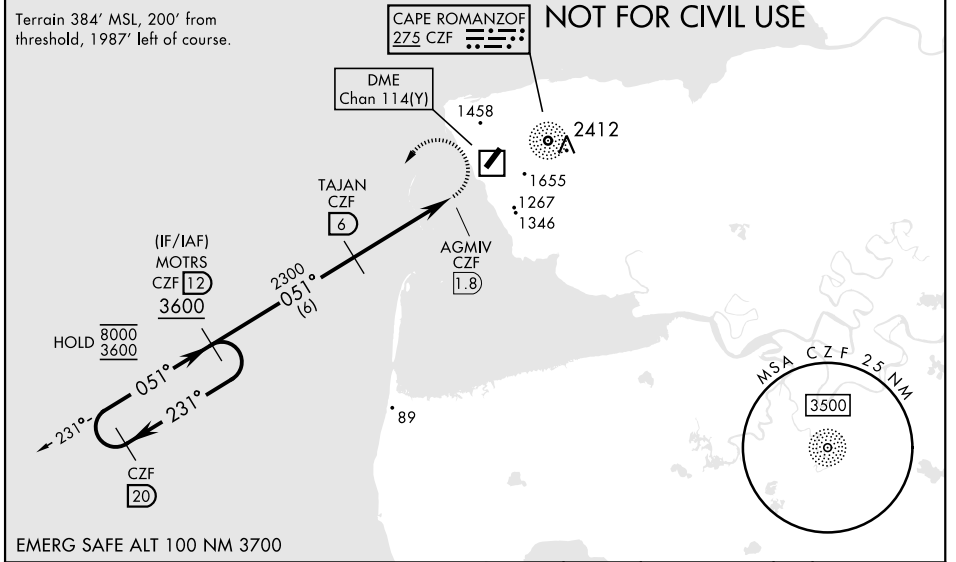
Successful go-around improvable if initiated beyond the MAP.

Uncontrolled Airspace below 700' AGL within 7 NM of Cape Romanzof airport.

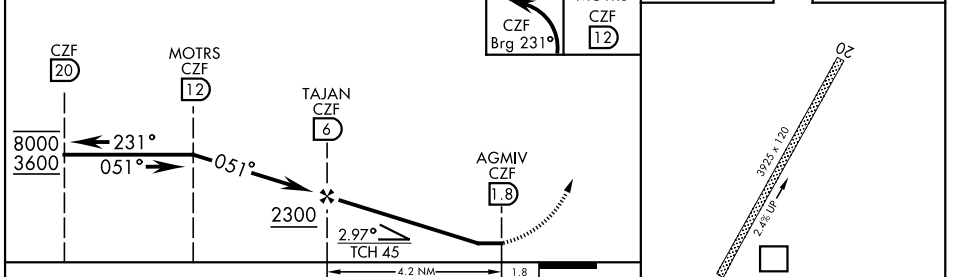
Terrain 384' MSL, 200' from threshold, 1987' left of course.

**MILITARY CERTIFIED  
AIRCREWS OR AUTHORIZED  
CONTRACT AIRCRAFT ONLY**

## NOT FOR CIVIL USE



EMERG SAFE ALT 100 NM 3700



	ELEV	467	TDZE	444
		CZF Brg 231°	MOTRS CZF 12	
CATEGORY	A	B	C	
S-2	1580-2½	1136 (1200-2½)	1580-3 1136 (1200-3)	
◻ CIRCLING	NOT AUTHORIZED			

CAPE ROMANZOF, ALASKA 61°47'N-166°02'W CAPE ROMANZOF LRRS (PACZ)

Amdt 3 15JUN23

# NDB/DME RWY 2

AK, 20 FEB 2025 to 17 APR 2025

AK, 20 FEB 2025 to 17 APR 2025