

CAPE ROMANZOF, ALASKA

RNAV (GPS) RWY 2

APCH CRS	Rwy Idg	3925
021°	TDZE	444
	Arprt Elev	467

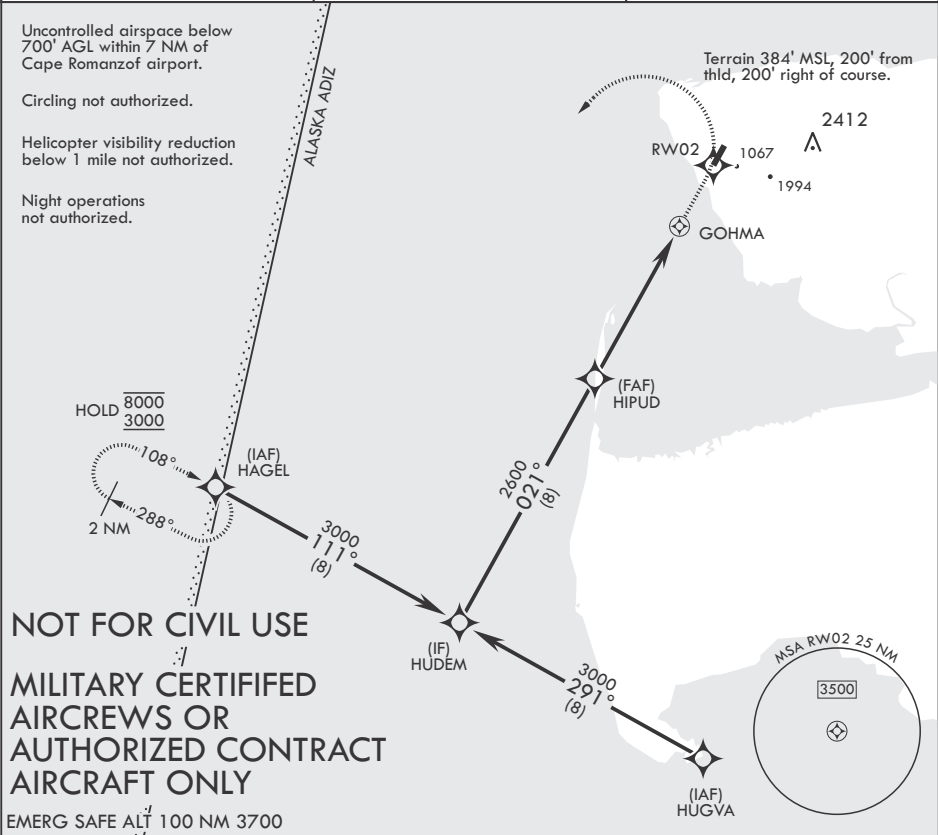
- (USAF)

CAPE ROMANZOF LRRS (PACZ)

RNP APCH-GPS

MISSED APPROACH: Climb to 1500 then climbing left turn to 3000 direct HAGEL and hold.

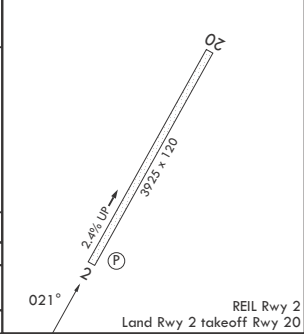
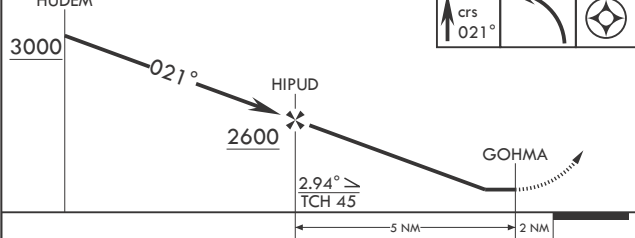
ANCHORAGE CENTER 124.5 266.8	CTAF 126.2	KENAI RADIO 122.1
--	----------------------	-----------------------------



NOT FOR CIVIL USE
MILITARY CERTIFIED
AIRCREWS OR
AUTHORIZED CONTRACT
AIRCRAFT ONLY

EMERG SAFE ALT 100 NM 3700

HUDEM	1500	3000	HAGEL	ELEV 467	TDZE 444
-------	------	------	-------	----------	----------



CATEGORY	A	B	C	D
LNAV MDA	1540-2½	1095 (1100-2½)	1540-3 1095 (1100-3)	NA
CIRCLING	NOT AUTHORIZED			

CAPE ROMANZOF, ALASKA 61°47'N - 166°02'W CAPE ROMANZOF LRRS (PACZ)

Orig 11JUL24

RNAV (GPS) RWY 2

REIL Rwy 2

Land Rwy 2 takeoff Rwy 20

AK, 20 FEB 2025 to 17 APR 2025

AK, 20 FEB 2025 to 17 APR 2025