

# NDB RWY 35

NDB CRN <b>281</b>	APCH CRS <b>357°</b>	Rwy Idg TDZE Arprt Elev <b>4200</b> <b>1476</b> <b>1565</b>
-----------------------	-------------------------	--

[USAF]

SPARREVOHN LRRS (PASV)

▼ Night operations not authorized.  
Visibility reduction by helicopters NA.

MISSED APPROACH: Climb to 4200, then climbing right turn to 5600 direct CRN and hold. Continue climb in hold to 5600.

ANCHORAGE CENTER <b>134.3 351.8</b>	KENAI RCO <b>122.5</b>	SPARREVOHN RADIO <b>126.2</b> (CTAF)	AWOS-3
--	---------------------------	---	--------

CAUTION: Rwy surrounded by mountains. Rwy located on slope of 3236' mountain. Approach from S only, land Rwy 35 only.

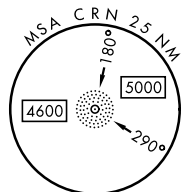
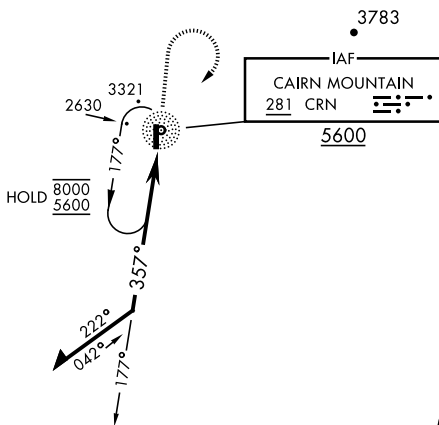
CAUTION: Terrain 1530' MSL, 2773' from thld, 1008' left of course.

Successful go-around improbable if initiated past the MAP.

Uncontrolled Airspace below 700' AGL within 3 NM of Sparrevohn airport.

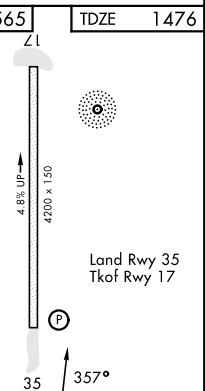
## MILITARY CERTIFIED AIRCREWS OR AUTHORIZED CONTRACT AIRCRAFT ONLY

### NOT FOR CIVIL USE



EMERG SAFE ALT 100 NM 13,700

Remain within 10 NM	CRN NDB	4200	5600	CRN	ELEV	1565	TDZE	1476
	5600				Z1			
4400	177°	357°						
CATEGORY	A	B	C	D				
S-35	3580-1¼ 2104 (2100-1¼)	3580-1½ 2104 (2100-1½)	3580-3 2104 (2100-3)	NOT AUTHORIZED				
CIRCLING	NOT AUTHORIZED							
					REIL Rwy 35	35	357°	



AK, 20 FEB 2025 to 17 APR 2025

AK, 20 FEB 2025 to 17 APR 2025

# NDB RWY 35