

# NDB/DME RWY 35

|  |                         |  |
|--|-------------------------|--|
| NDB/DME TNC<br><b>347</b><br>Chan <b>119 (Y)</b> | APCH CRS<br><b>343°</b> | Rwy Idg TDZE<br><b>273</b><br>Arprt Elev<br><b>273</b> |
|--|-------------------------|--|

[USAF]

TIN CITY LRRS (PATC)

▼ \* Circling not authorized W of Rwy 17-35.  
Night operations not authorized.

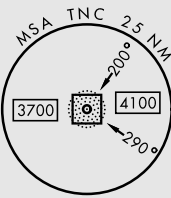
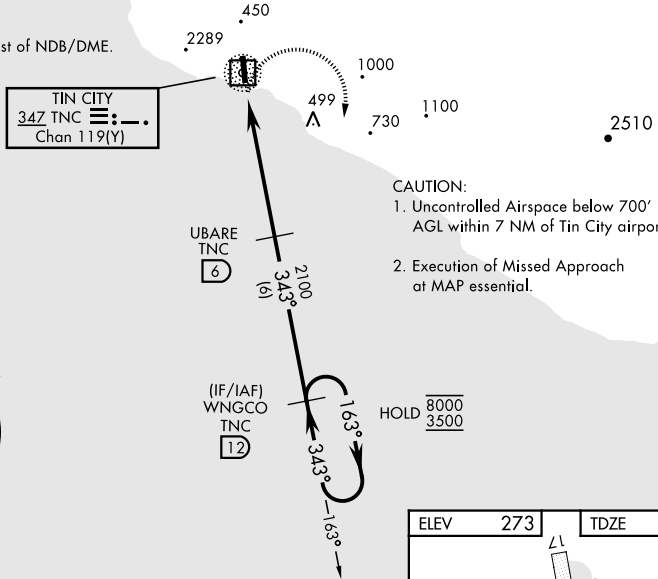
MISSED APPROACH: Climbing right turn to 3600 intercept TNC 163° bearing to WNGCO and hold.  
Continue climb-in-hold to 3600.

|  |   |                               |
|--|---|-------------------------------|
| ANCHORAGE CENTER<br><b>133.3 290.4</b> | TIN CITY RCO (NOME RADIO)<br><b>122.6</b> | UNICOM<br><b>126.2 (CTAF)</b> |
|--|---|-------------------------------|

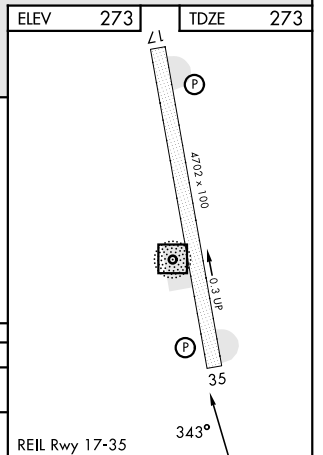
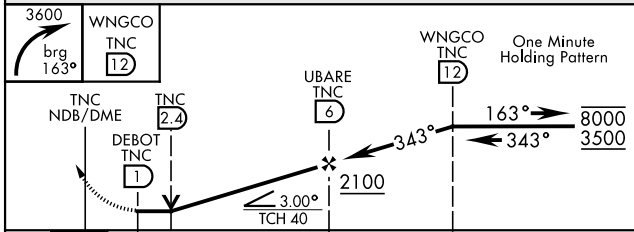
**MILITARY CERTIFIED  
AIRCREWS OR AUTHORIZED  
CONTRACT AIRCRAFT ONLY**

**NOT FOR CIVIL USE**

CAUTION:  
2289' mountain 2 NM West of NDB/DME.



EMERG SAFE ALT 100 NM 7000



| CATEGORY    | A                 | B | C                 | D              |
|-------------|-------------------|---|-------------------|----------------|
| S-35        | 980-1 707 (800-1) |   | 980-2 707 (800-2) | NOT AUTHORIZED |
| ◼ CIRCLING* | 980-1 707 (800-1) |   | 980-2 707 (800-2) | NOT AUTHORIZED |

REIL Rwy 17-35

# NDB/DME RWY 35