

HUNTER LIGGETT, CALIFORNIA

COPTER RNAV (GPS) RWY 32

| | | |
|-------------|-----------|-------------|
| APCH CRS | Rwy Idg | 570 |
| 301° | TDZE | 1017 |
| | Arpt Elev | 1017 |

[USA] AL-3073 (MIL)

TUSI AHP (KHGT)

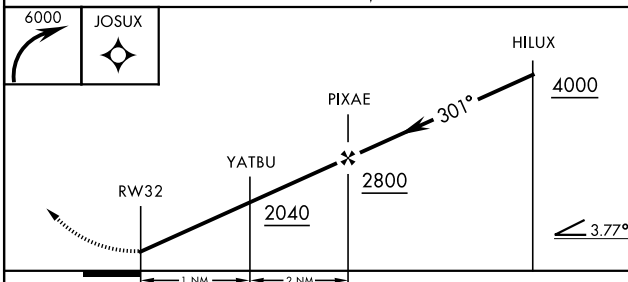
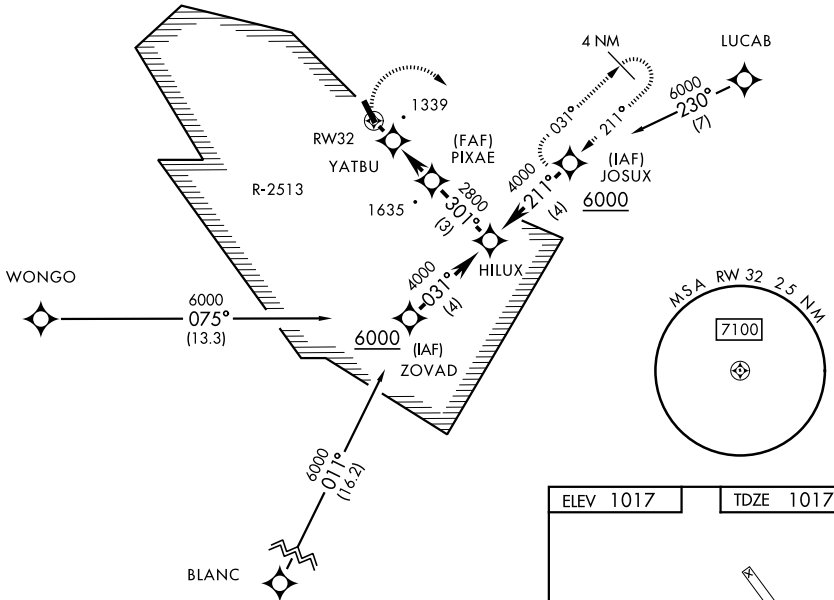
| | |
|---|--|
| <p>▼ Procedure NA when Fort Hunter-Liggett altimeter setting not available.</p> <p>▲ NA Limit final and missed approach to 90 KIAS.</p> | <p>MISSED APPROACH: Climbing right turn to 6000 direct JOSUX and hold.</p> |
|---|--|

| | |
|---|--|
| <p>OAKLAND CENTER</p> <p>128.7 307.0</p> | <p>RANGE CON/OPS</p> <p>41.05 126.2 229.5</p> |
|---|--|

NOT FOR CIVIL USE

DME/DME RNP-0.3 NA

• 5880



| | |
|-----------|-----------|
| ELEV 1017 | TDZE 1017 |
|-----------|-----------|

TDZE 1017

301° 3.0 NM from FAF

MIRL Rwy 14-32

| | | |
|----------|--------|-------------|
| CATEGORY | COPTER | |
| LNAV MDA | 1660-½ | 643 (700-½) |

HUNTER LIGGETT, CALIFORNIA

36°00'N - 121°14'W

TUSI AHP (KHGT)

Orig A 16JUL20
PANS-OPS

COPTER RNAV (GPS) RWY 32

SW-3, 20 FEB 2025 to 20 MAR 2025

SW-3, 20 FEB 2025 to 20 MAR 2025