

ILS or LOC/DME RWY 32

LOC I-UVV 111.7	APCH CRS 321°	Rwy Ildg THRE 12,001 5550 Arprt Elev 5550
---------------------------	-------------------------	---

AL-3188 [USAF]

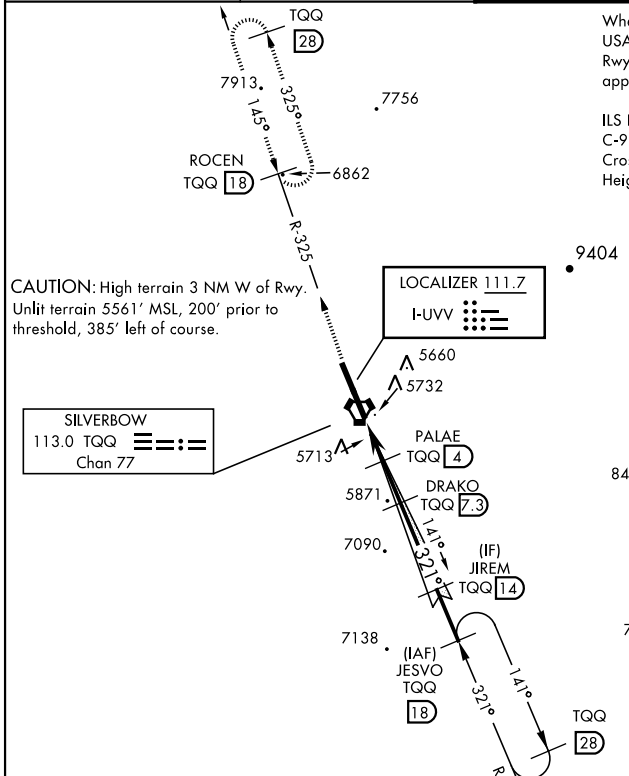
TONOPAH TEST RANGE (KTNX)

▼ * When ALS inop, increase CAT CDE vis to 1/4 miles.
** Circling not authorized W of Rwy 14-32



MISSED APPROACH: Climb to 11,000 via TQQ VORTAC R-325 to ROCEN and hold, continue climb in hold to 11,000.

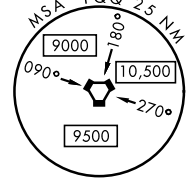
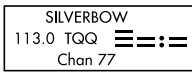
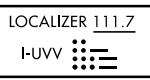
AWOS 113.0	NELLIS CONTROL 119.35 254.4	SILVERBOW TOWER * 124.75 257.95	GND CON 127.25 335.5
----------------------	---------------------------------------	---	--------------------------------



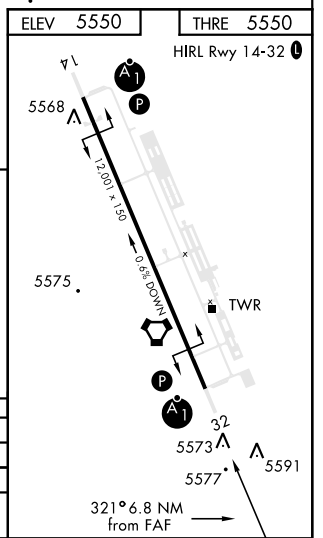
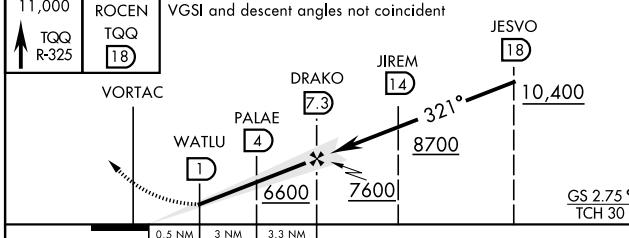
When VGSI inop, procedure NA at night.
USAF ONLY: When VGSI inop, straight-in Rwy 32 authorized at night with MAJCOM A3 approval.

ILS Rwy 32; F-28, CV-340/440/580, B-737, C-9, DC-9, C-130, T-43, B-2, S-3 Wheel Crossing Height 15'. ILS procedure NA for Height Group 3 and 4 aircraft due to low TCH.

CAUTION: High terrain 3 NM W of Rwy. Unlit terrain 5561' MSL, 200' prior to threshold, 385' left of course.



EMERG SAFE ALT 100 NM 16,600



CATEGORY	A	B	C	D	E
S-ILS 32		5800-1	250 (300-1)		
S-LOC 32*		5980-1	430 (500-1)		
CIRCLING**	6040-1 490 (500-1)	6040-1 1/2 490 (500-1/2)	6100-2 550 (600-2)		

ILS or LOC/DME RWY 32

SW-4, 20 FEB 2025 to 20 MAR 2025

SW-4, 20 FEB 2025 to 20 MAR 2025