

TONOPAH, NEVADA

RNAV (GPS) RWY 14

APCH CRS	Rwy ldg	12,001
141°	TDZE	5496
	Arprt Elev	5550

AL-3188 [USAF]

TONOPAH TEST RANGE (KTNX)

▼ * When ALS inop, increase CAT AB RVR to 55, vis to 1 mile, CAT CD vis to 1 3/8 miles.
 ** Circling not authorized W of Rwy 14-32.



MISSED APPROACH: Turn left climbing to 11,000 direct JADPU and hold, continue climb-in-hold to 11,000.

AWOS 113.0	NELLIS CONTROL 119.35 254.4	SILVERBOW TOWER * 124.75 257.95	GND CON 127.25 335.5
----------------------	---------------------------------------	---	--------------------------------

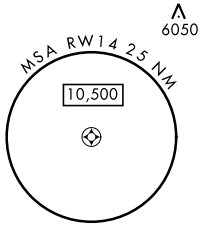
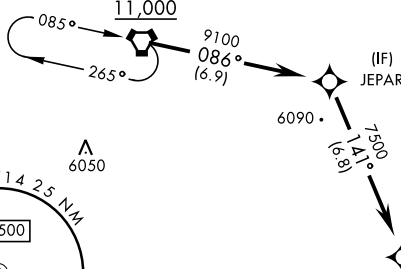
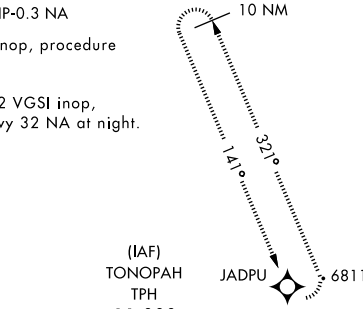
DME/DME RNP-0.3 NA

When VGSI inop, procedure NA at night.

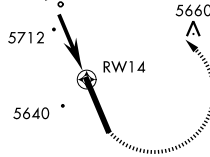
When Rwy 32 VGSI inop, circling to Rwy 32 NA at night.

Unlit terrain 5558' MSL, 200' prior to Rwy 32 threshold, 200' left of centerline.
 When VGSI inop, procedure NA at night.

USAF ONLY: When Rwy 14 VGSI inop, straight-in Rwy 14 authorized at night with MAJCOM A3 approval.

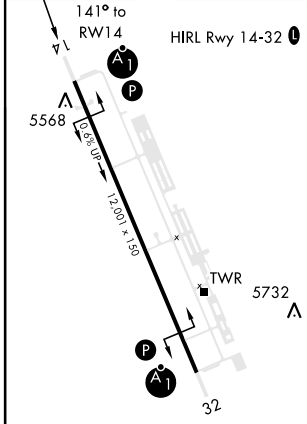


CAUTION: High terrain 3 NM W of rwy.

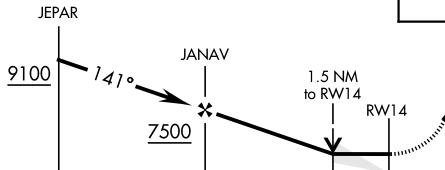
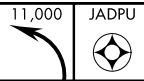


EMERG SAFE ALT 100 NM 16,600

ELEV	5550	TDZE	5496
------	------	------	------



VGSI and descent angles not coincident



CATEGORY	A	B	C	D
LNVA MDA *	5960/24 464 (500-1/2)		5960/50 464 (500-1)	
CIRCLING **	6040-1 490 (500-1)		6040-1 1/2 490 (500-1 1/2)	6100-2 550 (600-2)

TONOPAH, NEVADA
 Amdt 4 29MAR18

37°47'N-116°47'W

TONOPAH TEST RANGE (KTNX)

RNAV (GPS) RWY 14

SW-4, 20 FEB 2025 to 20 MAR 2025

SW-4, 20 FEB 2025 to 20 MAR 2025