

TONOPAH, NEVADA

# RNAV (GPS) RWY 32

APCH CRS	Rwy ldg	12,001
321°	TDZE	5550
	Arpt Elev	5550

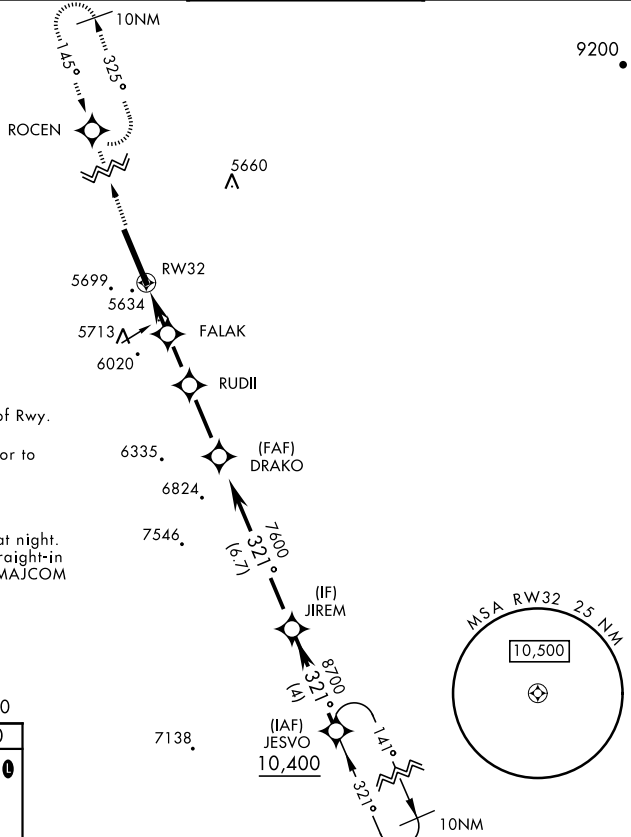
AL-3188 [USAF]

TONOPAH TEST RANGE (KTNX)

**ALSF-1** MISSED APPROACH: Climb to 11,000 direct ROCEN and hold, continue climb-in-hold to 11,000.

AWOS <b>113.0</b>	NELLIS CONTROL <b>119.35 254.4</b>	SILVERBOW TOWER * <b>124.75 257.95</b> 0	GND CON <b>127.25 335.5</b>
----------------------	---------------------------------------	---	--------------------------------

DME/DME RNP-0.3 NA

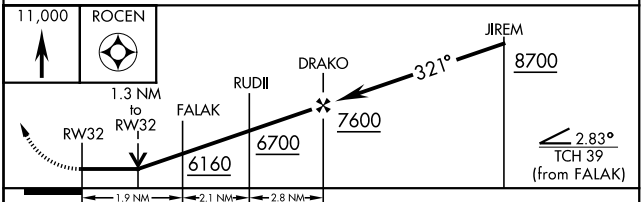
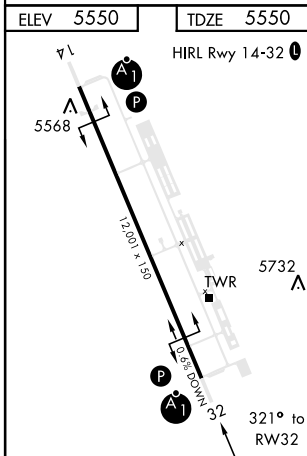


CAUTION: High terrain 3 NM W of Rwy.

Unlit terrain 5561' MSL, 200' prior to threshold, 385' left of course.

When VGSI inop, procedure NA at night. USAF ONLY: When VGSI inop, straight-in Rwy 32 authorized at night with MAJCOM A3 approval.

EMERG SAFE ALT 100 NM 16,600



CATEGORY	A	B	C	D
LNAV MDA *	5980/24 430 (500-1/2)	5980/40 430 (500-3/4)		
CIRCLING **	6040-1 490 (500-1)	6040-1 1/2 490 (500-1/2)	6100-2 550 (600-2)	

TONOPAH, NEVADA  
Amdt 3 29MAR18

37°47'N-116°47'W

TONOPAH TEST RANGE (KTNX)

# RNAV (GPS) RWY 32

SW-4, 20 FEB 2025 to 20 MAR 2025

SW-4, 20 FEB 2025 to 20 MAR 2025