

18200

# STOFF TWO DEPARTURE (STOFF2•STOFF)

TONOPAH TEST RANGE (KTNX)

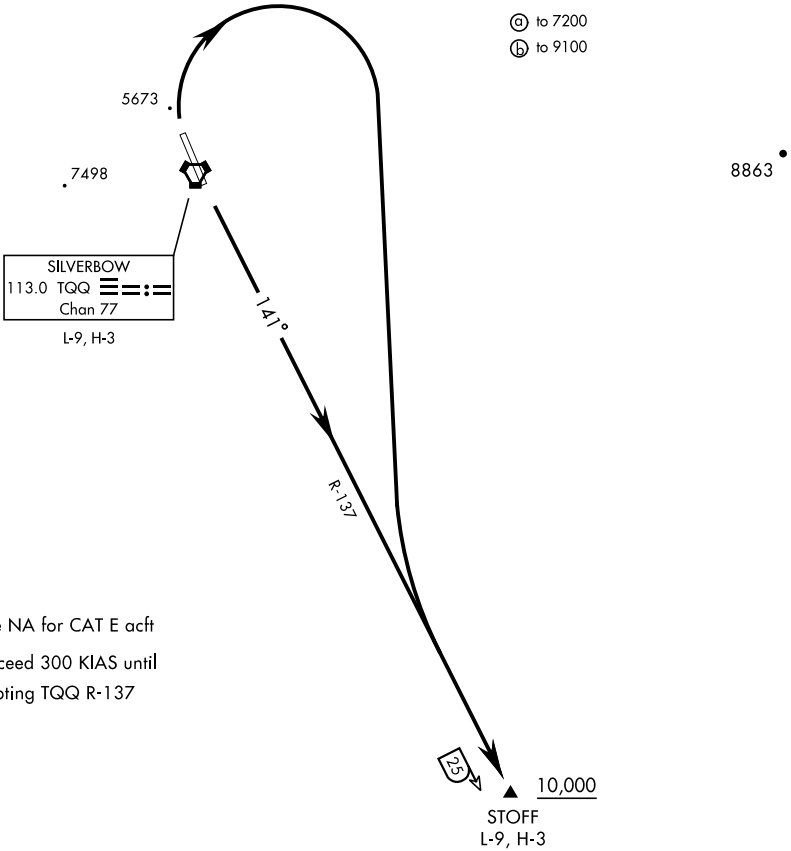
TONOPAH, NEVADA

GND CON  
 127.25 335.5  
 SILVERBOW TOWER ★  
 124.75 257.95  
 NELLIS CONTROL  
 119.35 254.4

Rwy	Knots	60	120	180	240	300	360
14 (a)	V/V(fpm)	205	410	615	820	1025	1230
32 (b)	V/V(fpm)	260	520	780	1040	1300	1560

### MINIMUM CLMB RATE

- (a) to 7200
- (b) to 9100



Procedure NA for CAT E acft  
 Do not exceed 300 KIAS until  
 intercepting TQQ R-137

SW-4, 20 FEB 2025 to 20 MAR 2025

SW-4, 20 FEB 2025 to 20 MAR 2025



### DEPARTURE ROUTE DESCRIPTION

TAKE-OFF RWY 14: Climb heading 141° to intercept TQQ VORTAC R-137 to STOFF, cross STOFF at or above 10,000.

TAKE-OFF RWY 32: Climbing right turn to intercept TQQ VORTAC R-137 to STOFF, cross STOFF at or above 10,000.

# STOFF TWO DEPARTURE (STOFF2•STOFF)

TONOPAH, NEVADA  
TONOPAH TEST RANGE (KTNX)