

TONOPAH, NEVADA

# VOR/DME or TACAN RWY 32

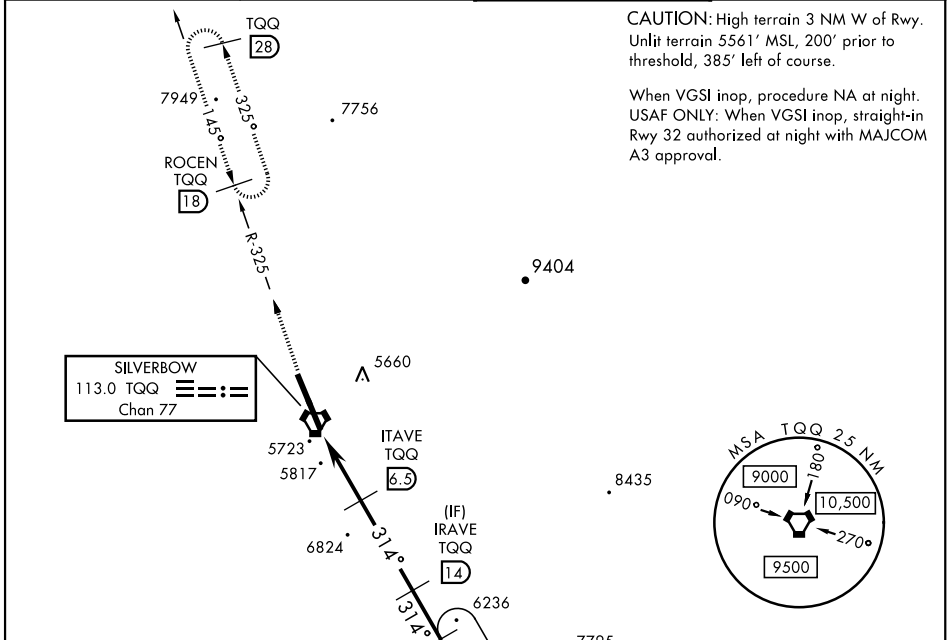
VORTAC TQQ <b>113.0</b> Chan <b>77</b>	APCH CRS <b>314°</b>	Rwy ldg <b>12,001</b> THRE <b>5550</b> Arprt Elev <b>5550</b>
--	-------------------------	---

AL-3188 [USAF]

TONOPAH TEST RANGE (KTNX)

<p><b>▼</b> * When ALS inop, increase CAT CDE vis to 1½ miles. ** Circling not authorized W of Rwy 14-32</p>	<p>ALSF-1</p> 	<p>MISSED APPROACH: Climb to 11,000 via TQQ VORTAC R-325 to ROCEN and hold, continue climb in hold to 11,000.</p>
--	---	---

AWOS <b>113.0</b>	NELLIS CONTROL <b>119.35 254.4</b>	SILVERBOW TOWER* <b>124.75 257.95</b>	GND CON <b>127.25 335.5</b>
----------------------	---------------------------------------	--	--------------------------------



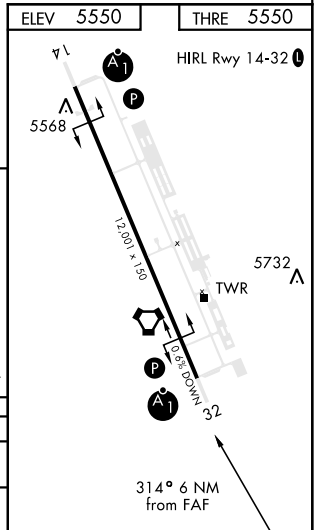
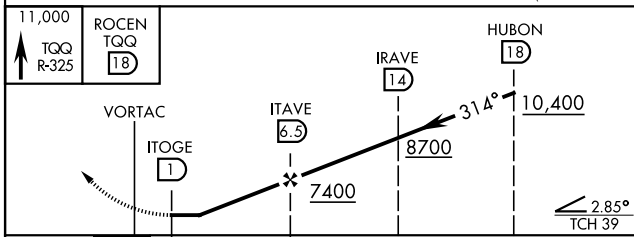
CAUTION: High terrain 3 NM W of Rwy. Unlit terrain 5561' MSL, 200' prior to threshold, 385' left of course.

When VGSI inop, procedure NA at night. USAF ONLY: When VGSI inop, straight-in Rwy 32 authorized at night with MAJCOM A3 approval.

SW-4, 20 FEB 2025 to 20 MAR 2025

SW-4, 20 FEB 2025 to 20 MAR 2025

EMERG SAFE ALT 100 NM 16,600



CATEGORY	A	B	C	D	E
S-32 *	6080-1		530	(600-1)	
<b>☐</b> CIRCLING **	6080-1	530 (600-1)	6080-1½ 530 (600-1½)	6100-2	550 (600-2)

TONOPAH, NEVADA  
Amdt 2 09JAN14

37°47'N - 116°47'W

TONOPAH TEST RANGE (KTNX)

# VOR/DME or TACAN RWY 32