

RNAV (GPS) RWY 23

APCH CRS	Rwy Idg	5018
230°	TDZE	34
	Arprt Elev	41

[USA]

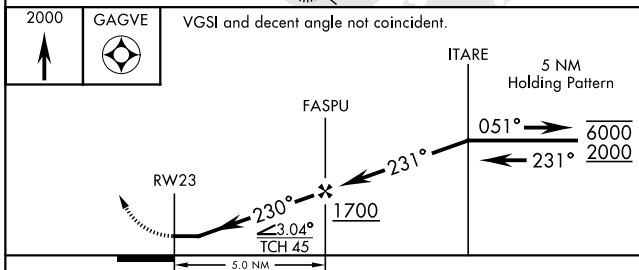
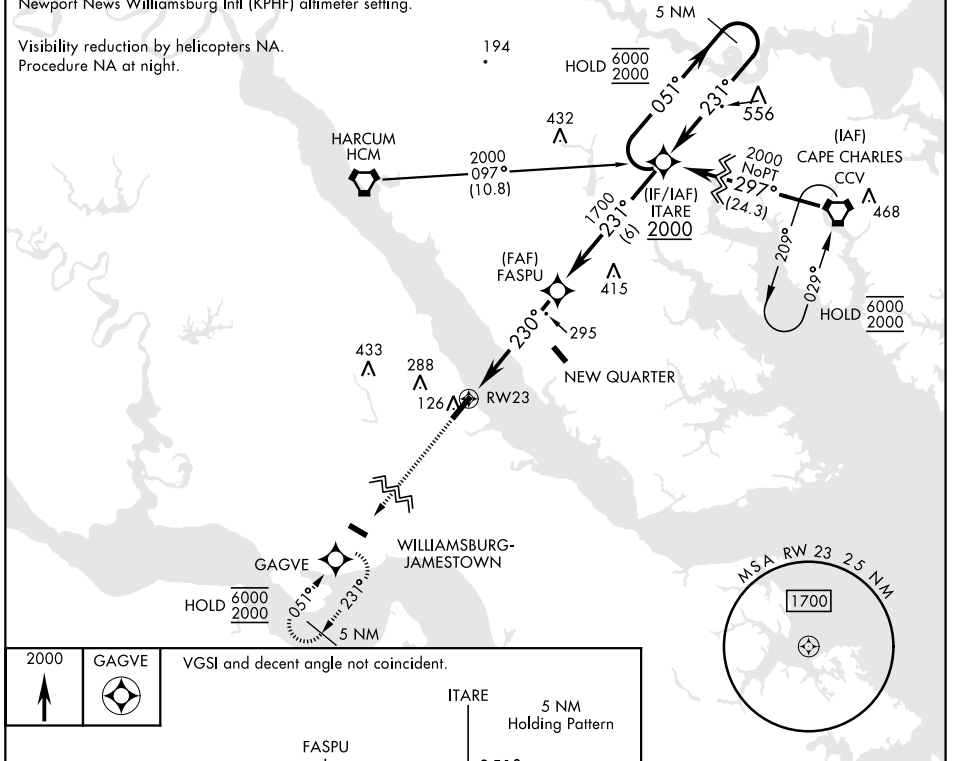
CAMP PEARY LNDG STRIP (KW94)

RNP APCH - GPS	Available Type Unknown	MISSED APPROACH: Climb to 2000 direct GAGVE and hold.
----------------	---------------------------	---

WILLIAMSBURG-JAMESTOWN AWOS-3 120.625	NORFOLK APP CON 125.7 335.625
---	---

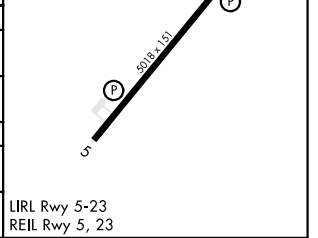
When primary altimeter setting (KJGG) not received, use Newport News Williamsburg Intl (KPHF) altimeter setting.

Visibility reduction by helicopters NA.
Procedure NA at night.



ELEV	41	TDZE	34
Rwy 05-23 Lead-In SFL.			230°

CATEGORY	A	B	C	D
LNVA MDA	560-1	526 (600-1)	560-1½	526 (600-1½)
C CIRCLING	560-1 519 (600-1)	620-1 579 (600-1)	620-1½ 579 (600-1½)	760-2¼ 719 (800-2¼)
NEWPORT NEWS / WILLIAMSBURG INTL ALTIMETER SETTING MINIMUMS				
LNVA MDA	580-1	546 (600-1)	580-1½	546 (600-1½)
C CIRCLING	580-1 539 (600-1)	620-1 579 (600-1)	620-1½ 579 (600-1½)	780-2¼ 739 (800-2¼)



WILLIAMSBURG, VIRGINIA 37°18'N-76°38'W CAMP PEARY LNDG STRIP (KW94)

Amtd 1 02NOV23

RNAV (GPS) RWY 23

NE-3, 20 FEB 2025 to 20 MAR 2025

NE-3, 20 FEB 2025 to 20 MAR 2025