


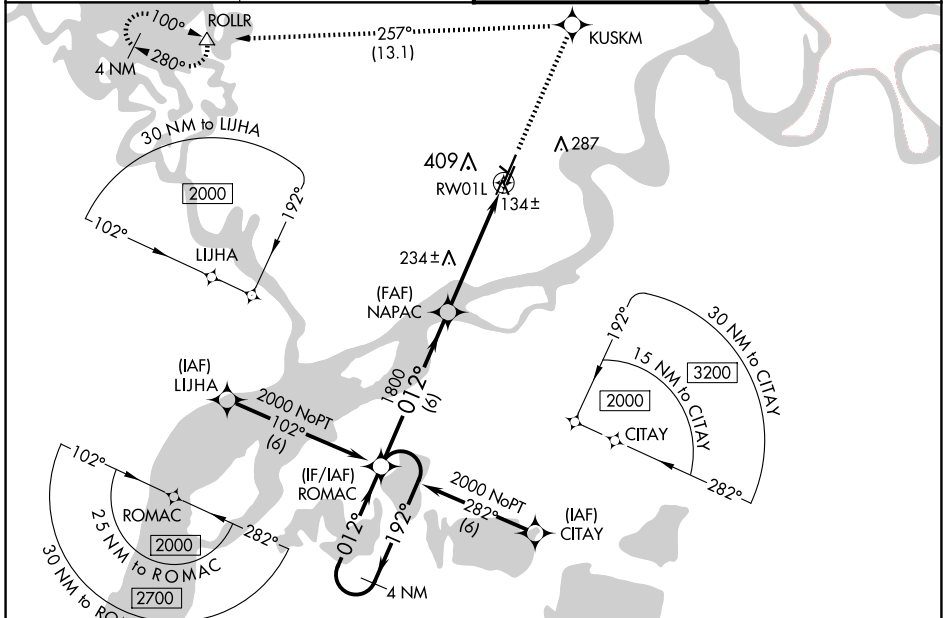
WAAS CH 42707 W01A	APP CRS 012°	Rwy Idg 6400 TDZE 127 Apt Elev 129
--	------------------------	---

RNAV (GPS) RWY 1L

BETHEL (BET)(PABE)

<p>▽ For uncompensated Baro-VNAV systems, LNAV/VNAV NA below -25°C (-13°F) or above 54°C (130°F). Circling NA west of Rwy 1L-19R. DME/DME RNP-0.3 NA. For inop ALS, increase LNAV Cat C/D visibility to RVR 6000.</p>	<p>MALSR</p> 	<p>MISSED APPROACH: Climb to 2000 direct KUSKM and left turn on track 257° to ROLLR and hold.</p>
--	--	---

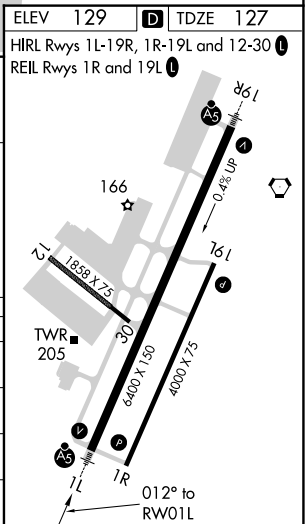
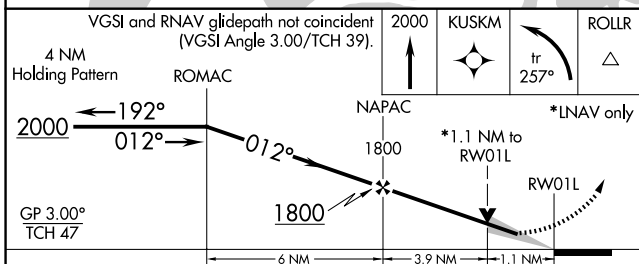
<p>ATIS 119.8</p>	<p>ANCHORAGE CENTER 125.2 372.0</p>	<p>BETHEL TOWER ★ 118.7 (CTAF) 0</p>	<p>GND CON 121.7</p>
------------------------------	--	---	---------------------------------



AK, 20 FEB 2025 to 17 APR 2025

AK, 20 FEB 2025 to 17 APR 2025

ELEV 129	TDZE 127
HIRL Rwys 1L-19R, 1R-19L and 12-30	
REIL Rwys 1R and 19L	



CATEGORY	A	B	C	D
LPV DA		377/24	250 (300-½)	
LNAV/VNAV DA		555/50	428 (500-1)	
LNAV MDA	500/24	373 (400-½)	500/50	373 (400-1)
CIRCLING	500-1	600-1	600-1½	680-2
	371 (400-1)	471 (500-1)	471 (500-1½)	551 (600-2)