

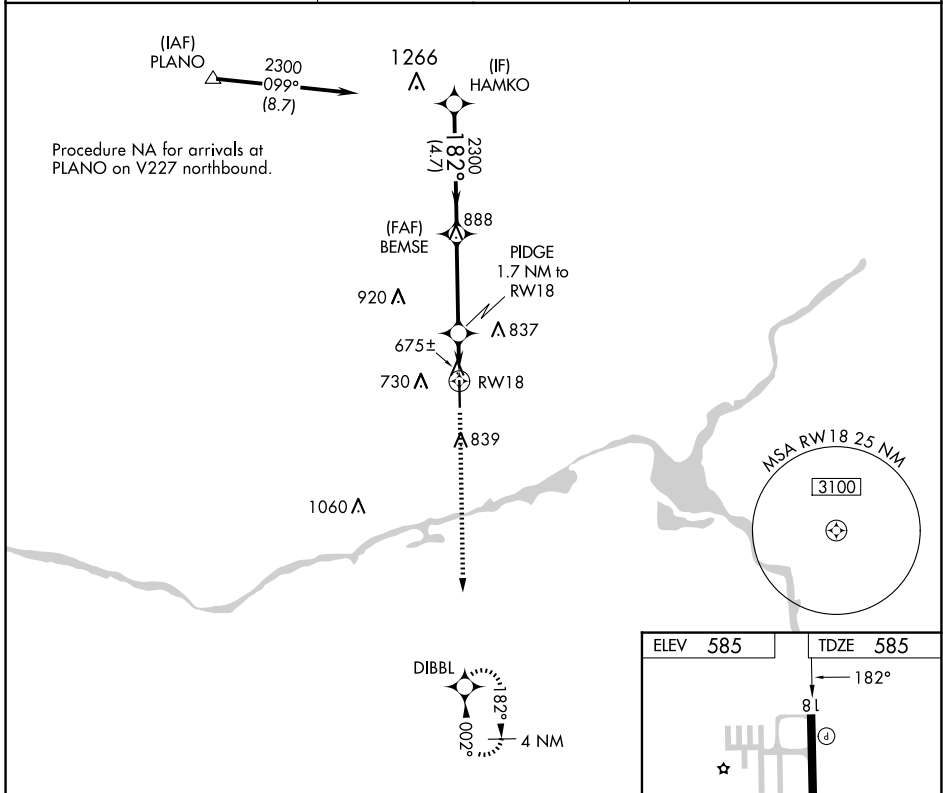
APP CRS	Rwy Idg	5501
182°	TDZE	585
	Apt Elev	585

RNAV (GPS) RWY 18

MORRIS MUNI/JAMES R WASHBURN FLD (C09)

RNP APCH.	<p>▼ Rwy 18 helicopter visibility reduction below 1 SM NA. When local altimeter setting not received, use Joliet altimeter setting and increase all MDA 40 feet, and increase LNAV Cat C visibility 1/8 mile. Straight-in, Circling Rwy 18 NA at night.</p>	<p>▲ MISSED APPROACH: Climb to 2200 direct DIBBL and hold.</p>
-----------	---	--

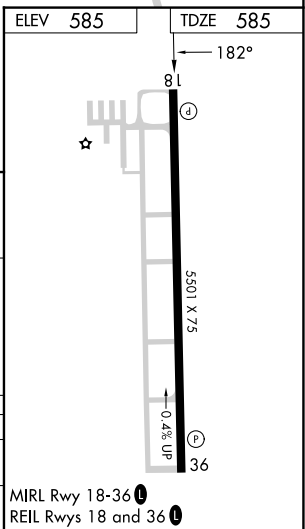
AWOS-3 118.175	CHICAGO APP CON 119.35 354.075	UNICOM 122.8 (CTAF) 0
--------------------------	--	---------------------------------



VGSI and descent angles not coincident (VGSI Angle 3.00/TCH 44).

HAMKO	BEMSE	PIDGE 1.7 NM to RW18	RW18
2300	2300	1160	
4.7 NM	3.6 NM	1.7 NM	
182°	3.00° TCH 40		
2200	DIBBL		

CATEGORY	A	B	C	D
LNAV MDA	940-1	355 (400-1)		NA
☐ CIRCLING	980-1 395 (400-1)	1140-1 555 (600-1)	1140-1½ 555 (600-1½)	NA



EC-3, 20 FEB 2025 to 20 MAR 2025

EC-3, 20 FEB 2025 to 20 MAR 2025