

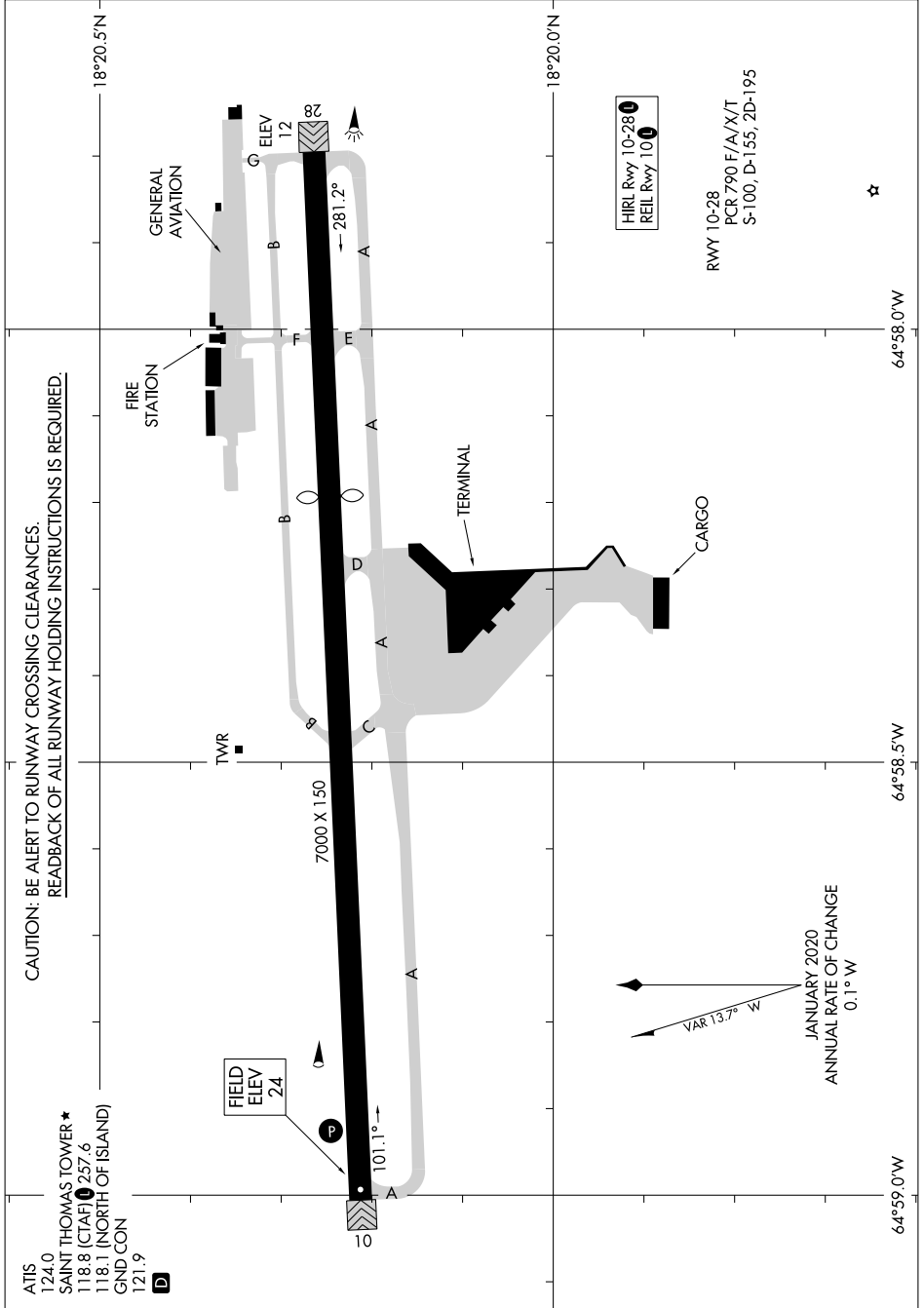
24305

AIRPORT DIAGRAM

AL-5005 (FAA)

CYRILE KING (STT)
CHARLOTTE AMALIE, VIRGIN ISLANDS

SE-3, 20 FEB 2025 to 20 MAR 2025



CAUTION: BE ALERT TO RUNWAY CROSSING CLEARANCES.
REARBACK OF ALL RUNWAY HOLDING INSTRUCTIONS IS REQUIRED.

ATIS 124.0
 SAINT THOMAS TOWER ★
 118.8 (CTAF) 257.6
 118.1 (NORTH OF ISLAND)
 GND CON 121.9
 D

HIRL Rwy 10-28
 REIL Rwy 10

RWY 10-28
 PCR 790 F/A/X/T
 S-100, D-155, 2D-195

VAR 13.7° W
 JANUARY 2020
 ANNUAL RATE OF CHANGE
 0.1° W

AIRPORT DIAGRAM

24305

CHARLOTTE AMALIE, VIRGIN ISLANDS
CYRILE KING (STT)

SE-3, 20 FEB 2025 to 20 MAR 2025