

APP CRS 100°	Rwy ldg 6892 TDZE 24 Apt Elev 24
------------------------	---

RNAV (GPS) RWY 10

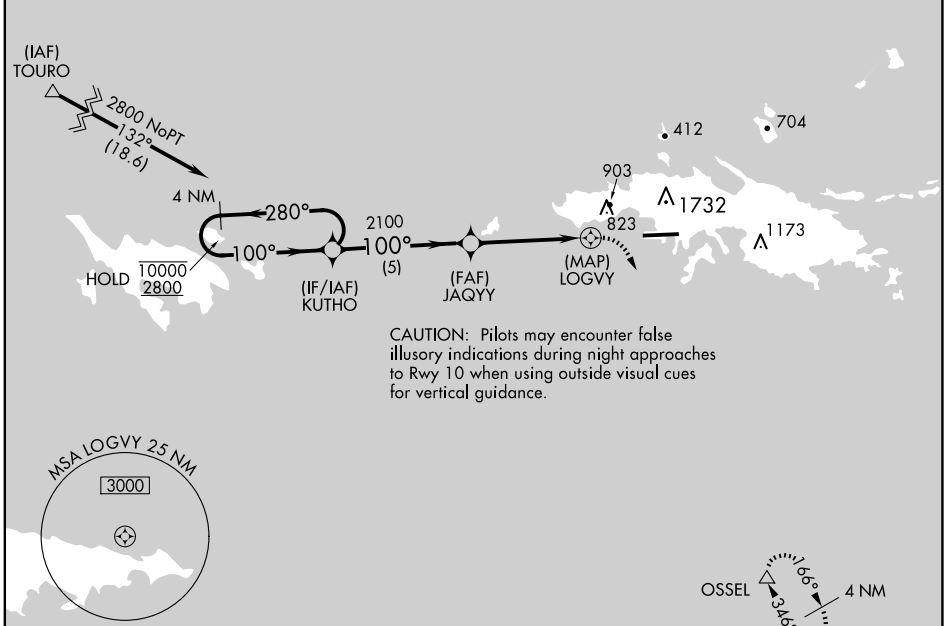
CYRIL E KING (STT)(TIST)

RNP APCH - GPS.

▽ Circling NA at night. Circling NA north of Rwy 10-28.
▲ Cat A and B missed approach climb gradient is standard.

MISSED APPROACH: Climbing right turn to 2800 direct OSSEL and hold.
 * Missed approach requires minimum climb of 411 feet per NM to 1900 for Category C/D aircraft.

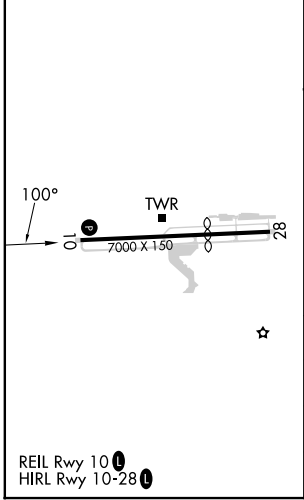
ATIS 124.0	SAN JUAN CENTER 128.65 279.6	ST. THOMAS TOWER ★ 118.8 (CTAF) 0 257.6 118.1 (NORTH OF ISLAND)	GND CON 121.9	UNICOM 122.95
----------------------	--	--	-------------------------	-------------------------



SE-3, 20 FEB 2025 to 20 MAR 2025

SE-3, 20 FEB 2025 to 20 MAR 2025

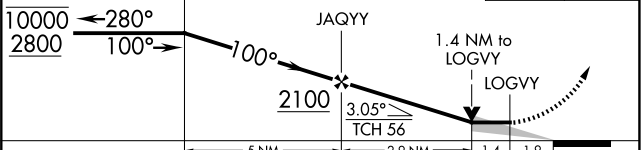
ELEV	24	D	TDZE	24
------	----	----------	------	----



4 NM Holding Pattern

VGSI and descent angles not coincident (VGSI Angle 3.00/TCH 71).

2800 OSSEL **△**



CATEGORY	A	B	C	D
LNAV MDA*	NA		1180-3	1156 (1200-3)
LNAV MDA	1180-2½	1156 (1200-2½)	1560-3	1536 (1600-3)
CIRCLING	1180-2½	1156 (1200-2½)	1560-3	1536 (1600-3)