

VOR/DME STT	APP CRS	Rwy Idg TDZE	N/A
108.6	181°		N/A
Chan 23		Apt Elev	24

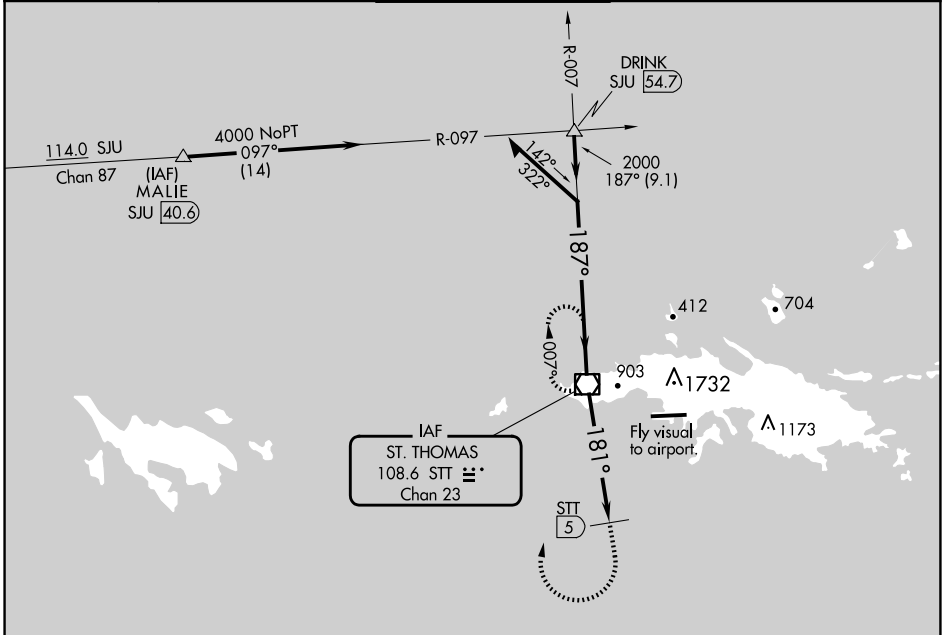
VOR-A

CYRIL E KING (STT)(TIST)

**CAUTION:** High terrain north of Rwy 10-28 extended. Circling NA north of Rwy 10-28. Procedure NA when control tower not in operation. Procedure NA at night.

**MISSED APPROACH:** If unable to proceed visually to airport upon descent to 1160, climb to 2800 via heading 180°, then right turn direct STT VOR/DME and hold.

ATIS <b>124.0</b>	SAN JUAN CENTER <b>128.65 279.6</b>	ST. THOMAS TOWER ★ <b>118.8 (CTAF) 257.6</b> <b>118.1 (NORTH OF ISLAND)</b>	GND CON <b>121.9</b>	UNICOM <b>122.95</b>
----------------------	--	---	-------------------------	-------------------------



SE-3, 20 FEB 2025 to 20 MAR 2025

SE-3, 20 FEB 2025 to 20 MAR 2025



Remain within 10 NM	STT VOR/DME	2800	STT
2800	007°	hdg 180°	☐
2800	187°	STT	Fly visual to airport.
2000	181°	5 NM	

CATEGORY	A	B	C	D
CIRCLING	1160-3	1136 (1200-3)	1480-3	1456 (1500-3)