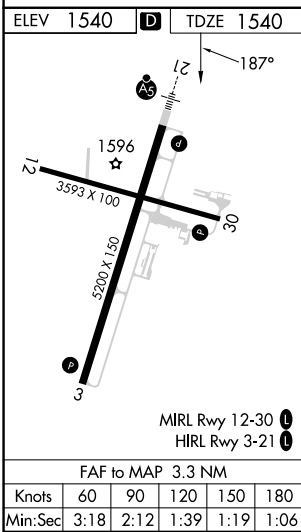
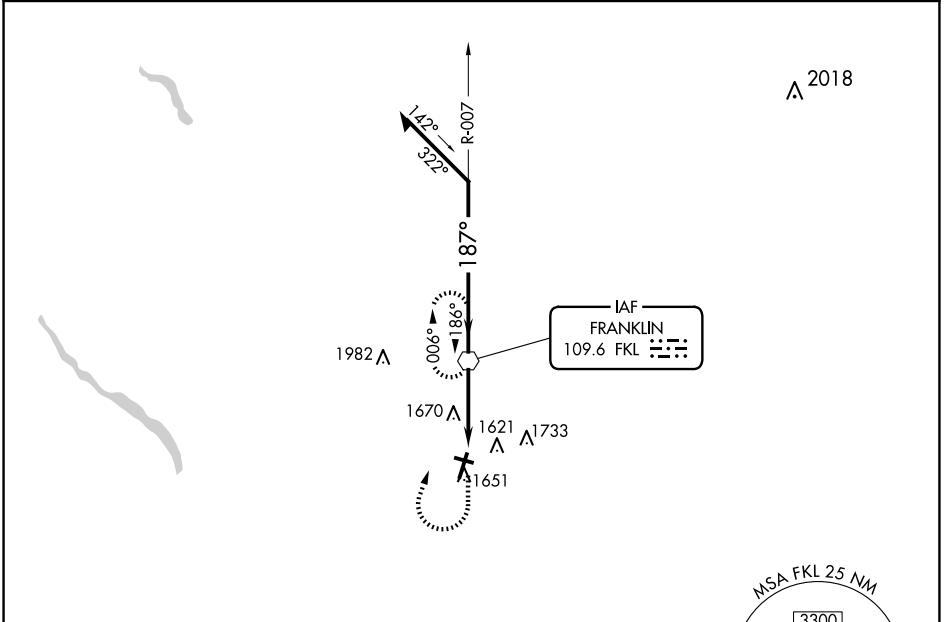


VOR FKL 109.6	APP CRS 187°	Rwy ldg 5200
		TDZE 1540
		Apt Elev 1540

VOR RWY 21

VENANGO RGNL (F'KL)

<p>Inop table does not apply. When local altimeter setting not received, use Port Meadville altimeter setting and increase all MDA 80 feet and S-21 Cats C/D visibility 3/8 mile. Circling Rwy 12 NA at night. Rwy 12 helicopter visibility reduction below 1 SM NA.</p>	<p>MALSIR</p>	<p>MISSED APPROACH: Climb to 2200, then climbing right turn to 3300 direct FKL VOR and hold.</p>	
			<p>AWOS-3PT 118.175</p>



2200	3300	FKL		
		FKL VOR	Remain within 10 NM	
CATEGORY	A	B	C	D
S-21	1920-1 380 (400-1)			
CIRCLING	1960-1 420 (500-1)	2000-1 460 (500-1)	2040-1½ 500 (500-1½)	2100-2 560 (600-2)

NE-4, 20 FEB 2025 to 20 MAR 2025

NE-4, 20 FEB 2025 to 20 MAR 2025