

GRAND FORKS, NORTH DAKOTA

TACAN RWY 36

TACAN RDR Chan 111	APCH CRS 351°	Rwy Idg 12,351	TDZE 911
		Arprt Elev 911	

AL-5010 (USAF)

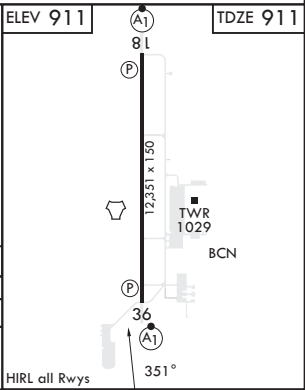
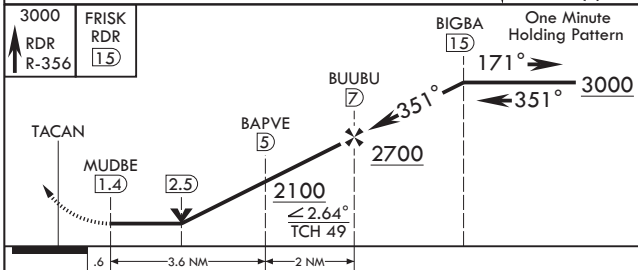
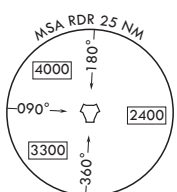
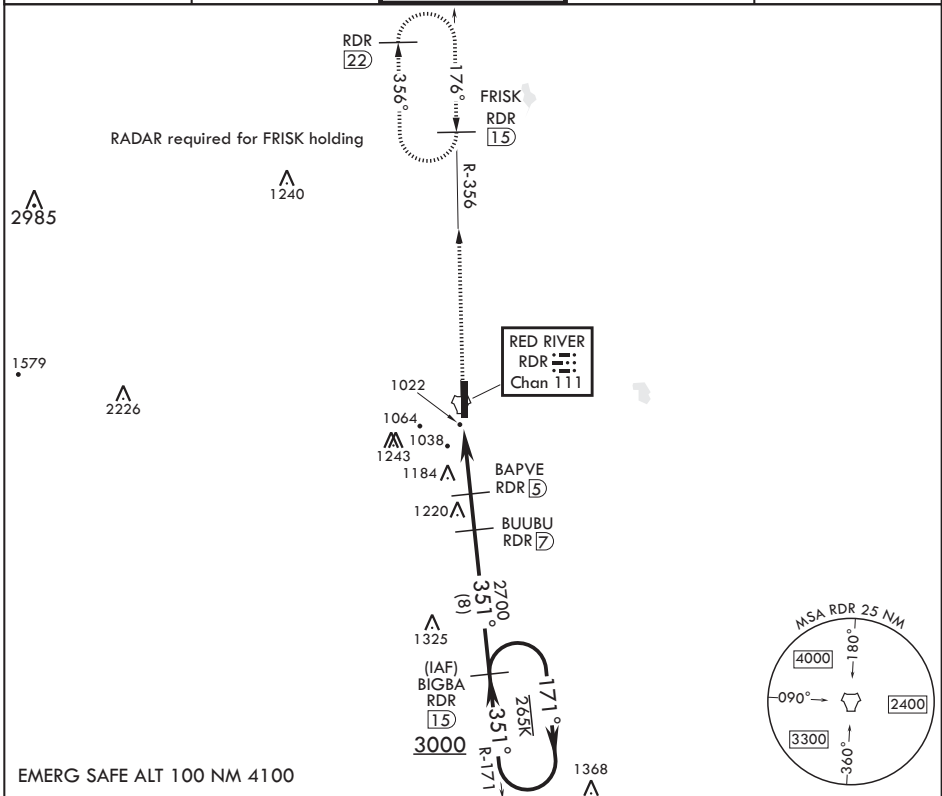
GRAND FORKS AFB (KRDR)

* When ALS inop, increase CAT AB RVR to 55, vis to 1 mile, CAT CDE vis to 1 1/2 miles.
 ** Circling E of Rwy 18-36 not authorized.



MISSED APPROACH: Climb to 3000 on RDR TACAN R-356 to FRISK and hold.

ATIS 273.45	APP CON 118.1 318.1	RED RIVER TOWER 124.9 349.0	GND CON 119.15 275.8	CLNC DEL 119.15 360.7
----------------	------------------------	--------------------------------	-------------------------	--------------------------



CATEGORY	A	B	C	D	E
S-36*	1440/24 529 (600-½)		1440/55 529 (600-1)		
CIRCLING**	1440-1 529 (600-1)		1440-1½ 529 (600-1½)	1540-2 629 (700-2)	1560-2¼ 649 (700-2¼)

GRAND FORKS, NORTH DAKOTA

47°58'N - 97°24'W

GRAND FORKS AFB (KRDR)

Orig 10AUG23

TACAN RWY 36

NC-1, 20 FEB 2025 to 20 MAR 2025

NC-1, 20 FEB 2025 to 20 MAR 2025