

MINOT, NORTH DAKOTA

# COPTER RNAV (GPS) RWY 12

WAAS CH 71280 W12A	APCH CRS 118°	Rwy ldg 13,198	TDZE 1666
		Arprt Elev 1666	

AL-5013 (USAF)

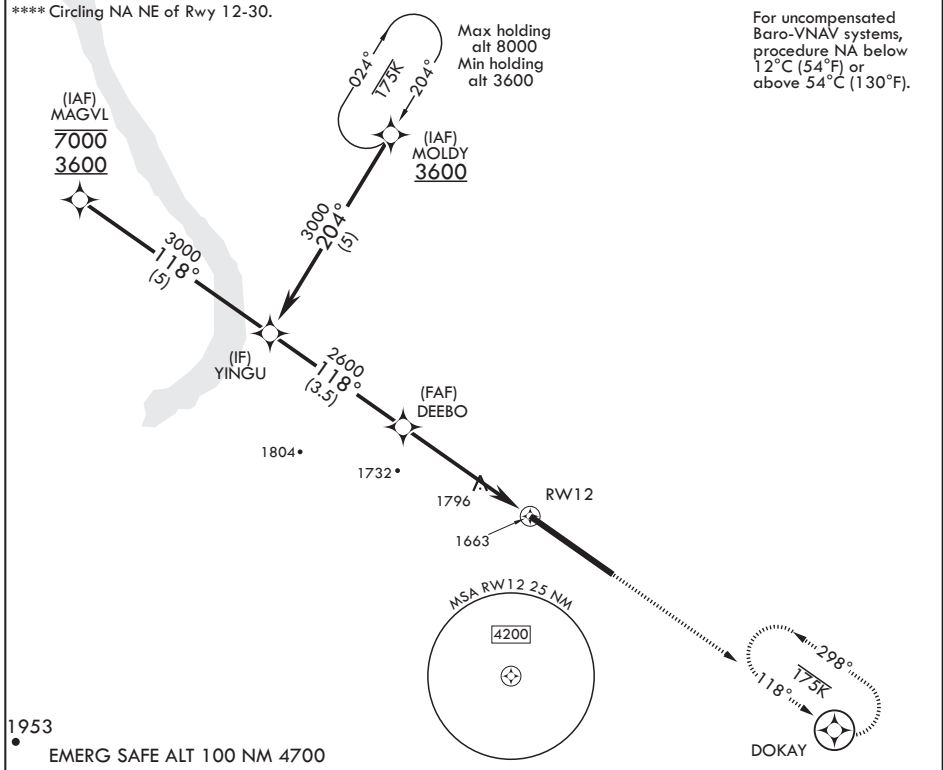
MINOT AFB (KMIB)

\* When ALS inop, increase CAT A RVR to 40, vis to 3/4 mile.  
 \*\* When ALS inop, increase CAT A vis to 1 5/8 miles.  
 \*\*\* When ALS inop, increase CAT A RVR to 55, vis to 1 mile.

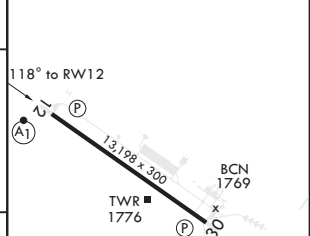
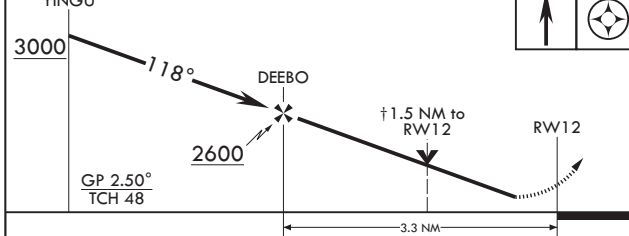


MISSED APPROACH: Climb to 3600 direct DOKAY and hold.

ATIS * 278.8	APP CON 119.6 363.8	TOWER * 120.65 253.5	GND CON 134.0 275.8	CLNC DEL 326.2
-----------------	------------------------	-------------------------	------------------------	-------------------



YINGU 3000 †LNAV only 3600 DOKAY ELEV 1666 TDZE 1666



CATEGORY	COPTER	
LPV DA*	1866/24	200 (200-1/4)
LNAV/VNAV DA**	2077/60	411 (500-1 1/2)
LNAV MDA***	2100/24	434 (500-1/2)
<b>C</b> CIRCLING****	2120-1	454 (500-1)

HIRL all Rwys

MINOT, NORTH DAKOTA

48°25'N - 101°21'W

MINOT AFB (KMIB)

Orig 19JUL18

# COPTER RNAV (GPS) RWY 12

NC-1, 20 FEB 2025 to 20 MAR 2025

NC-1, 20 FEB 2025 to 20 MAR 2025