

# COPTER TACAN 125°

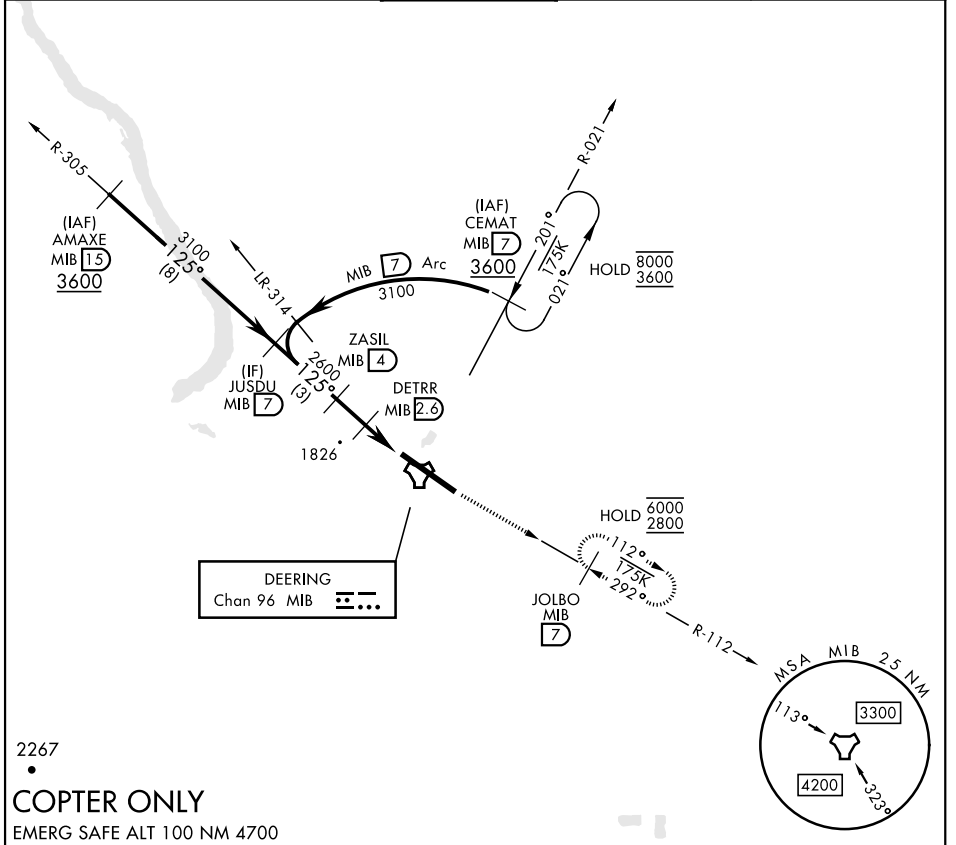
TACAN MIB Chan <b>96</b>	APCH CRS <b>125°</b>	Rwy ldg <b>13,198</b> TDZE <b>1666</b> Arpt Elev <b>1666</b>
-----------------------------	-------------------------	--

[USAF]

MINOT AFB (KMIB)

* When ALS inop, increase RVR to 28 and vis to ½ mile.	ALSF-1 	MISSED APPROACH: Climb to 3600 via MIB TACAN R-112 direct JOLBO and hold.
--	------------	---

ATIS ★ <b>278.8</b>	MINOT APP CON <b>119.6 363.8</b>	MINOT TOWER ★ <b>120.65 253.5</b>	GND CON <b>134.0 275.8</b>	CLNC DEL <b>326.2</b>
------------------------	-------------------------------------	--------------------------------------	-------------------------------	--------------------------



NC-1, 20 FEB 2025 to 20 MAR 2025

NC-1, 20 FEB 2025 to 20 MAR 2025

2267

## COPTER ONLY

EMERG SAFE ALT 100 NM 4700

JUSDU MIB 7	ZASIL MIB 4	DETRR MIB 2.6	JOLBO MIB 7	ELEV 1666	TDZE 1666
3100	2600	2200	3600		
125°			MIB TACAN	125°	
2.65° TCH 47			ZELOL MIB 1.1		
1.4 NM			0.3	13,198 x 300	
CATEGORY	COPTER				
H-125°*	2080/12	414	(500-¼)	HIRL Rwy 12-30	

# COPTER TACAN 125°