

MINOT, NORTH DAKOTA

RNAV (GPS) Y RWY 12

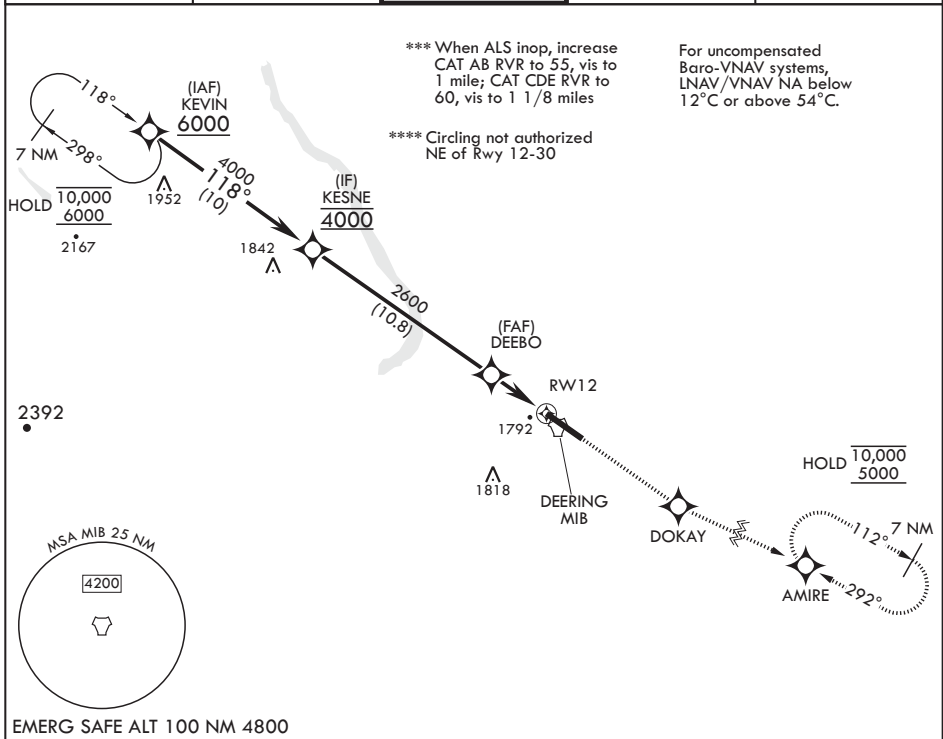
WAAS CH 51051 W12B	APCH CRS 118°	Rwy ldg THRE 13,198 Arpt Elev 1666
--------------------------	------------------	--

AL-5013 (USAF)

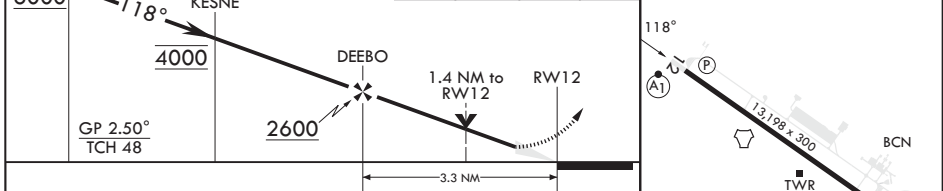
MINOT AFB (KMIB)

RNP APCH-GPS	ALSF-1	MISSED APPROACH: Climb to 5000 direct DOKAY, track 108° to AMIRE and hold.
<p>▼ * When ALS inop, increase RVR to 40, vis to 3/4 mile. ** When ALS inop, increase RVR to 60, vis to 1 1/8 miles.</p>		

ATIS ★ 278.8	APP CON 119.6 363.8	TOWER ★ 120.65 253.5	GND CON 134.0 275.8	CLNC DEL 326.2
-----------------	------------------------	-------------------------	------------------------	-------------------



KEVIN 6000	KESNE 4000	DEEBO 2600	RWY 12	AMIRE ELEV 1666	THRE 1666
118°		1.4 NM to RWY 12		tr 108°	
GP 2.50° TCH 48		3.3 NM			



CATEGORY	A	B	C	D	E
LPV DA*	1866/24		200	(200-1/2)	
LNAV/VNAV DA**	2057/35		391	(400-5/8)	
LNAV MDA***	2080/24 414 (500-1/2)		2080/40	414 (500-3/4)	
☐ CIRCLING****	2120-1 454 (500-1)	2140-1 474 (500-1)	2180-1 1/2 514 (600-1/2)	2320-2 654 (700-2)	2320-2 1/4 654 (700-2 1/4)

HIRL all Rwys

MINOT, NORTH DAKOTA 48°25'N - 101°21'W MINOT AFB (KMIB)

RNAV (GPS) Y RWY 12

Orig 15JUN23

NC-1, 20 FEB 2025 to 20 MAR 2025

NC-1, 20 FEB 2025 to 20 MAR 2025