

MINOT, NORTH DAKOTA

RNAV (GPS) Y RWY 30

WAAS CH 47084 W30B	APCH CRS 298°	Rwy ldg TDZE Arprt Elev	13,198 1646 1666
--	-------------------------	-------------------------------	---

AL-5013 (USAF)

MINOT AFB (KMIB)

RNP APCH - GPS

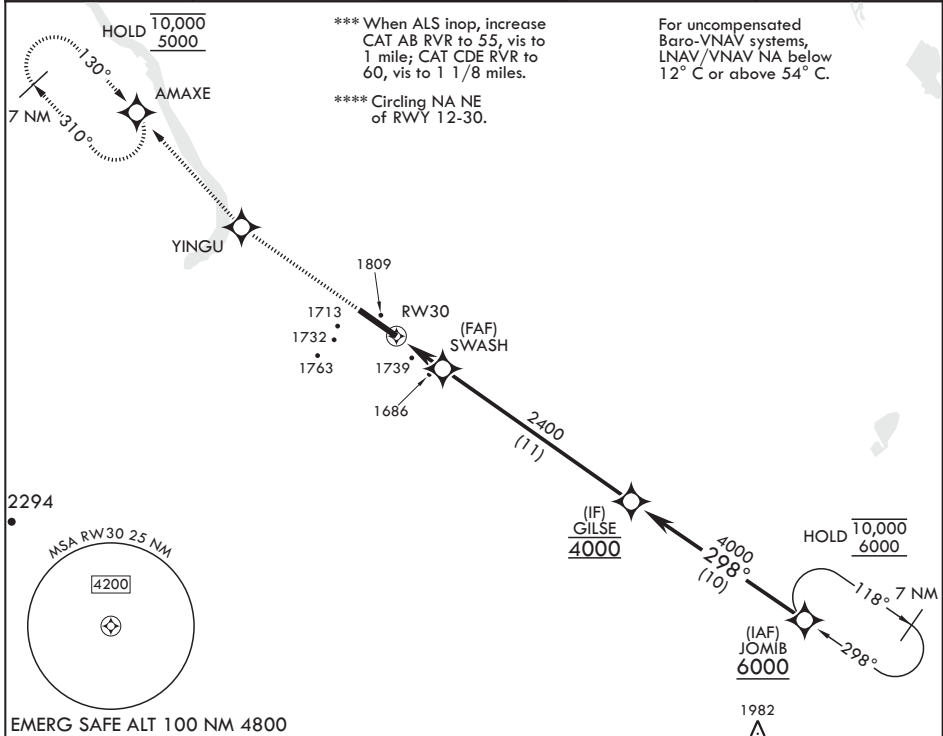
ALSF-1

MISSED APPROACH: Climb to 5000 direct YINGU, track 310° to AMAXE and hold.

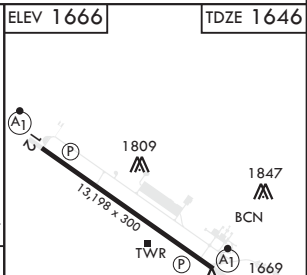
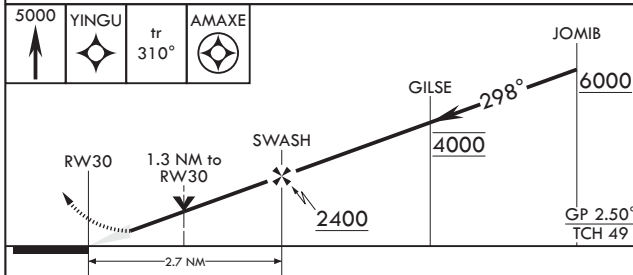
▼ * When ALS inop, increase RVR to 40, vis to 3/4 mile.
** When ALS inop, increase RVR to 60, vis to 1 1/8 miles.



ATIS* 278.8	APP CON 119.6 363.8	TOWER* 120.65 253.5	GND CON 134.0 275.8	CLNC DEL 326.2
-----------------------	-------------------------------	-------------------------------	-------------------------------	--------------------------



EMERG SAFE ALT 100 NM 4800



CATEGORY	A	B	C	D	E
LPV DA*	1846/24		200	(200-1/2)	
LNAV/VNAV DA**	2027/35		381	(400-5/8)	
LNAV MDA***	2040/24 394 (400-1/2)		2040/40	394 (400-3/4)	
CIRCLING****	2120-1	2140-1	2180-1 1/2	2320-2	2320-2 1/4
	454	474	514	654	654
	(500-1)	(500-1)	(600-1 1/2)	(700-2)	(700-2 1/4)

HIRL all Rwys

MINOT, NORTH DAKOTA

48°25'N - 101°21'W

MINOT AFB (KMIB)

Orig 15JUN23

RNAV (GPS) Y RWY 30

NC-1, 20 FEB 2025 to 20 MAR 2025

NC-1, 20 FEB 2025 to 20 MAR 2025