

LOC I-ANB 111.5	APP CRS 052°	Rwy Idg 7000
		TDZE 595
		Apt Elev 612

ILS Z or LOC Z RWY 5

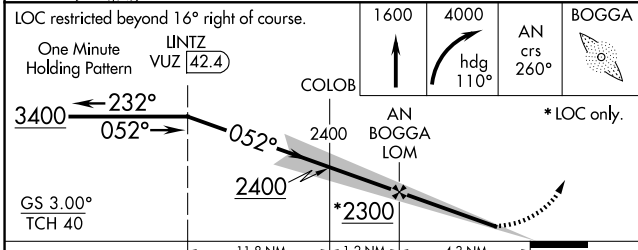
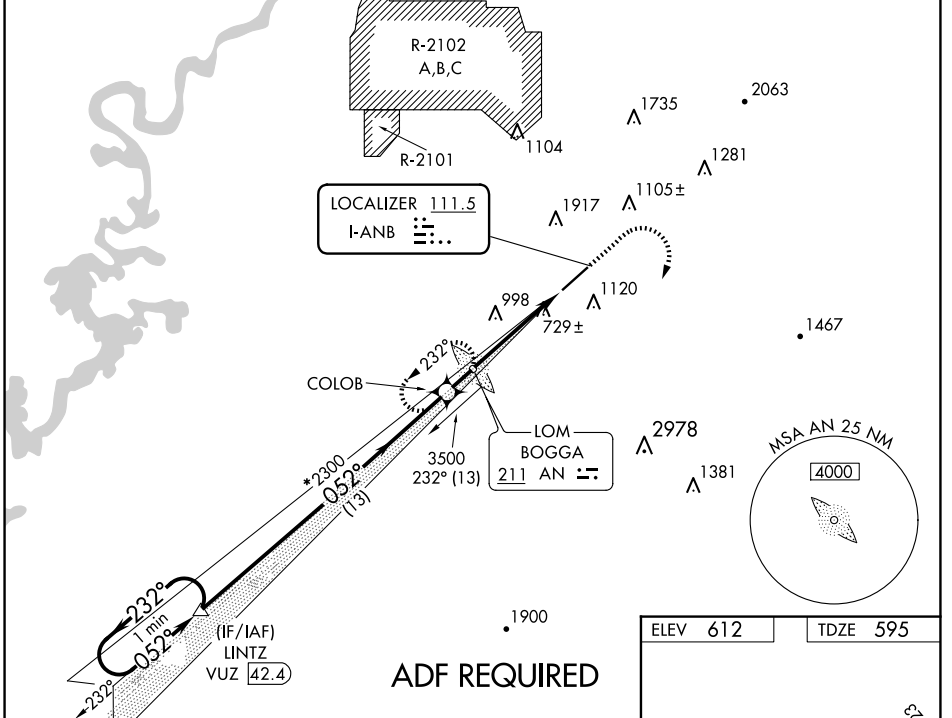
ANNISTON RGNL (ANB)

⚠ Circling NA north of Rwy 5-23. ADF required. When local altimeter setting not received, use Gadsden altimeter setting: increase DA to 975 and all visibilities ¼ SM; all MDAs 80 feet, and all Cat C visibilities ½ SM. For inop ALS increase S-ILS 5 all Cats visibility to 1 SM. For inop ALS when using Gadsden altimeter setting, increase S-ILS 5 all Cats visibility to 1¼ SM.

MALSRL

MISSED APPROACH: Climb to 1600 then climbing right turn to 4000 on heading 110° then on BOGGA LOM 260° course to BOGGA LOM and hold.

ASOS 119.675	BIRMINGHAM APP CON 132.15 285.45	CTAF 123.6	UNICOM 123.0
------------------------	--	----------------------	------------------------



ELEV 612	TDZE 595
----------	----------

FAF to MAP 4.3 NM
Knots: 60 90 120 150 180
Min:Sec: 4:18 2:52 2:09 1:43 1:26

CATEGORY	A	B	C	D
S-ILS 5	909-½ 314 (300-½)			
S-LOC 5	1120-½ 525 (600-½)	1120-1 525 (600-1)		NA
C CIRCLING	1420-1 808 (900-1)	1420-2¼ 808 (900-2¼)		1820-3 1208 (1300-3)

SE-4, 20 FEB 2025 to 20 MAR 2025

SE-4, 20 FEB 2025 to 20 MAR 2025