

WAAS CH <b>40330</b> <b>W28A</b>	APP CRS <b>285°</b>	Rwy Idg <b>5018</b> TDZE <b>50</b> Apt Elev <b>52</b>
--	------------------------	---

# RNAV (GPS) RWY 28L

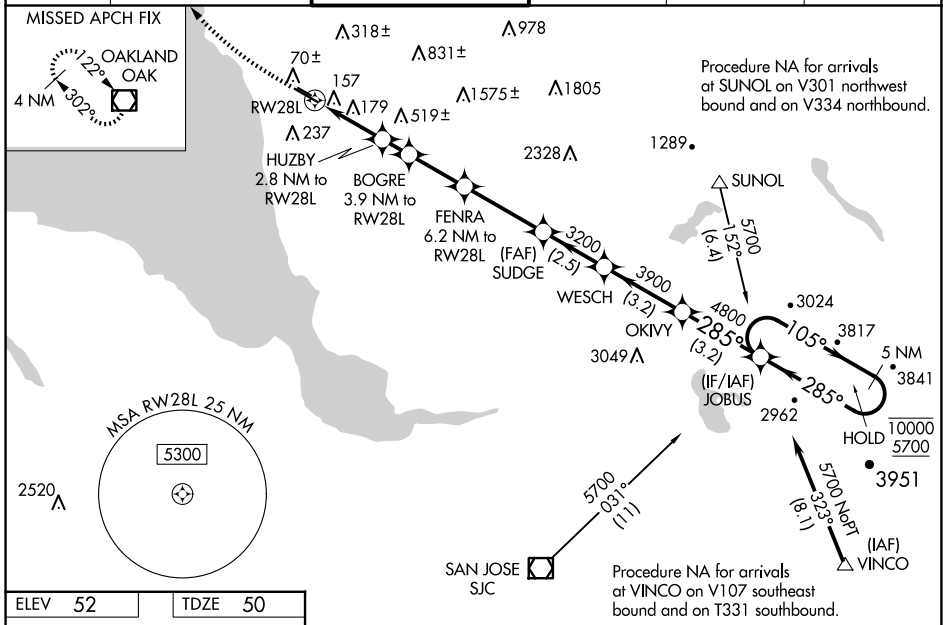
HAYWARD EXEC (HWD)

RNP APCH - GPS.

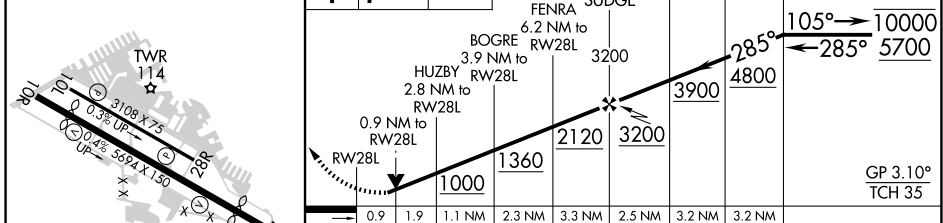
Baro-VNAV NA. Circling Rwy 10L, 28R NA at night. Rwy 28L helicopter visibility reduction below 3/4 SM NA. When local altimeter setting not received, use OAK altimeter setting and increase LPV DA to 370 feet; increase LNAV/VNAV DA to 461 feet; increase all MDAs 40 feet and LNAV visibility Cat C/D 1/4 SM, and Circling visibility Cat D 1/4 SM. Circling NA north of Rwy 10L-28R.

MISSED APPROACH: Climb to 600 then climbing right turn to 2100 direct OAK VOR/DME and hold.

ATIS <b>126.7</b>	NORCAL APP CON <b>124.4 351.8</b>	HAYWARD TOWER* <b>120.2 (CTAF) 257.8</b>	GND CON <b>121.4</b>	CLNC DEL <b>128.05</b>	UNICOM <b>122.95</b>
----------------------	--------------------------------------	---	-------------------------	---------------------------	-------------------------



ELEV 52	TDZE 50	600	2100	OAK	VGSI and RNAV glidepath not coincident (VGSI Angle 4.00/TCH 35).
---------	---------	-----	------	-----	--



GP 3.10° TCH 35°	0.9	1.9	1.1 NM	2.3 NM	3.3 NM	2.5 NM	3.2 NM	3.2 NM	
CATEGORY	A		B		C		D		
LPV DA	348-1		298 (300-1)						
LNAV/VNAV DA	439-1 1/8		389 (400-1 1/8)						
LNAV MDA	460-1		410 (500-1)		460-1 1/8		410 (500-1 1/8)		
CIRCLING	540-1		488 (500-1)		540-1 1/2		920-2 3/4		868 (900-2 3/4)

MIRL Rwy 10R-28L  
MIRL Rwy 10L-28R  
REIL Rwy 10R and 28L

SW-2, 20 FEB 2025 to 20 MAR 2025

SW-2, 20 FEB 2025 to 20 MAR 2025