

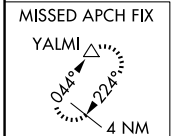
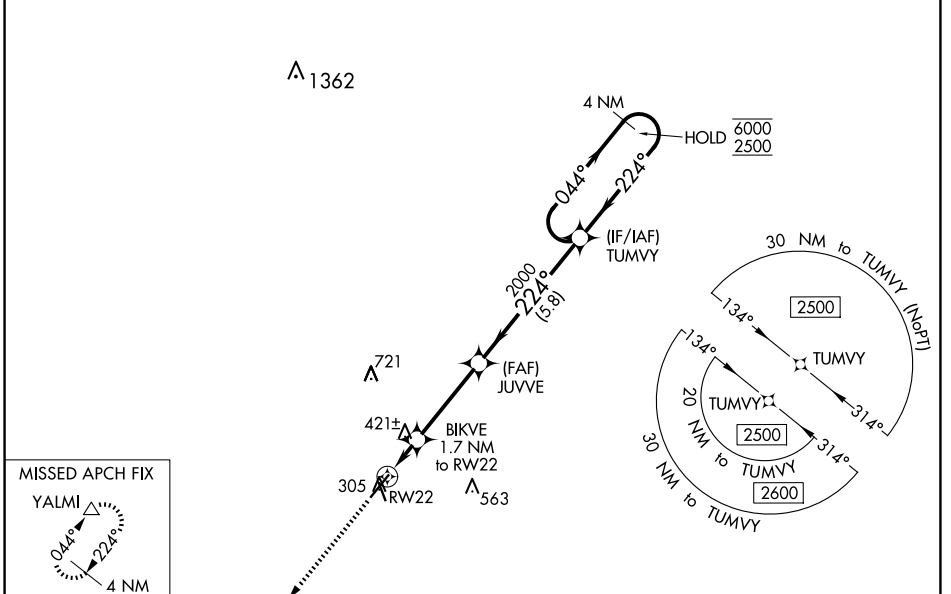
WAAS CH 93803 W22A	APP CRS 224°	Rwy Idg TDZE Apt Elev	5628 297 298
--	------------------------	-----------------------------	---

RNAV (GPS) RWY 22

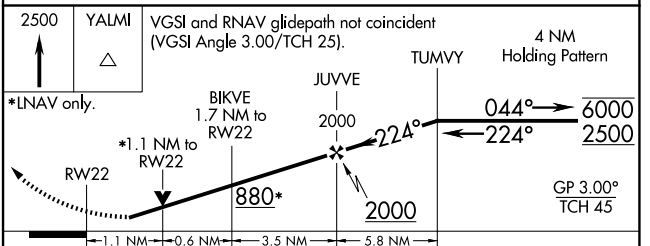
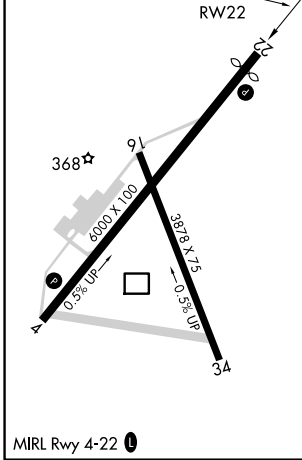
MOULTRIE MUNI (MGR)

RNP APCH.	MISSED APPROACH: Climb to 2500 direct YALMI and hold.
<p>▼ Circling Rwy 16 NA at night. ▲ Rwy 22 helicopter visibility reduction below ¾ SM NA. For uncompensated Baro-VNAV systems, LNAV/VNAV NA below -15°C or above 54°C.</p>	

AWOS-3PT 118.925	VALDOSTA APP CON ★ 126.6 285.6	UNICOM 122.8 (CTAF) 0
----------------------------	--	--



ELEV 298	D	TDZE 297
----------	----------	----------



CATEGORY	A	B	C	D
LPV DA		601-1	304 (400-1)	
LNAV/VNAV DA		569-1	272 (300-1)	
LNAV MDA	680-1	383 (400-1)	680-1½	383 (400-1½)
C CIRCLING	720-1 422 (500-1)	760-1 462 (500-1)	860-1½ 562 (600-1½)	1080-2½ 782 (800-2½)