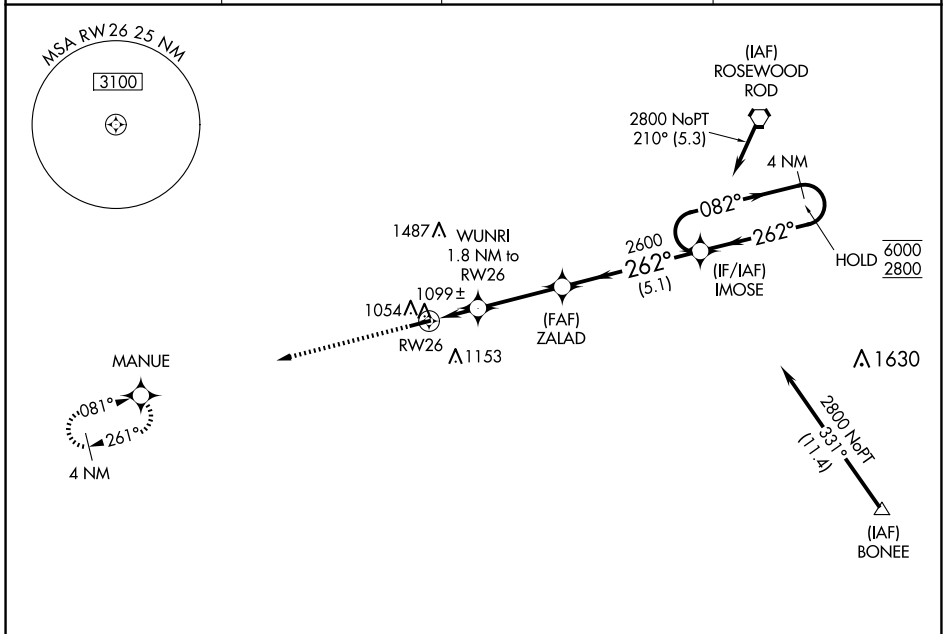


WAAS CH 86745 W26A	APP CRS 262°	Rwy Idg TDZE 986 Apt Elev 993	3998
--	------------------------	---	-------------

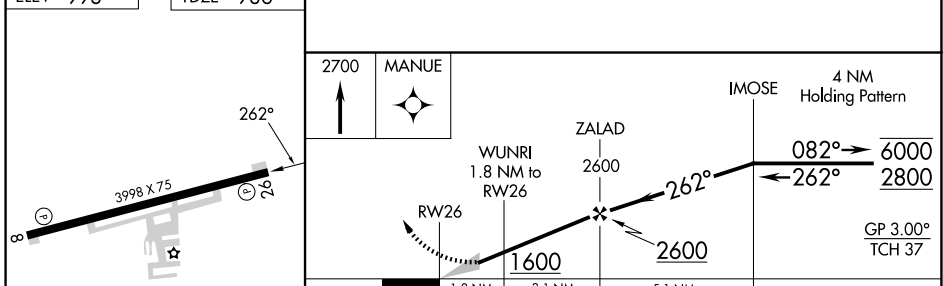
RNAV (GPS) RWY 26

PIQUA/HARTZELL FLD (I17)

RNP APCH - GPS.		MISSED APPROACH: Climb to 2700 direct MANUE and hold.	
Baro-VNAV NA. Use Versailles altimeter setting.			
DAY ASOS 125.8	VES AWOS-3PT 125.9	COLUMBUS APP CON 134.45 294.5 352.05	UNICOM 123.0 (CTAF)



ELEV 993	TDZE 986
----------	----------



	CATEGORY	A	B	C	D
LPV	DA	1213-1 227 (300-1)			NA
LNAV/VNAV	DA	1296-1 310 (400-1)			NA
LNAV	MDA	1380-1	394 (400-1)	1380-1½ 394 (400-1½)	NA
	CIRCLING	1440-1 447 (500-1)	1540-1 547 (600-1)	1560-1½ 567 (600-1½)	NA

EC-2, 20 FEB 2025 to 20 MAR 2025

EC-2, 20 FEB 2025 to 20 MAR 2025