

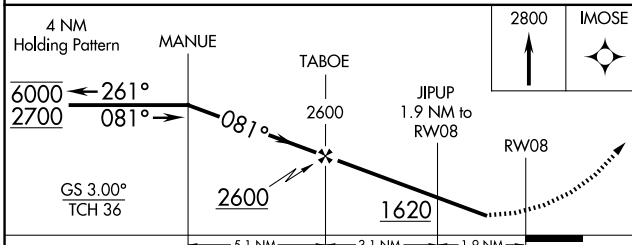
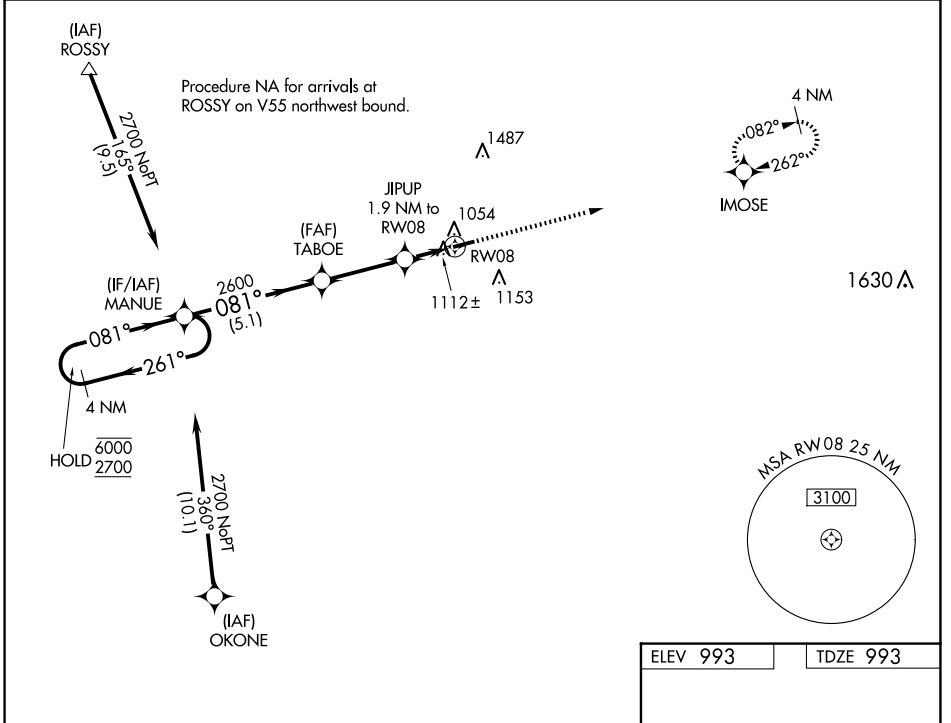
WAAS CH <b>48845</b> <b>W08A</b>	APP CRS <b>081°</b>	Rwy Idg TDZE <b>993</b> Apt Elev <b>993</b>	<b>3998</b>
--	------------------------	---	-------------

# RNAV (GPS) RWY 8

PIQUA/HARTZELL FLD (I17)

RNP APCH - GPS.	MISSED APPROACH: Climb to 2800 direct IMOSE and hold.
<p><b>V</b> Rwy 8 helicopter visibility reduction below 3/4 SM NA.</p> <p><b>A</b> NA Baro-VNAV NA. Use Versailles altimeter setting.</p>	

DAY ASOS <b>125.8</b>	VES AWOS-3PT <b>125.9</b>	COLUMBUS APP CON <b>134.45 294.5 352.05</b>	UNICOM <b>123.0</b> (CTAF) <b>0</b>
--------------------------	------------------------------	--	--



ELEV 993	TDZE 993
----------	----------

3998 X 75

081°

MIRL Rwy 8-26 **0**

REIL Rwys 8 and 26 **0**

CATEGORY	A	B	C	D
LPV DA	1322-1	329 (400-1)		NA
LNAV/VNAV DA	1400-1 1/8	407 (500-1 1/8)		NA
LNAV MDA	1400-1	407 (500-1)	1400-1 1/8 407 (500-1 1/8)	NA
<b>C</b> CIRCLING	1440-1 447 (500-1)	1540-1 547 (600-1)	1560-1 1/2 567 (600-1 1/2)	NA

EC-2, 20 FEB 2025 to 20 MAR 2025

EC-2, 20 FEB 2025 to 20 MAR 2025