

PIQUA, OHIO

AL-5022 (FAA)

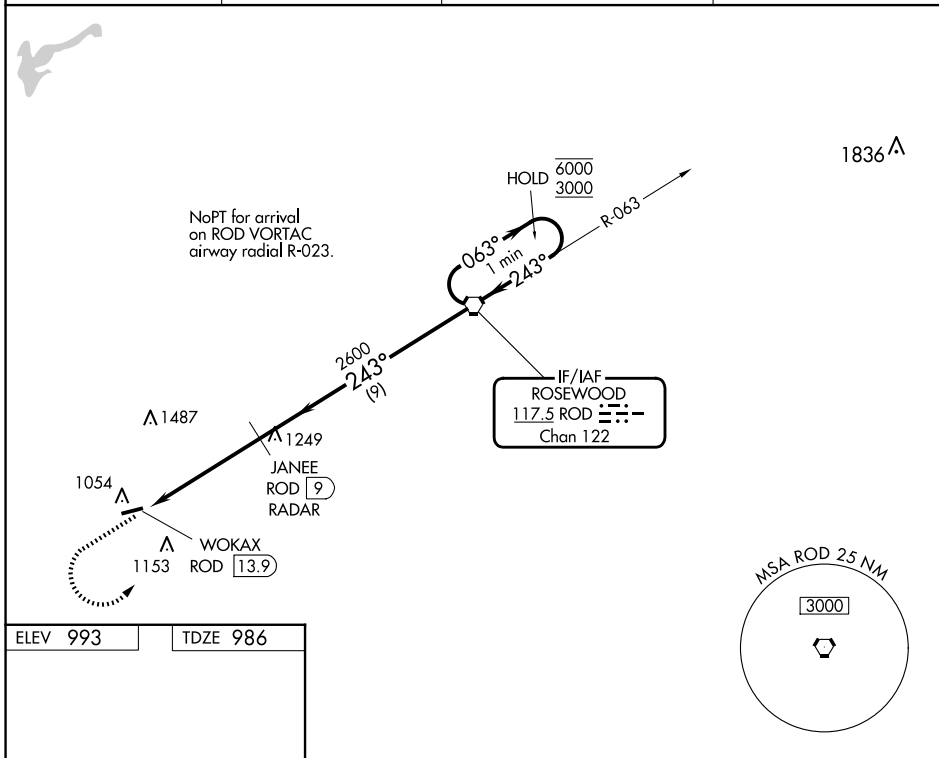
25051

VORTAC ROD 117.5 Chan 122	APP CRS 243°	Rwy Idg TDZE Apt Elev	3998 986 993
---	------------------------	-----------------------------	---

VOR RWY 26

PIQUA/HARTZELL FLD (I17)

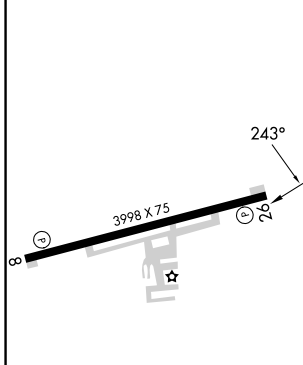
DME or RADAR required.		MISSED APPROACH: Climb to 3000 then left turn direct ROD VORTAC and hold.	
<p>▼ Rwy 26 helicopter visibility reduction below ¼ SM NA.</p> <p>▲ NA Use James M Cox Dayton Intl altimeter setting.</p>		DAY ASOS 125.8	VES AWOS-3PT 125.9
		COLUMBUS APP CON 134.45 294.5 352.05	UNICOM 123.0 (CTAF) 0



EC-2, 20 FEB 2025 to 20 MAR 2025

EC-2, 20 FEB 2025 to 20 MAR 2025

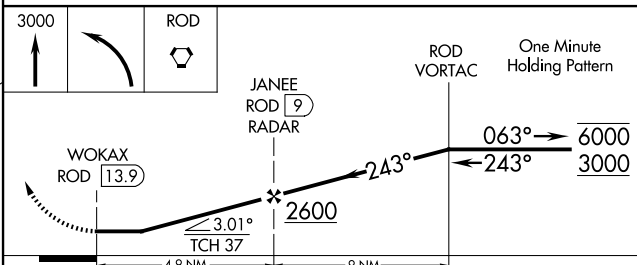
ELEV 993	TDZE 986
----------	----------



MIRL Rwy 8-26
REIL Rws 8 and 26

FAF to MAP 4.9 NM

Knots	60	90	120	150	180
Min:Sec	4:54	3:16	2:27	1:58	1:38



CATEGORY	A	B	C	D
S-26	1500-1	514 (600-1)	1500-1½	514 (600-1½)
<input checked="" type="checkbox"/> CIRCLING	1500-1 507 (600-1)	1560-1 567 (600-1)	1560-1½ 567 (600-1½)	1880-3 887 (900-3)

PIQUA, OHIO
Amdt 6E 20JUN19

40°10'N-84°19'W

PIQUA/HARTZELL FLD (I17)
VOR RWY 26