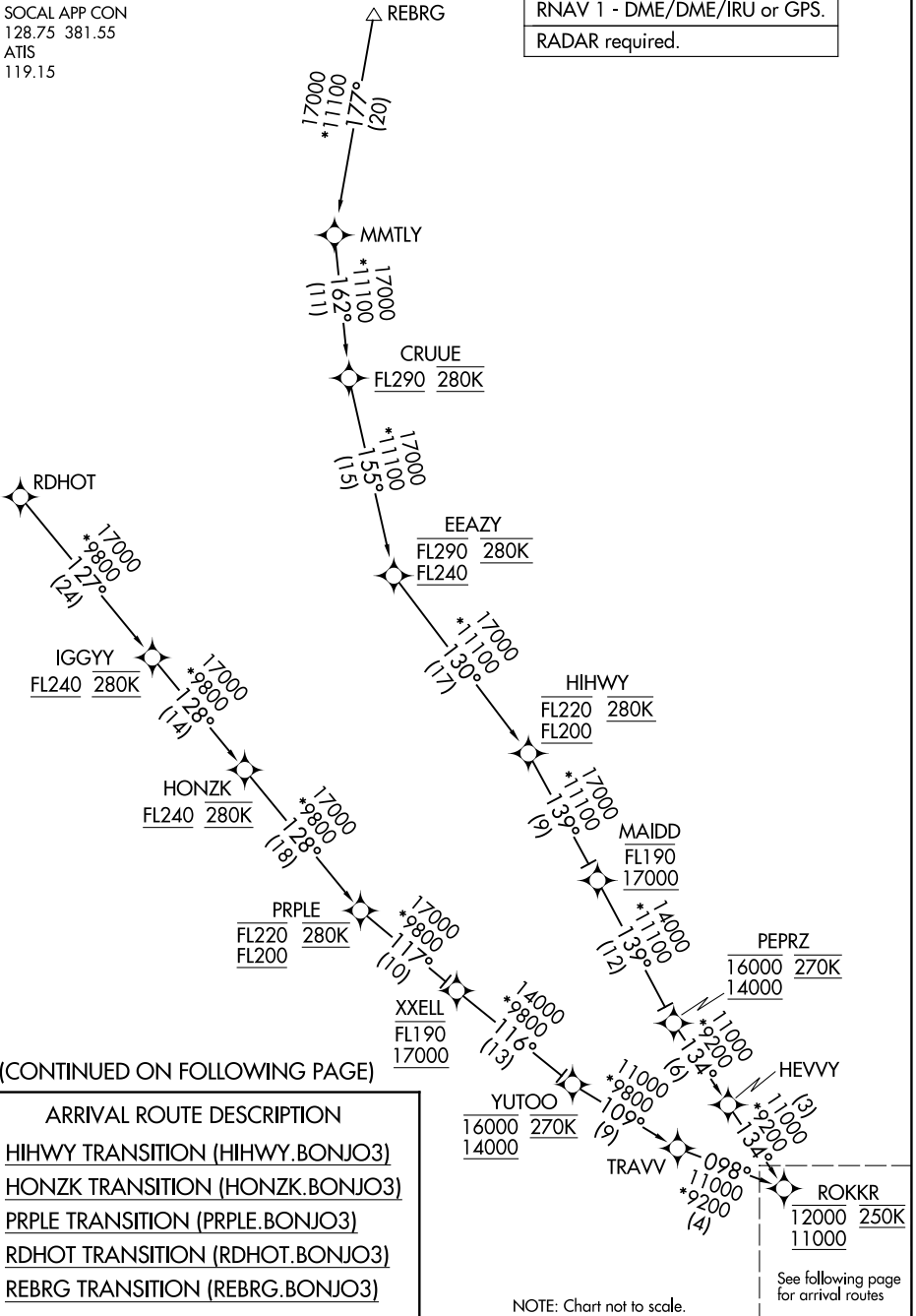


# BONJO THREE ARRIVAL (RNAV) Transition Routes

RNAV 1 - DME/DME/IRU or GPS.

RADAR required.

SOCAL APP CON  
128.75 381.55  
ATIS  
119.15



SW-3, 20 FEB 2025 to 20 MAR 2025

SW-3, 20 FEB 2025 to 20 MAR 2025

(ROKKR.BONJO3) 25051

AL-5023 (FAA)

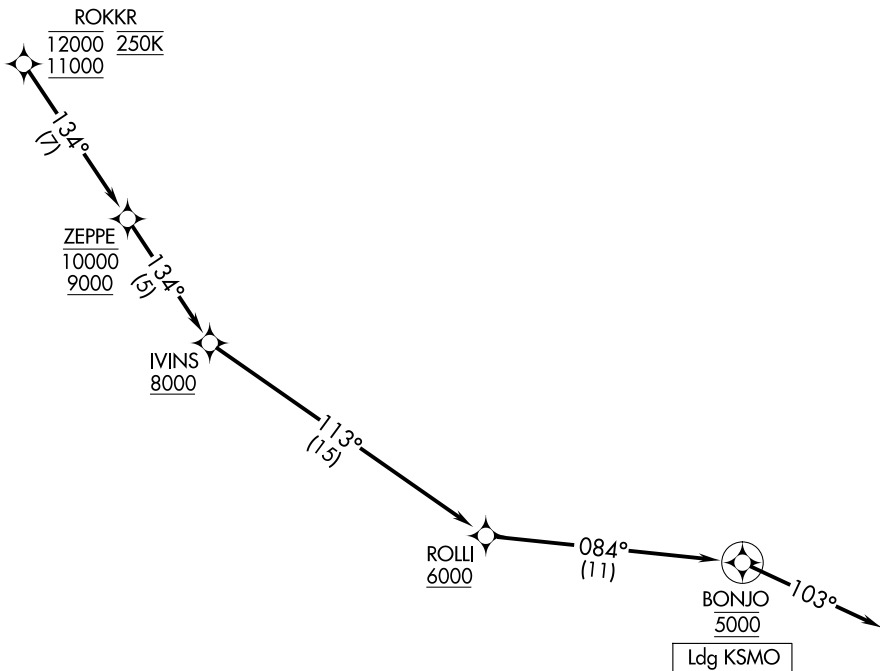
SANTA MONICA MUNI (SMO)  
SANTA MONICA, CALIFORNIA

# BONJO THREE ARRIVAL (RNAV) Arrival Routes

RNAV 1 - DME/DME/IRU or GPS.

RADAR required.

SOCAL APP CON  
128.75 381.55  
ATIS  
119.15



SW-3, 20 FEB 2025 to 20 MAR 2025

SW-3, 20 FEB 2025 to 20 MAR 2025

NOTE: Chart not to scale.

## ARRIVAL ROUTE DESCRIPTION

From ROKKR on track 134° to cross ZEPPE between 9000 and 10000, then on track 134° to cross IVINS at or above 8000, then on track 113° to cross ROLLI at or above 6000, then on track 084° to cross BONJO at 5000, then on track 103°. Expect RADAR vectors to final approach course.

**BONJO THREE ARRIVAL (RNAV) Arrival Routes**  
(ROKKR.BONJO3) 20FEB25

SANTA MONICA, CALIFORNIA  
SANTA MONICA MUNI (SMO)