

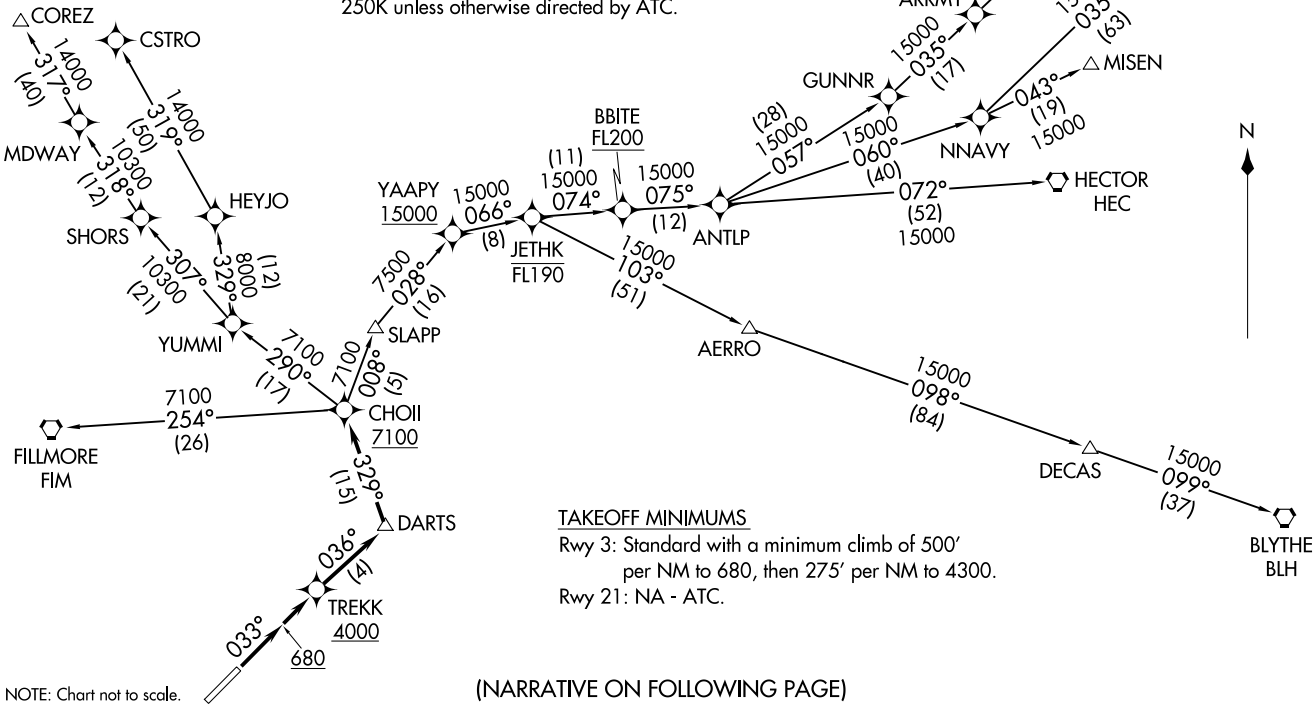
CHOII THREE DEPARTURE (RNAV)  
(CHOI13,CHOI1) 10SEP20

SANTA MONICA, CALIFORNIA  
SANTA MONICA MUNI (SMO)

ATIS  
119.15  
SANTA MONICA TOWER \*  
120.1 257.8  
SOCAL DEP CON  
135.05 317.5

NOTE: RNAV 1.  
NOTE: DME/DME/IRU or GPS required.  
NOTE: RADAR required.  
NOTE: Turbojet aircraft only.  
NOTE: MISEN transition restricted to aircraft landing Las Vegas terminal area.  
NOTE: HAILO transition ATC assigned only.  
NOTE: CSTRO, COREZ transitions: Maintain at or below 250K unless otherwise directed by ATC.

**TOP ALTITUDE:  
FL230**



TAKEOFF MINIMUMS

Rwy 3: Standard with a minimum climb of 500' per NM to 680, then 275' per NM to 4300.  
Rwy 21: NA - ATC.

(NARRATIVE ON FOLLOWING PAGE)

NOTE: Chart not to scale.

(CHOI13,CHOI1) 20254  
CHOII THREE DEPARTURE (RNAV)

AL-5023 (FAA)

SANTA MONICA MUNI (SMO)  
SANTA MONICA, CALIFORNIA



DEPARTURE ROUTE DESCRIPTION

TAKEOFF RUNWAY 3: Climb on heading 033° to 680, then direct to cross TREKK at or above 4000, then on track 036° to DARTS, then on track 329° to cross CHOI1 at or above 7100, thence. . . .

. . . .on assigned transition, maintain FL230. Expect filed altitude 10 minutes after departure.

BLYTHE TRANSITION (CHOI13.BLH)

COREZ TRANSITION (CHOI13.COREZ)

CSTRO TRANSITION (CHOI13.CSTRO)

FILLMORE TRANSITION (CHOI13.FIM)

HAILO TRANSITION (CHOI13.HAILO)

HECTOR TRANSITION (CHOI13.HEC)

LAS VEGAS TRANSITION (CHOI13.LAS)

MISEN TRANSITION (CHOI13.MISEN)

SW-3, 20 FEB 2025 to 20 MAR 2025

SW-3, 20 FEB 2025 to 20 MAR 2025