

PEVEE SIX DEPARTURE (RNAV)
(PEVEE6, PEVEE) 01FEB18

SANTA MONICA, CALIFORNIA
SANTA MONICA MUNI (SMO)

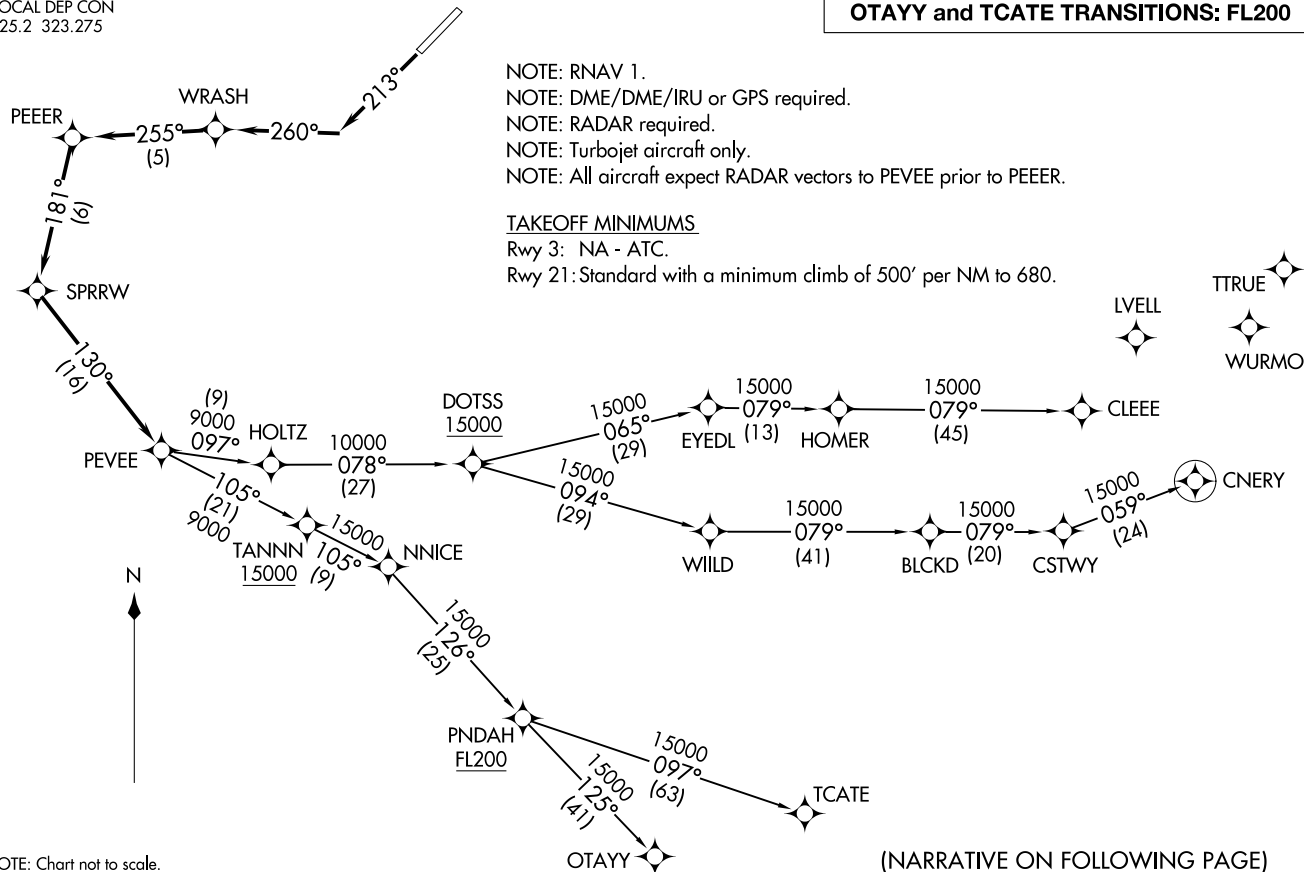
SANTA MONICA TOWER ★
120.1 257.8
SOCAL DEP CON
125.2 323.275

TOP ALTITUDE:
CLEEE and CNERY TRANSITIONS: 17000;
OTAYY and TCATE TRANSITIONS: FL200

NOTE: RNAV 1.
NOTE: DME/DME/IRU or GPS required.
NOTE: RADAR required.
NOTE: Turbojet aircraft only.
NOTE: All aircraft expect RADAR vectors to PEVEE prior to PEEER.

TAKEOFF MINIMUMS

Rwy 3: NA - ATC.
Rwy 21: Standard with a minimum climb of 500' per NM to 680.



(PEVEE6, PEVEE) 18032
PEVEE SIX DEPARTURE (RNAV)

AL-5023 (FAA)

SANTA MONICA MUNI (SMO)
SANTA MONICA, CALIFORNIA

NOTE: Chart not to scale.

(NARRATIVE ON FOLLOWING PAGE)



DEPARTURE ROUTE DESCRIPTION

TAKEOFF RUNWAY 21: Climb on heading 213° to intercept course 260° to WRASH, then on track 255° to PEEER, then on track 181° to SPRRW, then on track 130° to PEVEE, thence. . . .

. . . .on assigned transitions CLEEE and CNERV maintain 17000, OTAYY and TCATE transitions maintain FL200, expect filed altitude 10 minutes after departure.

LOST COMMUNICATIONS: In the event of lost communications, proceed via assigned transition.

CLEEE TRANSITION (PEVEE6.CLEEE)

CNERV TRANSITION (PEVEE6.CNERV)

OTAYY TRANSITION (PEVEE6.OTAYY)

TCATE TRANSITION (PEVEE6.TCATE)

SW-3, 20 FEB 2025 to 20 MAR 2025

SW-3, 20 FEB 2025 to 20 MAR 2025