

WAAS CH 90339 W21A	APP CRS 213°	Rwy ldg TDZE Apt Elev	3500 170 170
--	------------------------	-----------------------------	---

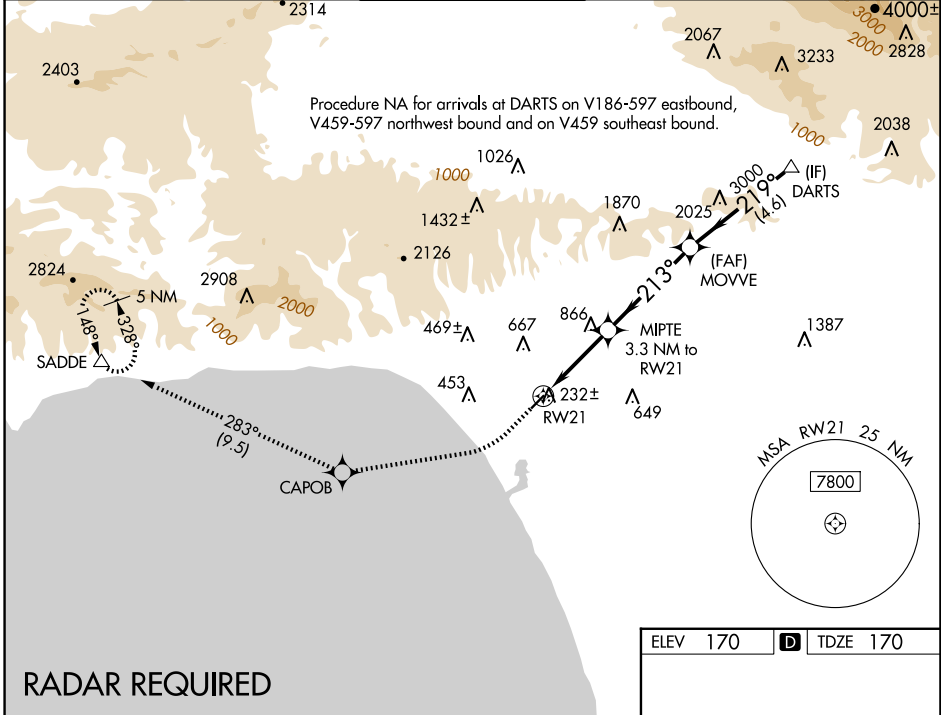
RNAV (GPS) RWY 21

SANTA MONICA MUNI (SMO)

RNP APCH.
 ▼ For uncompensated Baro-VNAV systems, LNAV/VNAV NA below 5°C (41°F) or above 14°C (58°F). Rwy 21 helicopter visibility reduction below 1 SM NA.
 ▲

MISSED APPROACH: Climb to 600 then climbing right turn to 5000 direct CAPOB and on track 283° to SADDE and hold, continue climb-in-hold to 5000.

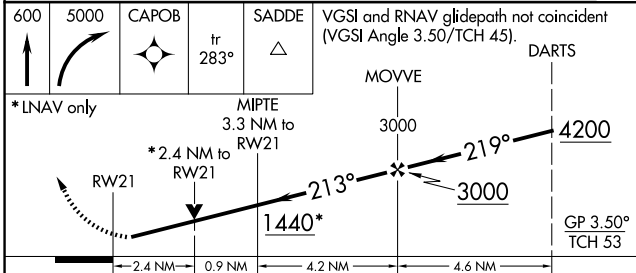
ATIS 119.15	SOCAL APP CON 135.05 317.5	SANTA MONICA TOWER * 120.1 (CTAF) 257.8	GND CON 121.9	UNICOM 122.95
-----------------------	--------------------------------------	--	-------------------------	-------------------------



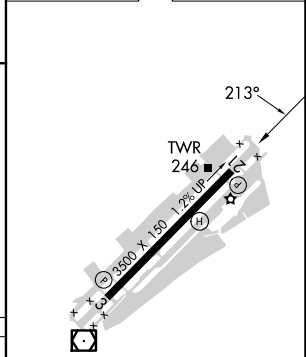
SW-3, 20 FEB 2025 to 20 MAR 2025

SW-3, 20 FEB 2025 to 20 MAR 2025

RADAR REQUIRED



ELEV 170	D	TDZE 170
----------	----------	----------



CATEGORY	A	B	C	D
LPV DA		440-1	270 (300-1)	
LNAV/VNAV DA		685-1 3/8	515 (600-1 3/8)	
LNAV MDA	1120-1 1/4	950 (1000-1 1/4)	1120-2 1/2	950 (1000-2 1/2)

MIRL Rwy 3-21 **1**
 REIL Rwy 21 **1**