

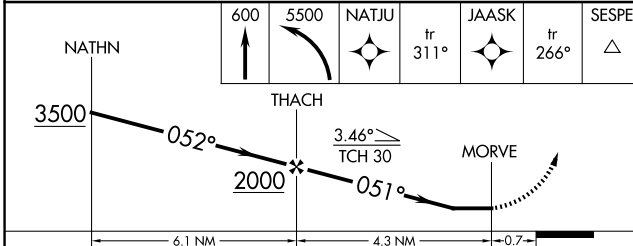
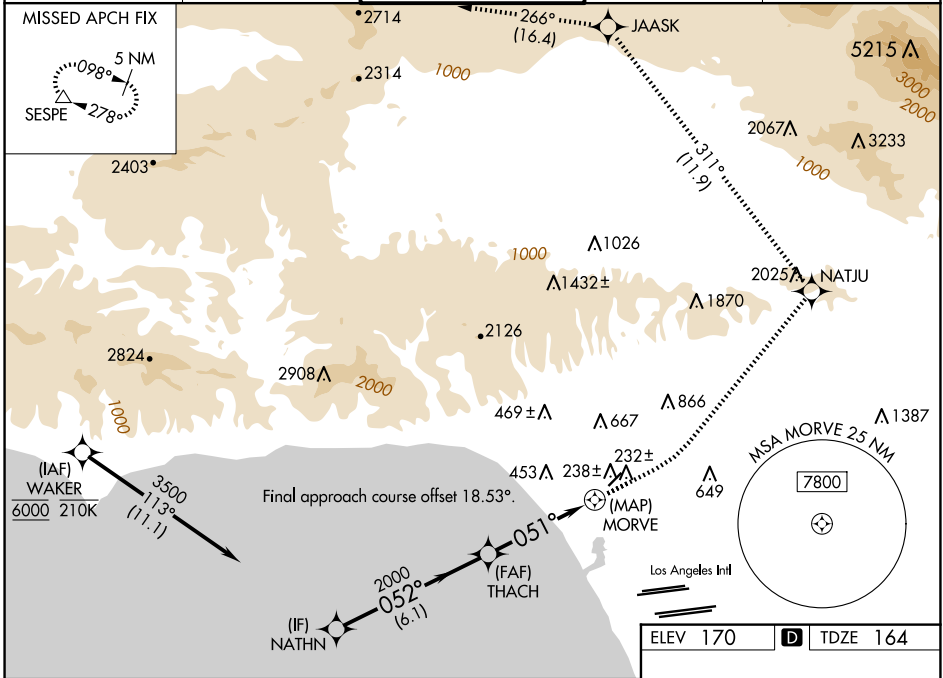
WAAS CH 50339 W03A	APP CRS 051°	Rwy Idg TDZE 164 Apt Elev 170	3500
--	------------------------	---	-------------

RNAV (GPS) Y RWY 3

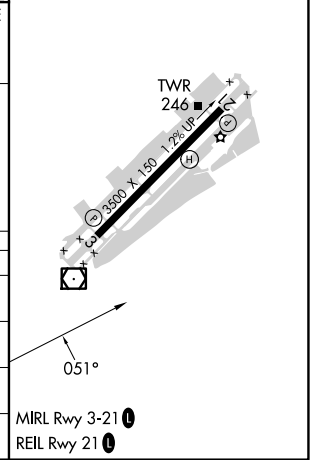
SANTA MONICA MUNI (SMO)

RNP APCH - GPS.		MISSED APPROACH: Climb to 600 then climbing left turn to 5500 direct NATJU and track 311° to JAASK and track 266° to SESPE and hold. *Missed approach requires minimum climb of 280 feet per NM to 2300.		
Rwy 3 helicopter visibility reduction below 3/4 SM NA.				

ATIS 119.15	SOCAL APP CON 135.05 317.5	SANTA MONICA TOWER * 120.1 (CTAF) 0 257.8	GND CON 121.9	UNICOM 122.95
-----------------------	--------------------------------------	---	-------------------------	-------------------------



ELEV 170	TDZE 164
----------	----------



CATEGORY	A	B	C	D
LP MDA*	480-1 316 (400-1)			
LNAV MDA*	500-1 336 (400-1)			
LP MDA	820-1 656 (700-1)		820-1 7/8 656 (700-1 7/8)	
LNAV MDA	1000-1 836 (900-1)	1000-1 1/4 836 (900-1 1/4)	1000-2 1/2 836 (900-2 1/2)	