

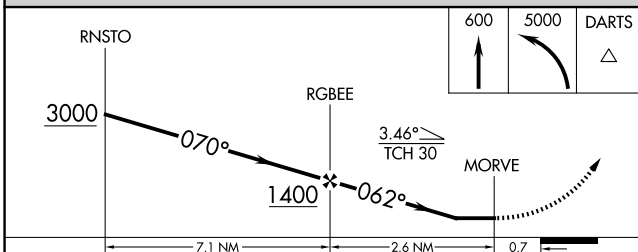
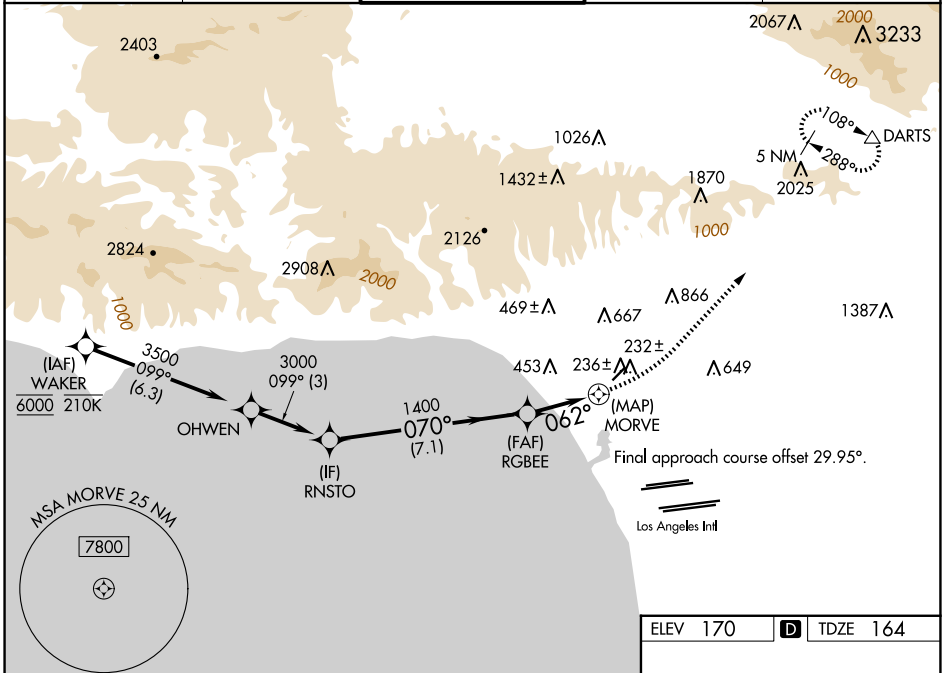
WAAS CH <b>77839</b> <b>W03B</b>	APP CRS <b>062°</b>	Rwy Idg TDZE <b>164</b> Apt Elev <b>170</b>	<b>3500</b>
----------------------------------------	------------------------	---------------------------------------------------	-------------

# RNAV (GPS) Z RWY 3

SANTA MONICA MUNI (SMO)

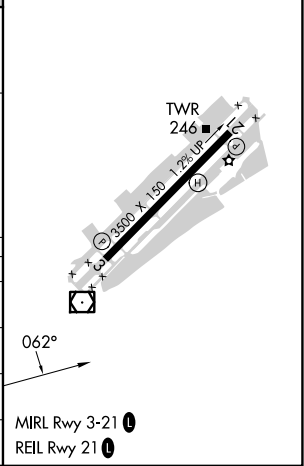
RNP APCH - GPS.		MISSED APPROACH: Climb to 600 then climbing left turn to 5000 direct DARTS and hold, do not exceed 175K when continuing climb-in-hold to 5000. *Missed approach requires minimum climb of 290 feet per NM to 3800.		
Rwy 3 helicopter visibility reduction below 3/4 SM NA.				

ATIS <b>119.15</b>	SOCAL APP CON <b>135.05 317.5</b>	SANTA MONICA TOWER * <b>120.1 (CTAF) 257.8</b>	GND CON <b>121.9</b>	UNICOM <b>122.95</b>
-----------------------	--------------------------------------	---------------------------------------------------	-------------------------	-------------------------



ELEV 170	TDZE 164
----------	----------

CATEGORY	A	B	C	D
LP MDA*	460-1	296 (300-1)		NA
LNAV MDA*	500-1	336 (400-1)		NA
LP MDA	1240-1½ 1076 (1100-1½)	1240-1½ 1076 (1100-1½)		NA
LNAV MDA	1360-1½ 1196 (1200-1½)	1360-1½ 1196 (1200-1½)		NA



SW-3, 20 FEB 2025 to 20 MAR 2025

SW-3, 20 FEB 2025 to 20 MAR 2025