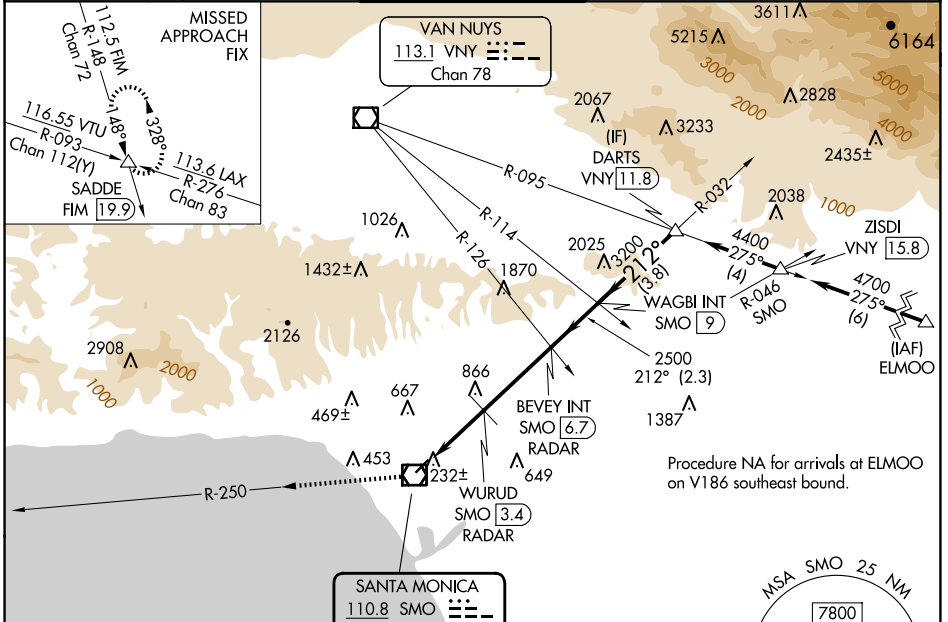


VOR/DME SMO 110.8 Chan 45	APP CRS 212°	Rwy Idg TDZE Apt Elev N/A N/A 170
--	------------------------	---

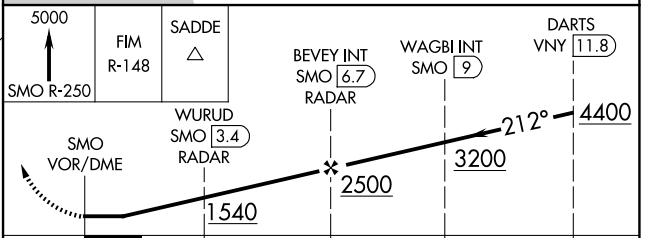
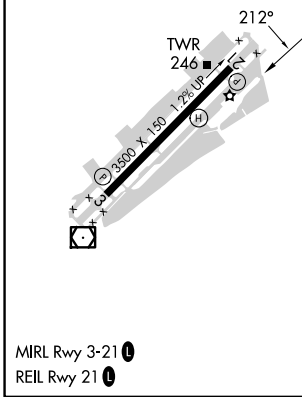
VOR-A
SANTA MONICA MUNI (SMO)

NA Circling NA northwest of Rwy 3-21.	MISSED APPROACH: Climb to 5000 on SMO VOR/DME R-250 and on FIM VORTAC R-148 to SADDE INT/19.9 DME and hold, continue climb-in-hold to 5000.
--	---

ATIS 119.15	SOCAL APP CON 135.05 317.5	SANTA MONICA TOWER * 120.1 (CTAF) 257.8	GND CON 121.9	UNICOM 122.95
-----------------------	--------------------------------------	--	-------------------------	-------------------------



ELEV 170	D
----------	----------



CATEGORY	A	B	C	D
C CIRCLING	1540-1¼ 1370 (1400-1¼)	1540-1½ 1370 (1400-1½)	1540-3	1370 (1400-3)
WURUD FIX MINIMUMS				
C CIRCLING	1120-1¼ 950 (1000-1¼)	1180-3	1010 (1100-3)	

SW-3, 20 FEB 2025 to 20 MAR 2025

SW-3, 20 FEB 2025 to 20 MAR 2025