

LOC/DME I-FFT 109.95	APP CRS 249°	Rwy Idg TDZE 790 Apt Elev 812
Chan 36 (Y)		

LOC RWY 25

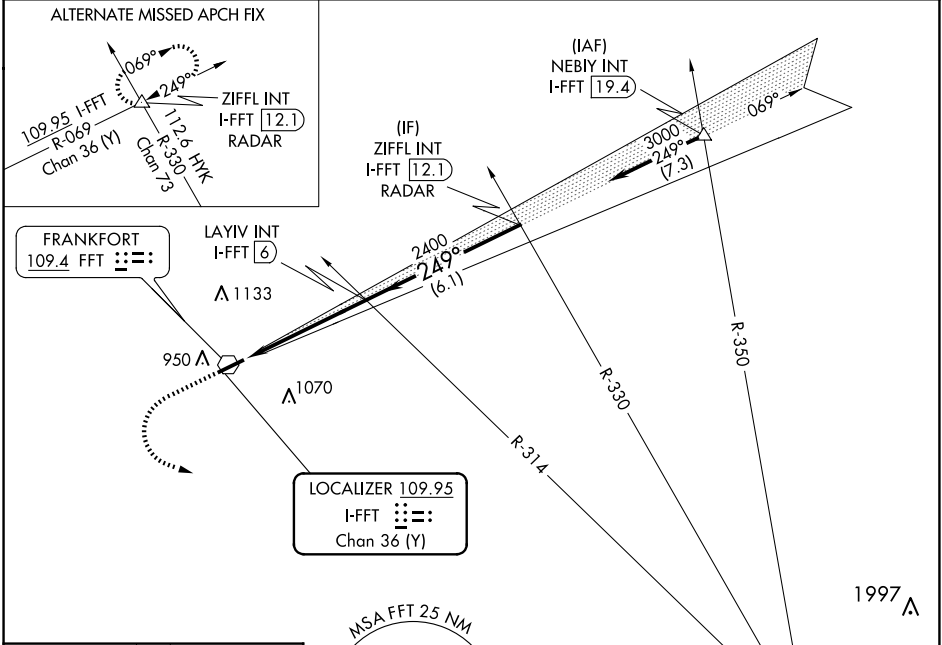
CAPITAL CITY (F'F'T)

▼ Rwy 25 helicopter visibility reduction below 3/4 SM NA. When local altimeter setting not received, use Lexington altimeter setting and increase all MDA 80 feet. Increase S-25 Cats C/D visibility to 1 1/2 mile and Circling Cat C and D visibility 1/4 mile.

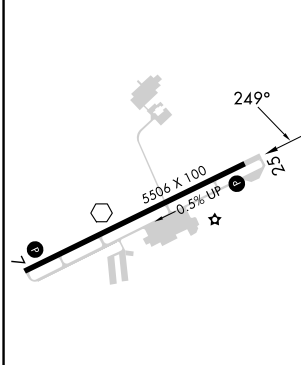
▲ NA

MISSED APPROACH: Climb to 3100 then left turn direct HYK VOR/DME and hold.

ASOS 119.275	LEXINGTON APP CON 120.75 298.9	CLNC DEL 118.65	UNICOM 122.8 (CTAF) 0
------------------------	--	---------------------------	---------------------------------



ELEV 812	TDZE 790
----------	----------

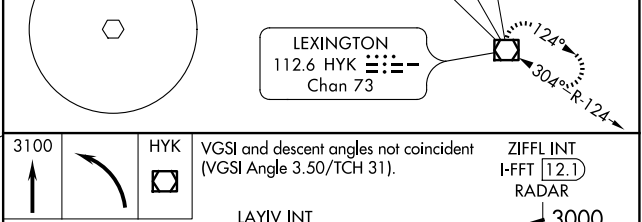


MIRL Rwy 7-25 0

REIL Rwys 7 and 25 0

FAF to MAP 4.9 NM

Knots	60	90	120	150	180
Min:Sec	4:54	3:16	2:27	1:58	1:38



CATEGORY	A	B	C	D
S-25	1280-1 490 (500-1)		1280-1 490 (500-1)	
C CIRCLING	1280-1 468 (500-1)	1380-1 568 (600-1)	1440-1 628 (700-1 3/4)	1440-2 628 (700-2)

SE-1, 20 FEB 2025 to 20 MAR 2025

SE-1, 20 FEB 2025 to 20 MAR 2025