

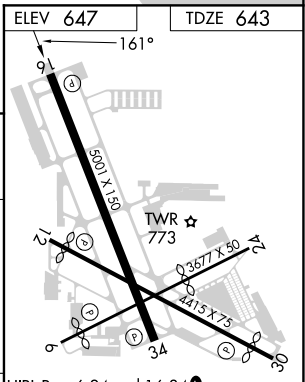
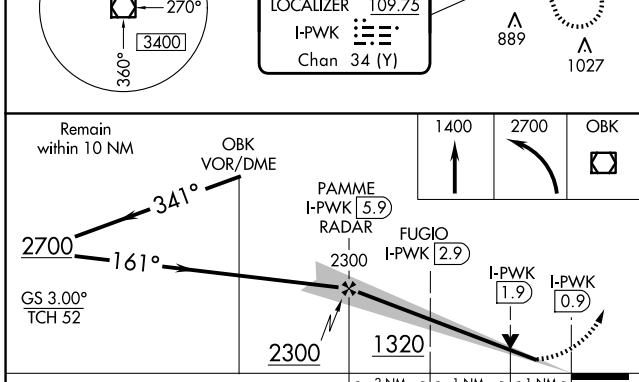
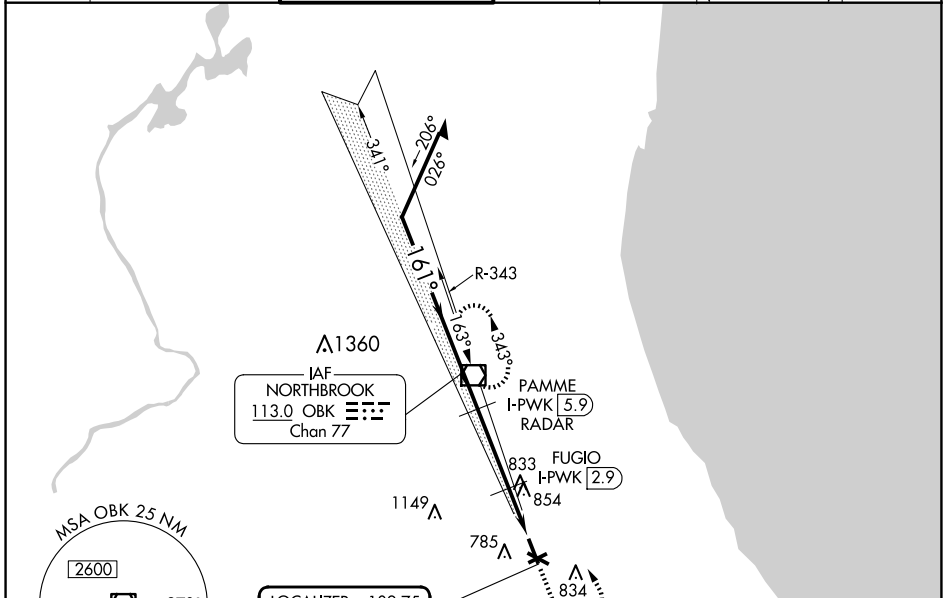
LOC/DME I-PWK 109.75 Chan 34 (Y)	APP CRS 161°	Rwy Idg TDZE Apt Elev	5001 643 647
--	------------------------	-----------------------------	---

ILS or LOC RWY 16

CHICAGO EXEC (PWK)

DME required.		MISSED APPROACH: Climb to 1400 then climbing left turn to 2700 direct OBK VOR/DME and hold, continue climb-in-hold to 2700.				
<p>⚠ Circling Rwy 6, 12, 24, 30 NA at night. Rwy 16 helicopter visibility reduction below 3/4 SM NA.</p>						

ATIS 124.2	CHICAGO APP CON 120.55 306.925	EXECUTIVE TOWER ★ 119.9 (CTAF) 0	GND CON 121.7	CLNC DEL 124.7	CLNC DEL 124.7 (When twr closed)	UNICOM 122.95
----------------------	--	---	-------------------------	--------------------------	---	-------------------------



CATEGORY	A	B	C	D	HIRL Rwy 6-24 and 16-34 0 MIRL Rwy 12-30 0 REIL Rwy 12 and 30 REIL Rwy 16 and 34 0 RLLS Rwy 16 0 FAF to MAP 5 NM
S-ILS 16		927-7/8	284 (300-7/8)		
S-LOC 16		1020-1	377 (400-1)		
C CIRCLING	1140-1 493 (500-1)	1160-1 513 (600-1)	1200-1½ 553 (600-2)	1460-2¾ 813 (900-2¾)	Knots: 60 90 120 150 180 Min:Sec: 5:00 3:20 2:30 2:00 1:40

EC-3, 20 FEB 2025 to 20 MAR 2025

EC-3, 20 FEB 2025 to 20 MAR 2025